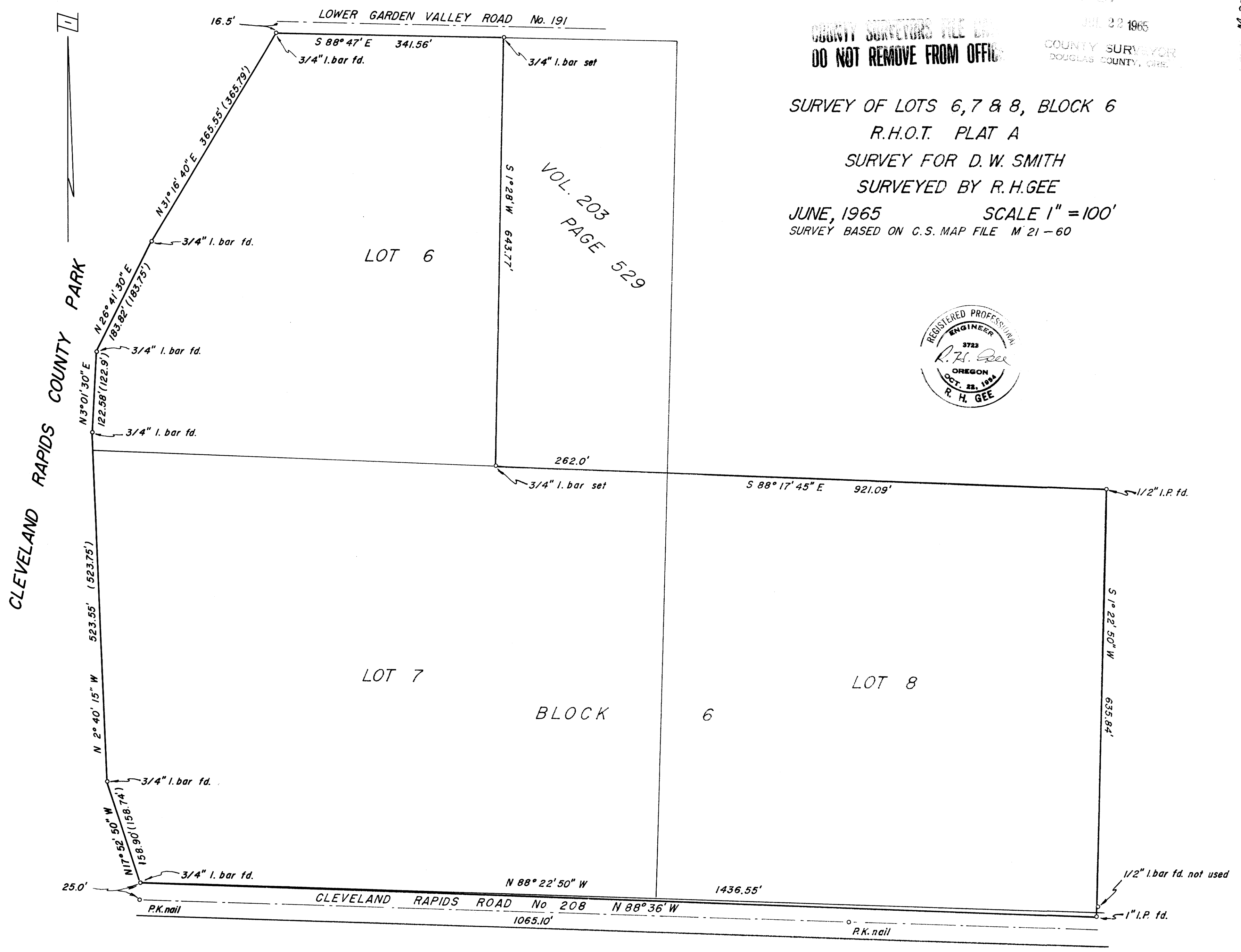
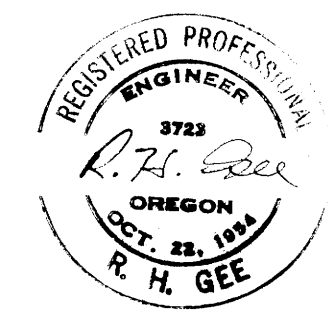


FILED  
RECORDED  
JUL 22 1965  
COUNTY SURVEYOR  
DOUGLAS COUNTY, ORE.

COUNTY SURVEYORS FILE LAW  
DO NOT REMOVE FROM OFFICE

SURVEY OF LOTS 6, 7 & 8, BLOCK 6  
R.H.O.T. PLAT A  
SURVEY FOR D.W. SMITH  
SURVEYED BY R.H.GEE  
JUNE, 1965 SCALE 1" = 100'  
SURVEY BASED ON C.S. MAP FILE M 21-60

VOL. 203  
PAGE 529



M 30 - 20

M 30 - 20