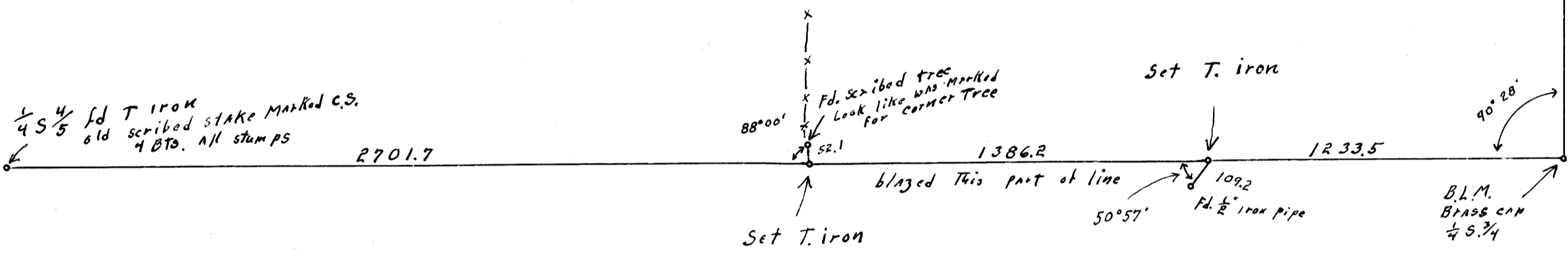


B.L.M. Brass cap
1/4 S. 3/4

The T. irons set on This survey are not corners



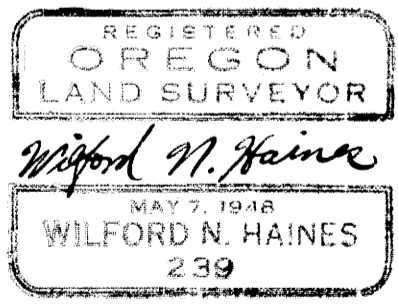
East & West Center Line SECT. 4, T.23 S., R.4 W. W.M.

for

D.M. Fullbright you call, Oregon.

July 12, 1965

Scale: 1" = 400'



FILED
RECEIVED

JUL 16 1965

COUNTY SURVEYOR
DOUGLAS COUNTY, ORE.

COPIES SURVEYORS FILE
DO NOT REMOVE FROM FILE