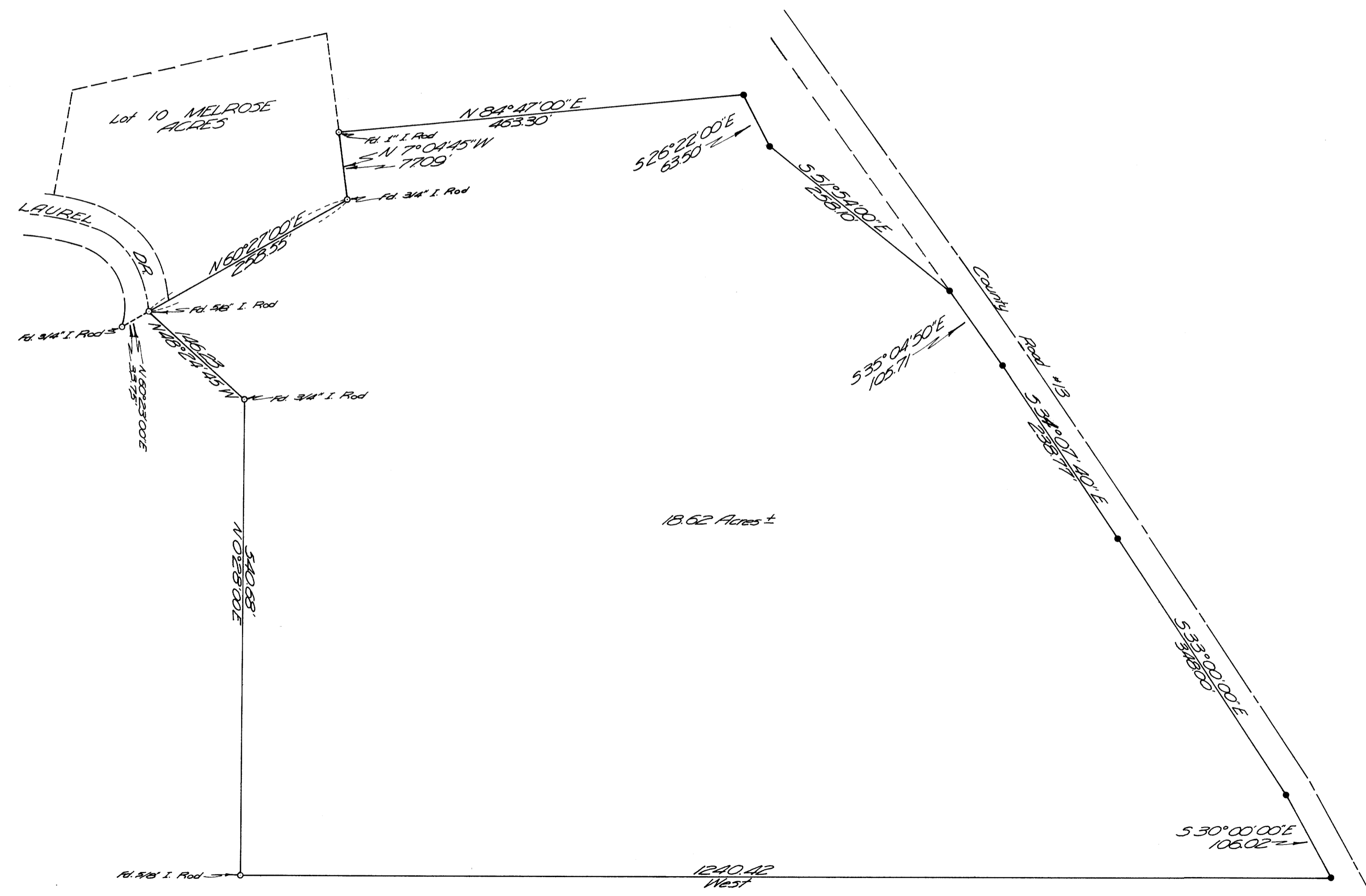


COUNTY SURVEYORS FILE DATA
DO NOT REMOVE FROM OFFICE

SURVEY TO ESTABLISH PROPERTY CORNERS
IN WM. MCKINNEY D.L.C. NO. 50
SEC. 9 T.27S. R.6W. W.M.
SURVEYED FOR DON LEWIS 7-3-65
SURVEYED BY DON GARRETT SCALE 1"=100'
BEARINGS BASED ON WEST LINE OF MELROSE ACRES S 0°28'00"W VOL. 12 PG. 12
•--DENOTES SET 5/8" IRON ROD

REGISTERED
OREGON
LAND SURVEYOR
Don E. Garrett
JULY 14, 1961
DON E. GARRETT
544



FILED *LG*
RECEIVED
JUL 15 1965
COUNTY SURVEYOR
DOUGLAS COUNTY, ORE.

FILE M 307-12

FILE M 307-12