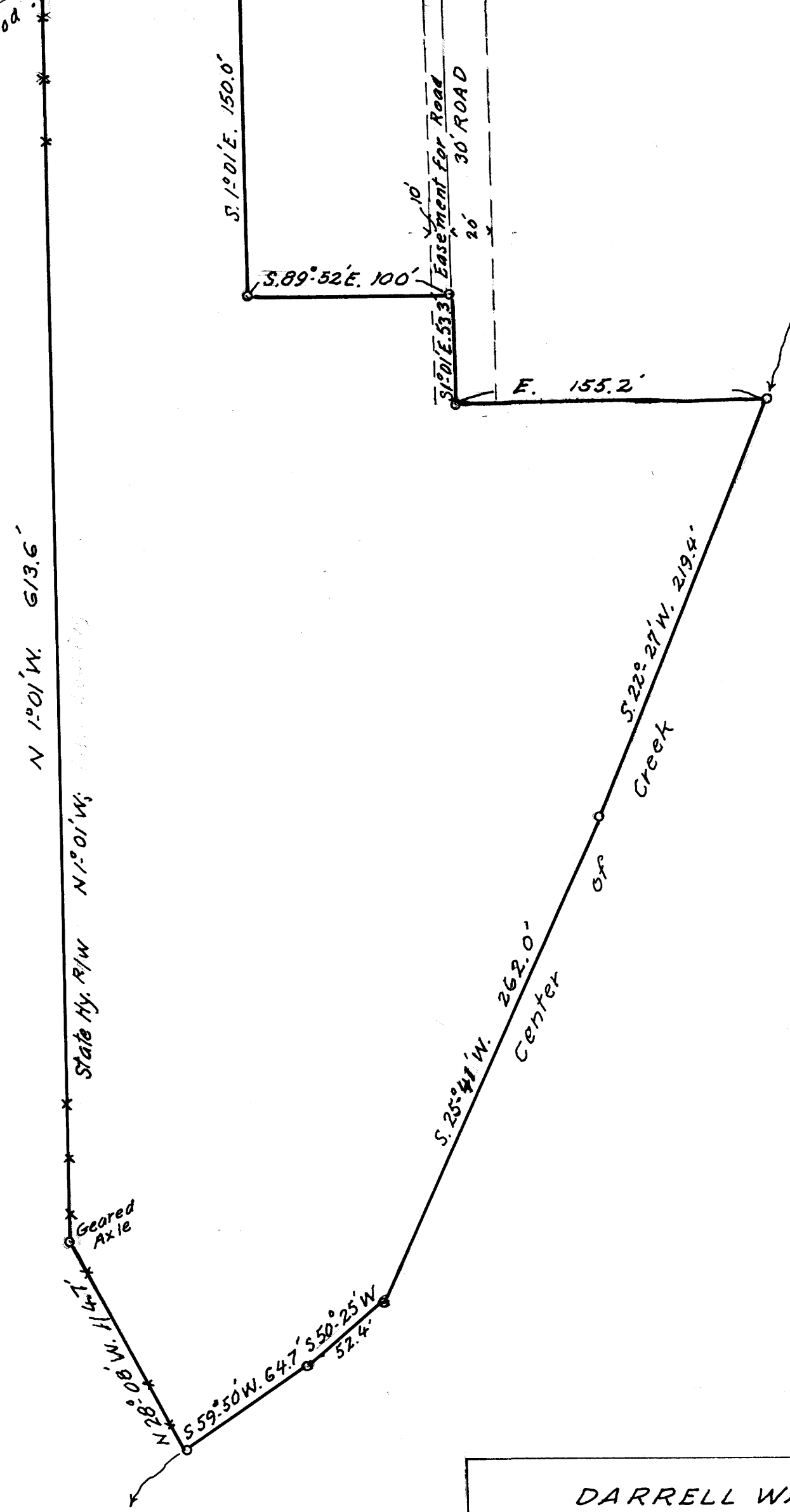


Center County Road c/c Pippindale Subdivision Plat
 NE Cor Lot 9, Boggs Orch Trs
 S. 89° 52' E. 660'

5/8" Bar, ref. pt. to NW Cor. Lot 11
 Cen. Co. Rd
 NW Cor. Lot 11, Boggs Orch. Tr.
 State Hy Fence Cor
 S. 89° 52' E. 99.7' - base bearing
 3/4" pipe



FILED
 RECEIVED
 JUL 8 1965
 COUNTY SURVEYOR
 DOUGLAS COUNTY, ORE

DARRELL WADE TO GLEN CARLSON
 IN LOT 11, BOGGS ORCHARD TRACTS
 T28S; R6W; W.M.; DOUGLAS COUNTY, ORE
 JUNE 1965 1" = 60 FT.

COUNTY SURVEYORS FILE
 DO NOT REMOVE FROM OFFICE

FILE M 30 7 10

M 30 7 10