

FILED *LL*
RECEIVED

MAY 21 1965

COUNTY SURVEYOR
DOUGLAS COUNTY, ORE.

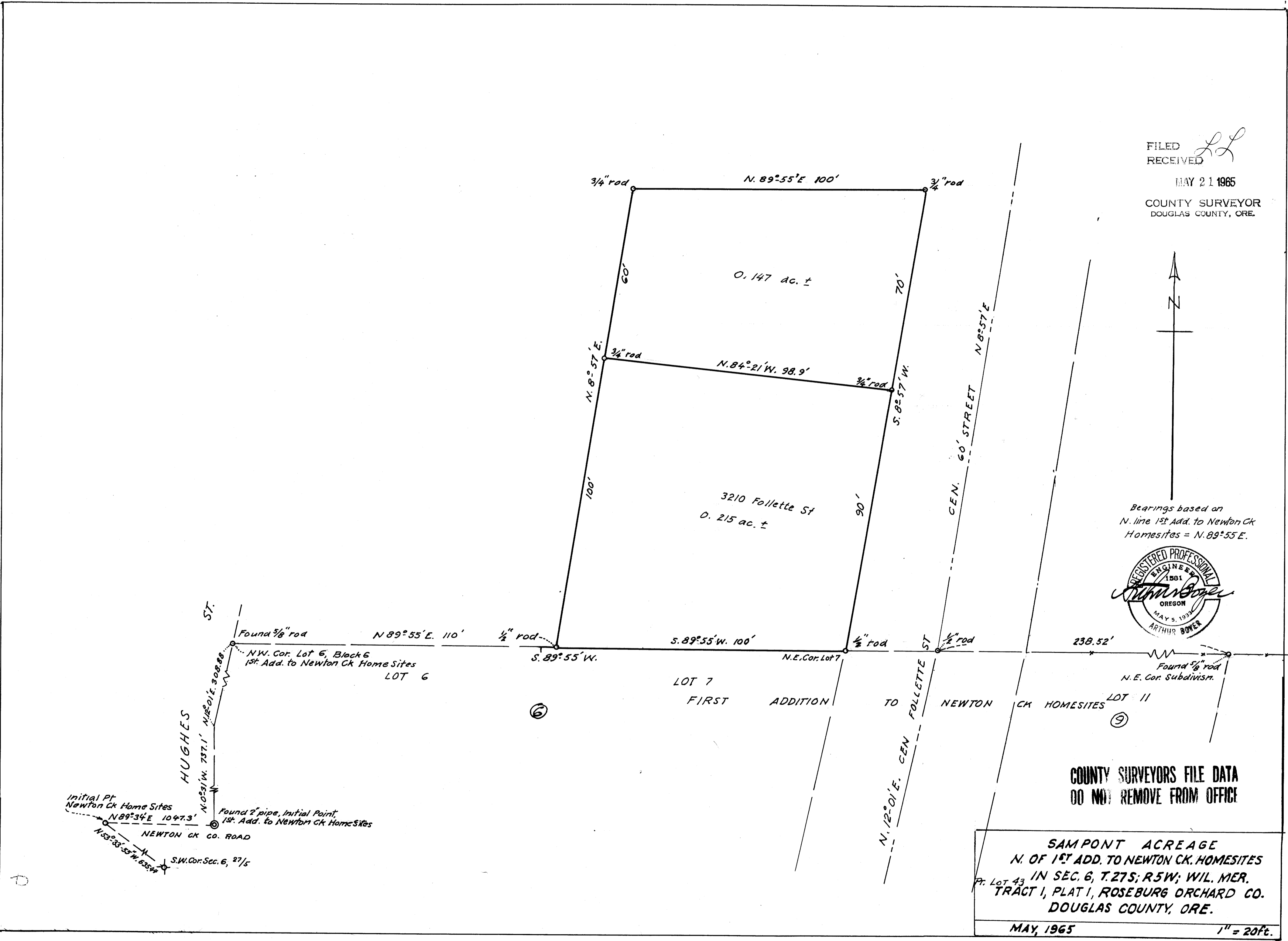


Bearings based on
N. line 1st Add. to Newton Ck
Homesites = N. 89° 55' E.



COUNTY SURVEYORS FILE DATA
DO NOT REMOVE FROM OFFICE

SAMPONT ACREAGE
N. OF 1ST ADD. TO NEWTON CK. HOMESITES
IN SEC. 6, T. 27S; R. 5W; WIL. MER.
TRACT 1, PLAT 1, ROSEBURG ORCHARD CO.
DOUGLAS COUNTY, ORE.
MAY, 1965 1" = 20ft.



M 29-62