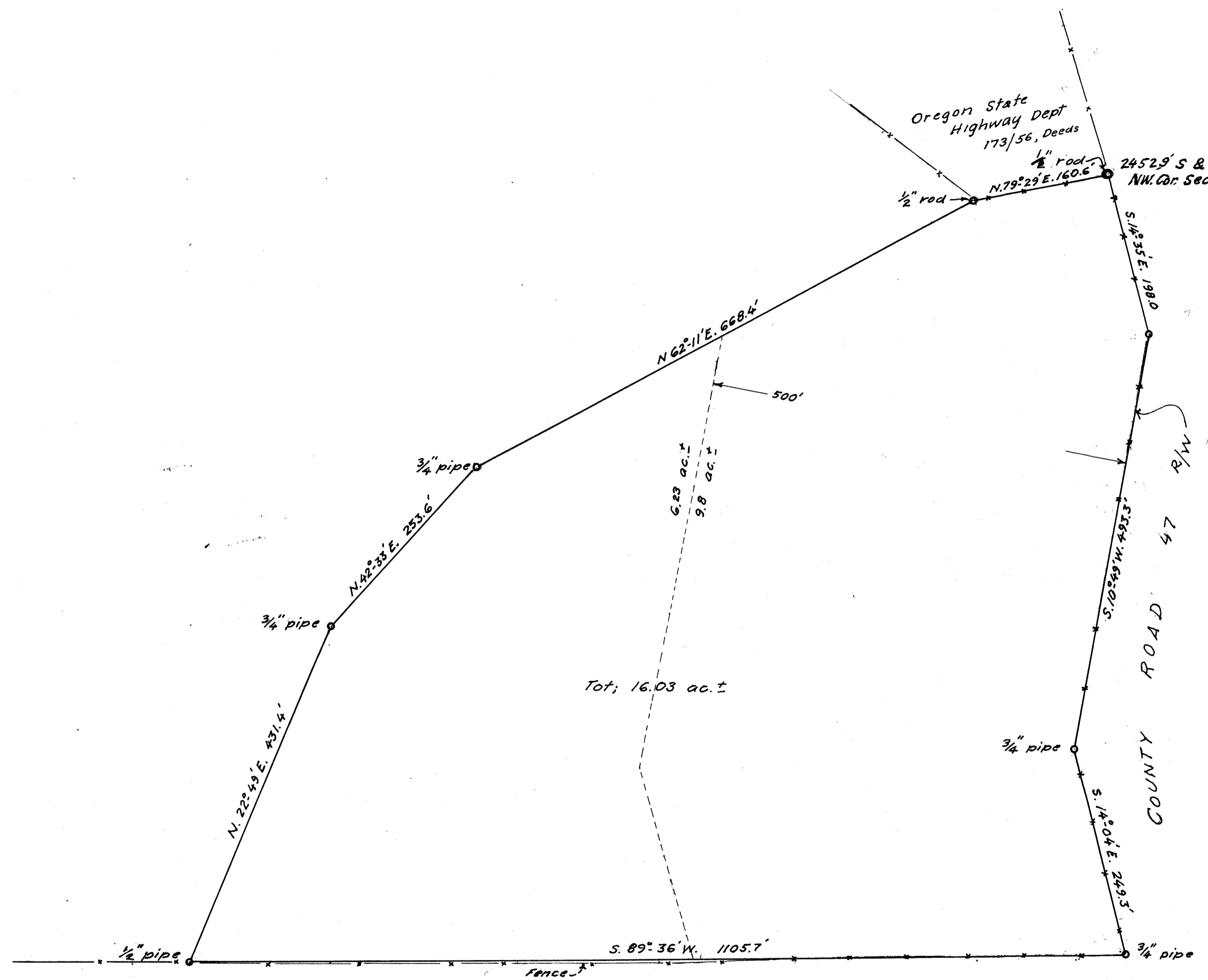
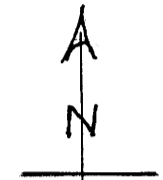


MAP FILE M 229-66-1

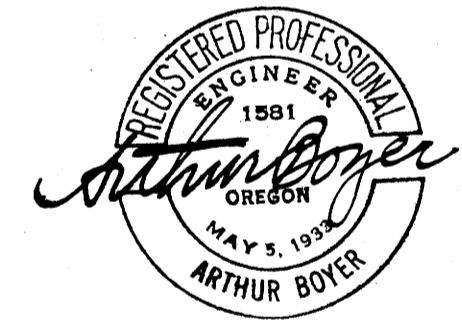


Oregon State Highway Dept
173/56, Deeds

2452.9' S & 951.3' E. of
NW. Cor. Sec. 29, T.28S; R.6W; W.M.



Bearings based on
S. line 173/56 - N 79° 29' E.



FILED
RECEIVED

MAY 19 1965

COUNTY SURVEYOR
DOUGLAS COUNTY, ORE.

COUNTY SURVEYORS FILE DATA
DO NOT REMOVE FROM OFFICE

NICHOLS BROS.	
ACREAGE IN JOS. GAGE DON. LND. CLM. 51, SEC. 29, T.28S; R.6W; W.M.; DOUGLAS COUNTY, ORE.	
May 1965	1" = 100 ft.

MAP FILE M 229-66-1