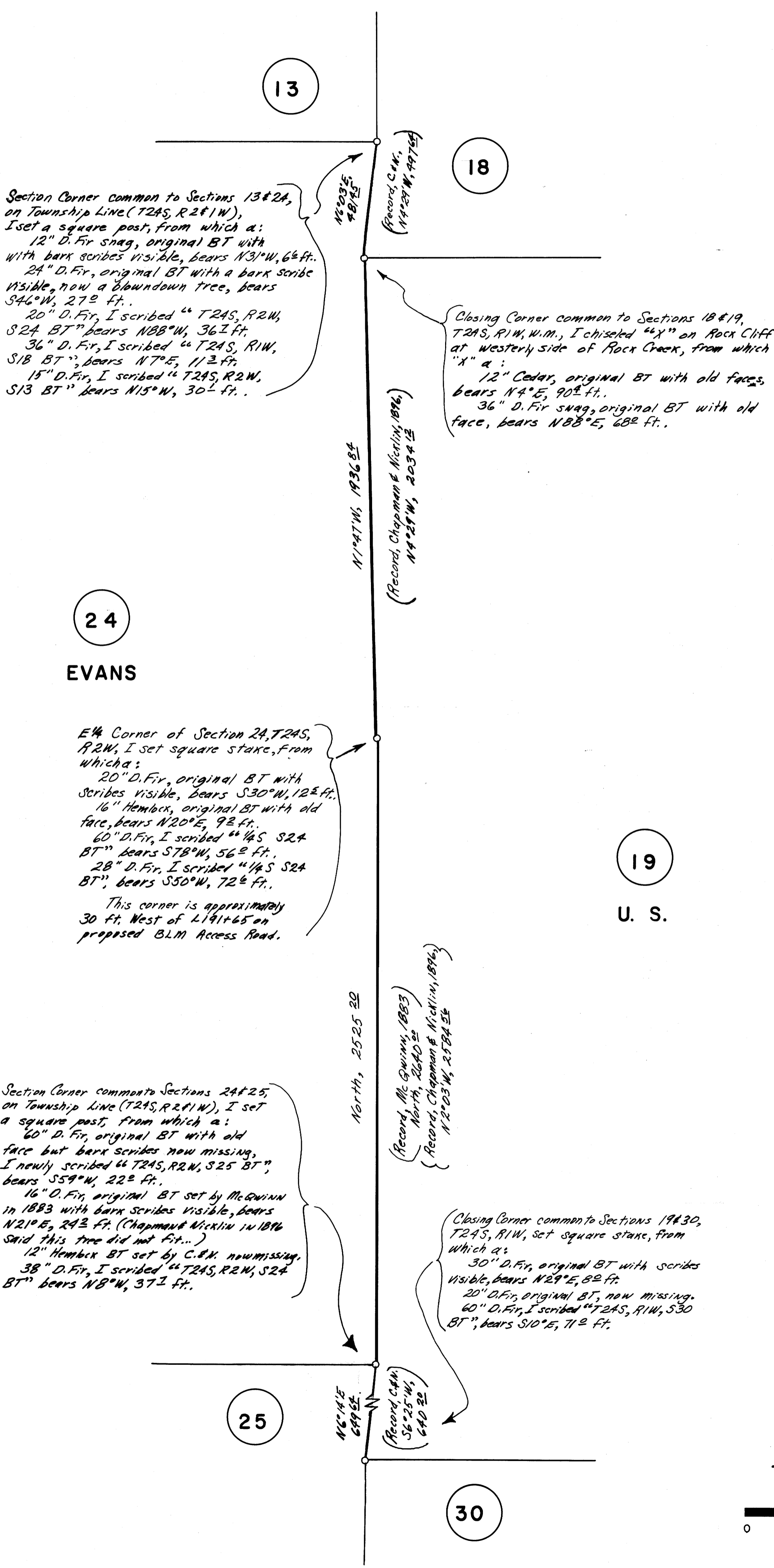


PROPERTY LINE SURVEY FOR EVANS PRODUCTS COMPANY between Section 24, T24S,
 COUNTY SURVEYORS FILE NO. DO NOT REMOVE FROM OFFICE R2W, & Section 19, T24S, R1W, W. M., ORE.



Section Corner common to Sections 13 & 24, on Township Line (T24S, R2 & 1W), I set a square post, from which a:
 12" D. Fir snag, original BT with bark scribes visible, bears N31°W, 6 1/2 ft.
 24" D. Fir, original BT with a bark scribe visible, now a blowdown tree, bears S46°W, 27 1/2 ft.
 20" D. Fir, I scribed "T24S, R2W, S24 BT" bears N88°W, 36 1/2 ft.
 36" D. Fir, I scribed "T24S, R1W, S18 BT", bears N7°E, 11 1/2 ft.
 15" D. Fir, I scribed "T24S, R2W, S13 BT" bears N15°W, 30 1/2 ft.

Closing Corner common to Sections 18 & 19, T24S, R1W, W.M., I chiseled "X" on Rock Cliff at westerly side of Rock Creek, from which "X" a:
 12" Cedar, original BT with old faces, bears N4°E, 90 1/2 ft.
 36" D. Fir snag, original BT with old face, bears N88°E, 68 1/2 ft.

24
 EVANS

E 1/4 Corner of Section 24, T24S, R2W, I set square stake, from which a:
 20" D. Fir, original BT with scribes visible, bears S30°W, 12 1/2 ft.
 16" Hemlock, original BT with old face, bears N20°E, 9 1/2 ft.
 60" D. Fir, I scribed "1/4 S S24 BT" bears S78°W, 56 1/2 ft.
 28" D. Fir, I scribed "1/4 S S24 BT", bears S30°W, 72 1/2 ft.
 This corner is approximately 30 ft. West of L191+65 on proposed BLM Access Road.

Section Corner common to Sections 24 & 25, on Township Line (T24S, R2 & 1W), I set a square post, from which a:
 60" D. Fir, original BT with old face but bark scribes now missing, I newly scribed "T24S, R2W, S25 BT", bears S59°W, 22 1/2 ft.
 16" D. Fir, original BT set by McQuinn in 1883 with bark scribes visible, bears N21°E, 24 1/2 ft. (Chapman & Nicklin in 1896 said this tree did not fit...)
 12" Hemlock BT set by C. & N. now missing.
 38" D. Fir, I scribed "T24S, R2W, S24 BT" bears N8°W, 37 1/2 ft.

Closing Corner common to Sections 19 & 30, T24S, R1W, set square stake, from which a:
 30" D. Fir, original BT with scribes visible, bears N29°E, 82 ft.
 20" D. Fir, original BT, now missing.
 60" D. Fir, I scribed "T24S, R1W, S30 BT", bears S10°E, 71 1/2 ft.

Bearings based on McQuinn's 1883 Record of Line between SE Corner Section 24 & E 1/4 Corner of Section 24.

REGISTERED
 OREGON
 LAND SURVEYOR

Bruce A. Shaner
 OCT. 4, 1957
 Bruce A. Shaner
 430

FILED
 RECEIVED

MAY 18 1965

COUNTY SURVEYOR
 DOUGLAS COUNTY, ORE.

LEGEND
 ○ CORNER FOUND
 — PROPERTY LINE, BLAZED & PAINTED RED

0 300 600 900
 Scale: 1 inch = 300 feet

Surveyed April & May, 1965