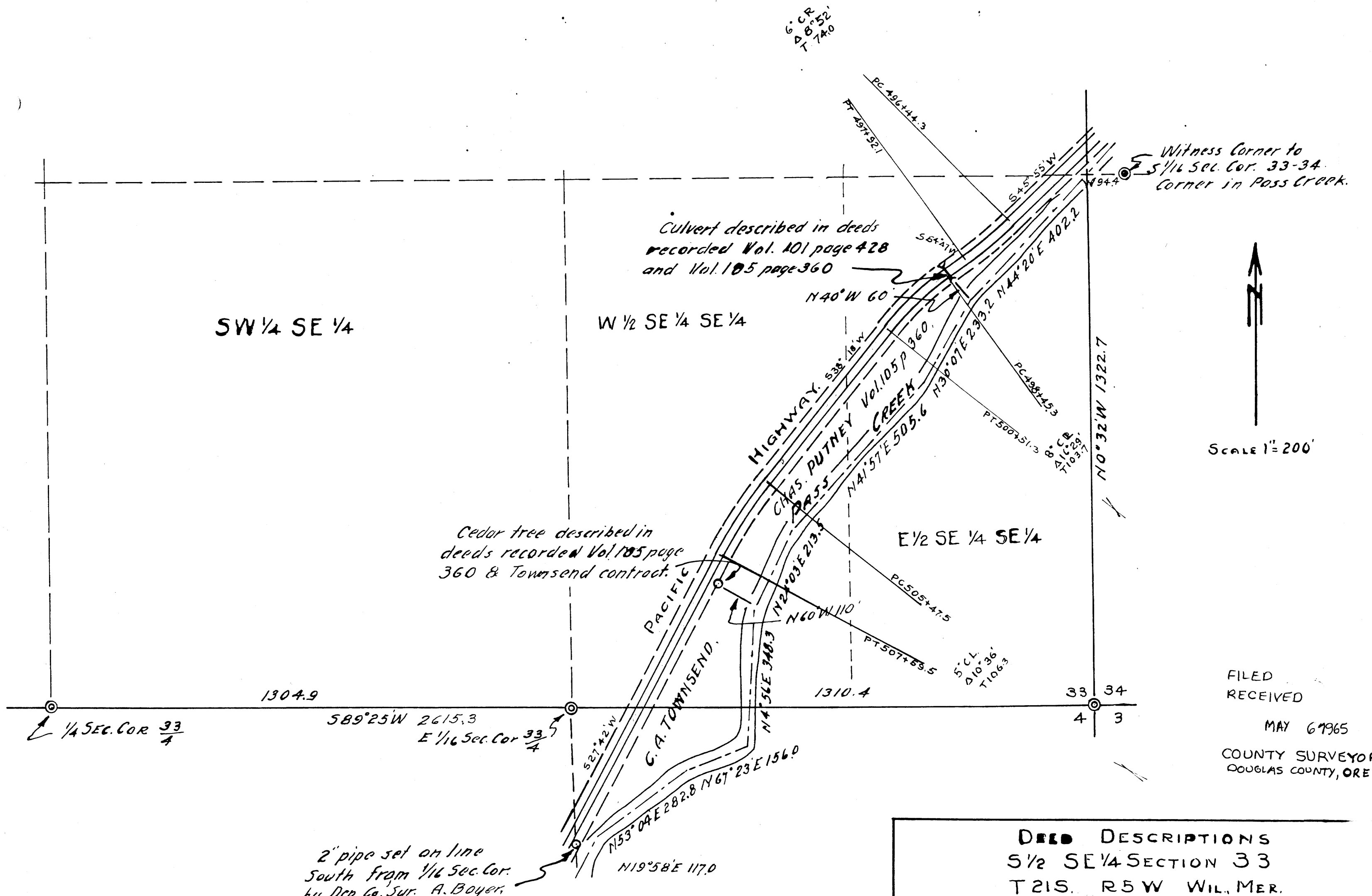


89-67 44  
85-53-85



Scale 1" = 200'

FILED  
RECEIVED  
MAY 6 1965  
COUNTY SURVEYOR  
DOUGLAS COUNTY, ORE.

**DEED DESCRIPTIONS**  
S 1/2 SE 1/4 SECTION 33  
T 21S. R 5W WIL. MER.

**BEN. B. IRVING**  
Civil Engineer & Surveyor  
ROSEBURG OREGON  
SEPT 28-29 1944.

THIS COPY MADE FROM  
A XEROX 2510  
DATE July 28, 89

COUNTY SURVEYORS FILE DATA  
DO NOT REMOVE FROM OFFICE

C.S. 53-85  
M 29-63