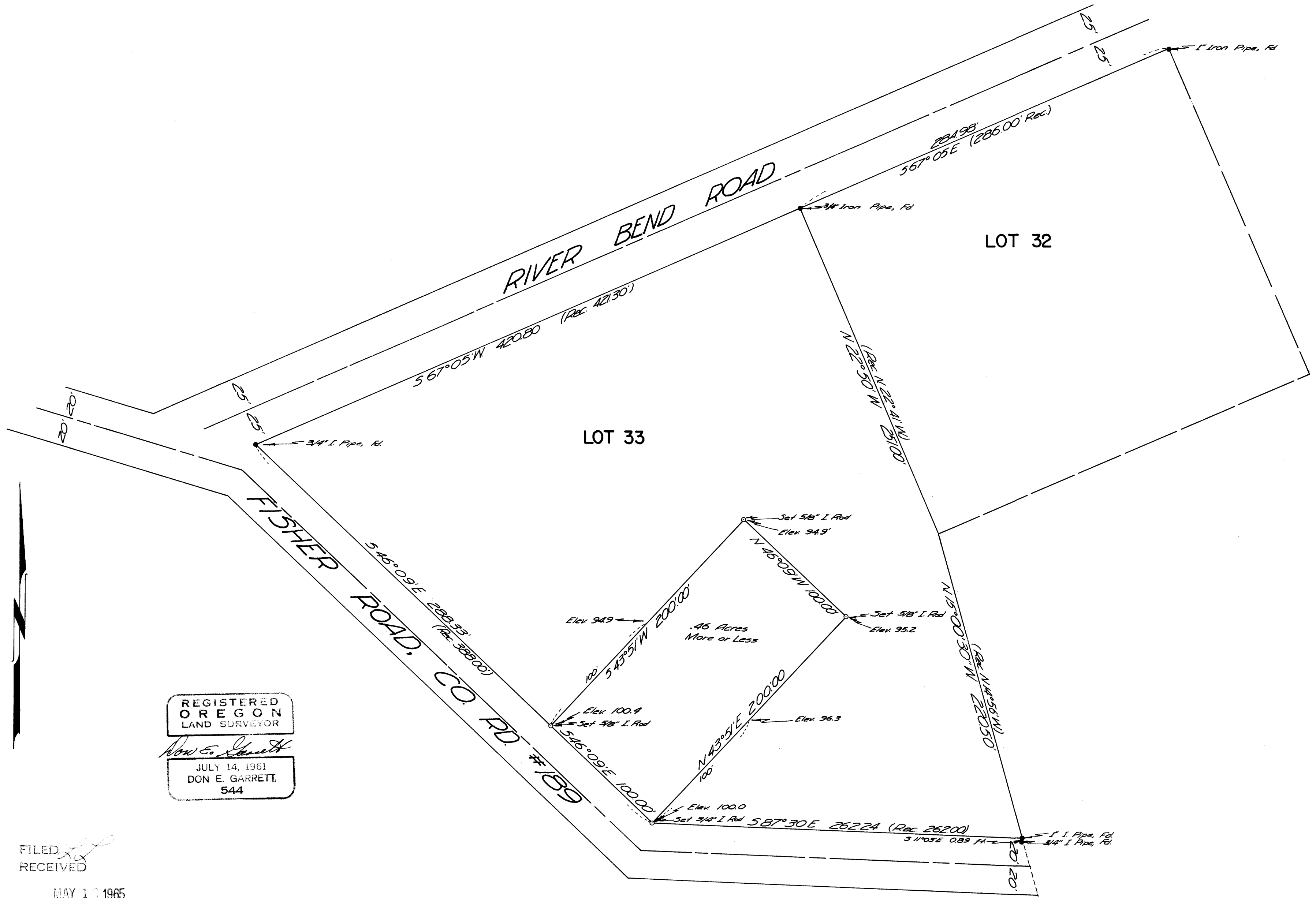


COUNTY SURVEYORS FILE DATA  
DO NOT REMOVE FROM OFFICE

A SURVEY IN LOT 33 OF RIVER BEND ACRES-PLAT "A"  
SEC. 23 T.26S. R.6W. W.M.  
SURVEYED FOR CARL COLLINS MAY 8, 1965  
SURVEYED BY DON E. GARRETT  
SCALE 1"=50'  
Bearings based on North Line of Lot 33



REGISTERED  
OREGON  
LAND SURVEYOR  
*Don E. Garrett*  
JULY 14, 1961  
DON E. GARRETT  
544

FILED  
RECEIVED  
MAY 13 1965

COUNTY SURVEYOR  
DOUGLAS COUNTY, ORE.

FILE M 29 - 59

FILE M 29 - 59