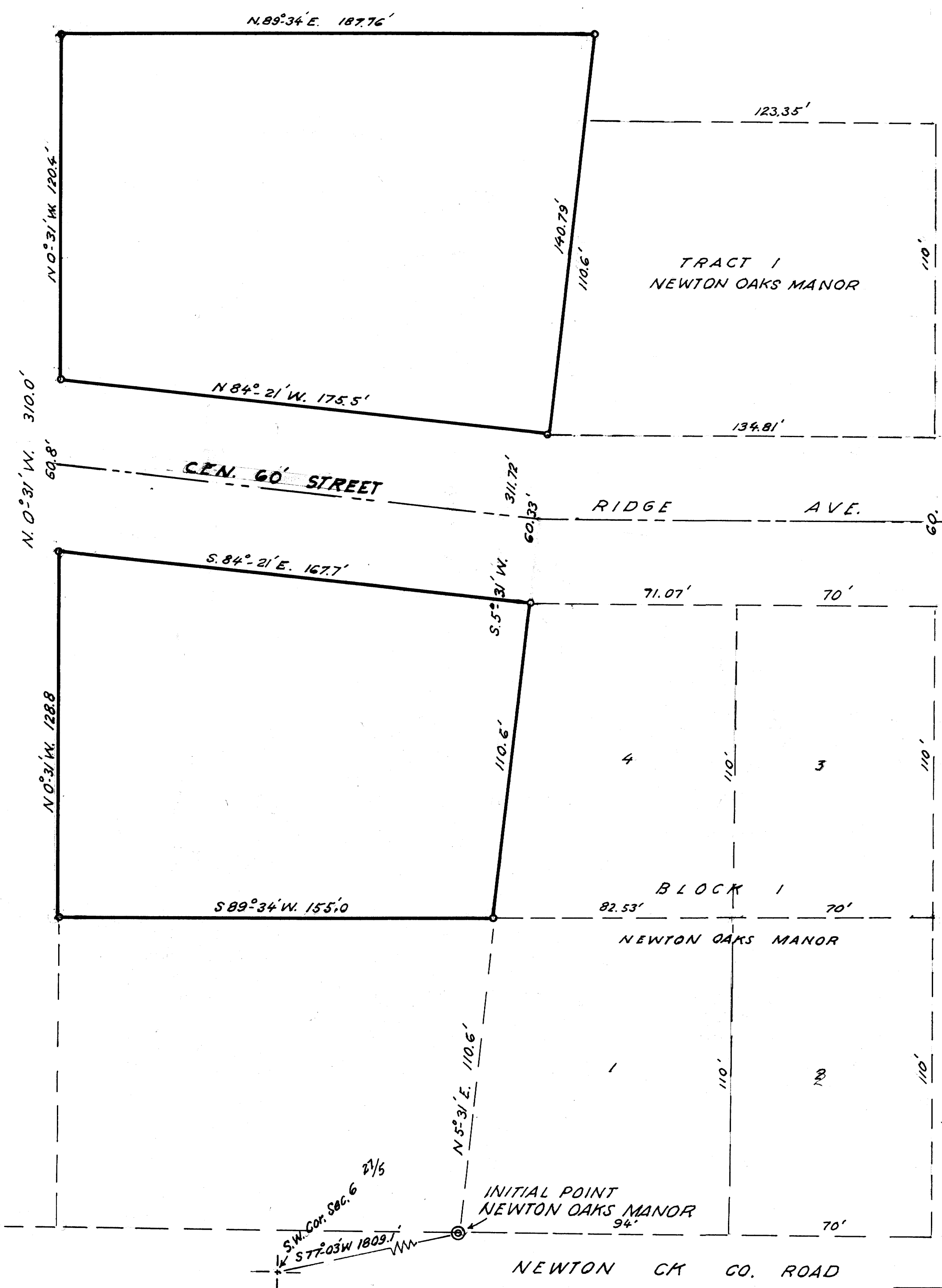




FILED *LL*
RECEIVED
MAY 3 1965
COUNTY SURVEYOR
DOUGLAS COUNTY, ORE.



WM. SIMPSON ACREAGE,
WEST & ADJACENT TO
TRACT 1 & LOT 4, BLOCK 1
NEWTON OAKS MANOR
SEC 6, T. 27S; R. 5W; W.M.
DOUGLAS COUNTY, ORE
APR 1965 1"=30'

COUNTY SURVEYORS FILE DATA
DO NOT REMOVE FROM OFFICE