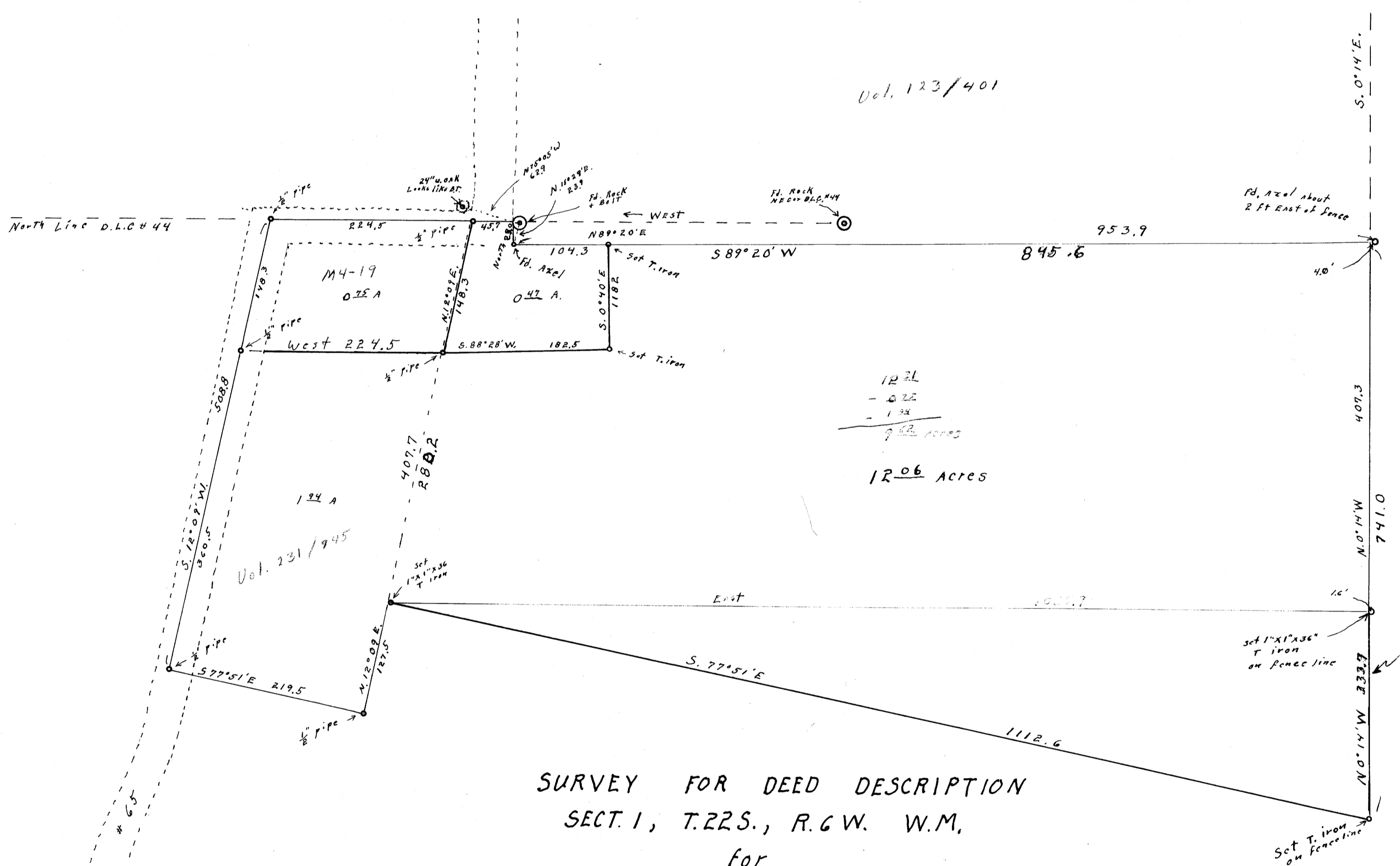


NE. Cor Township
T. 22S., R. 6W., W.M.
Pd Rock in place
+ 7 B. T.

Vol. 123 / 357

Vol. 123 / 401



12.21
- 0.22
- 1.34

9.65 Acres
1206 Acres

SURVEY FOR DEED DESCRIPTION
 SECT. 1, T. 22S., R. 6W. W.M.
 for
 I. W. HAINES
 DRAIN, OREG.
 Scale: 1"=100'
 April 15, 1965

REGISTERED
 OREGON
 LAND SURVEYOR
Wilford N. Haines
 MAY 7, 1948
 WILFORD N. HAINES
 239

FILED *LL*
 RECEIVED
 APR 27 1965
 COUNTY SURVEYOR
 DOUGLAS COUNTY, ORE.

Notes: Record dist. from NE. Cor. D. 22, 74
 To corner # 15 is South 1081.66; 1221.66'
 we measured 1225.7'

Pd. Rock with X
 4 1/2 by 4 1/2 by
 1 1/2

DO NOT REMOVE FROM OFFICE