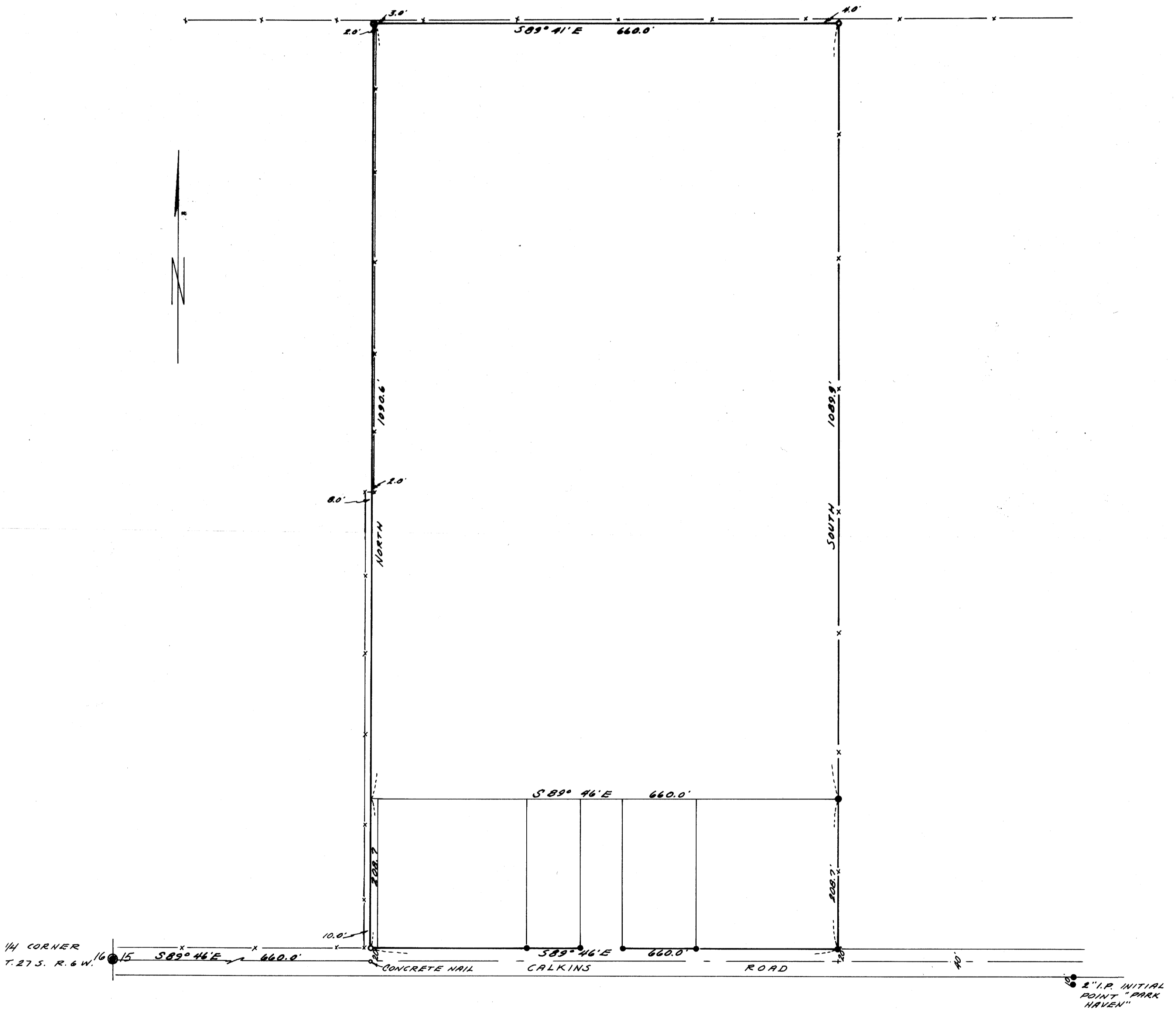


COUNTY SURVEYORS FILE DATA
DO NOT REMOVE FROM OFFICE

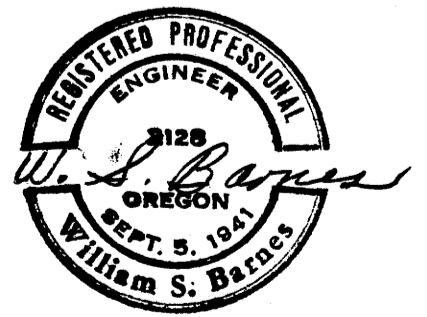
SURVEY TO ESTABLISH PROPERTY CORNERS IN
SW 1/4, OF NW 1/4, SECTION 15, T. 27 S., R. 6 W. W.M.
DOUGLAS COUNTY, OREGON

SURVEYED FOR - HARLAN MOORE
SURVEYED BY - W. S. BARNES

NOV. 1964
SCALE 1" = 100'



• DENOTES MONUMENTS FOUND
○ " 5/8" IRON RODS SET.
NOTE: BASE OF BEARINGS TAKEN FROM
E CALKINS ROAD PER MOORE'S DEED.



FILED *LL*
RECEIVED

DEC - 8 1964

COUNTY SURVEYOR
DOUGLAS COUNTY, ORE.