

SURVEY OF SECTION 10, T.27 S., R.2 W., W.M.

SURVEYED FOR U.S. PLYWOOD CORP.
SURVEYED BY T.E. SHRUM, JR.

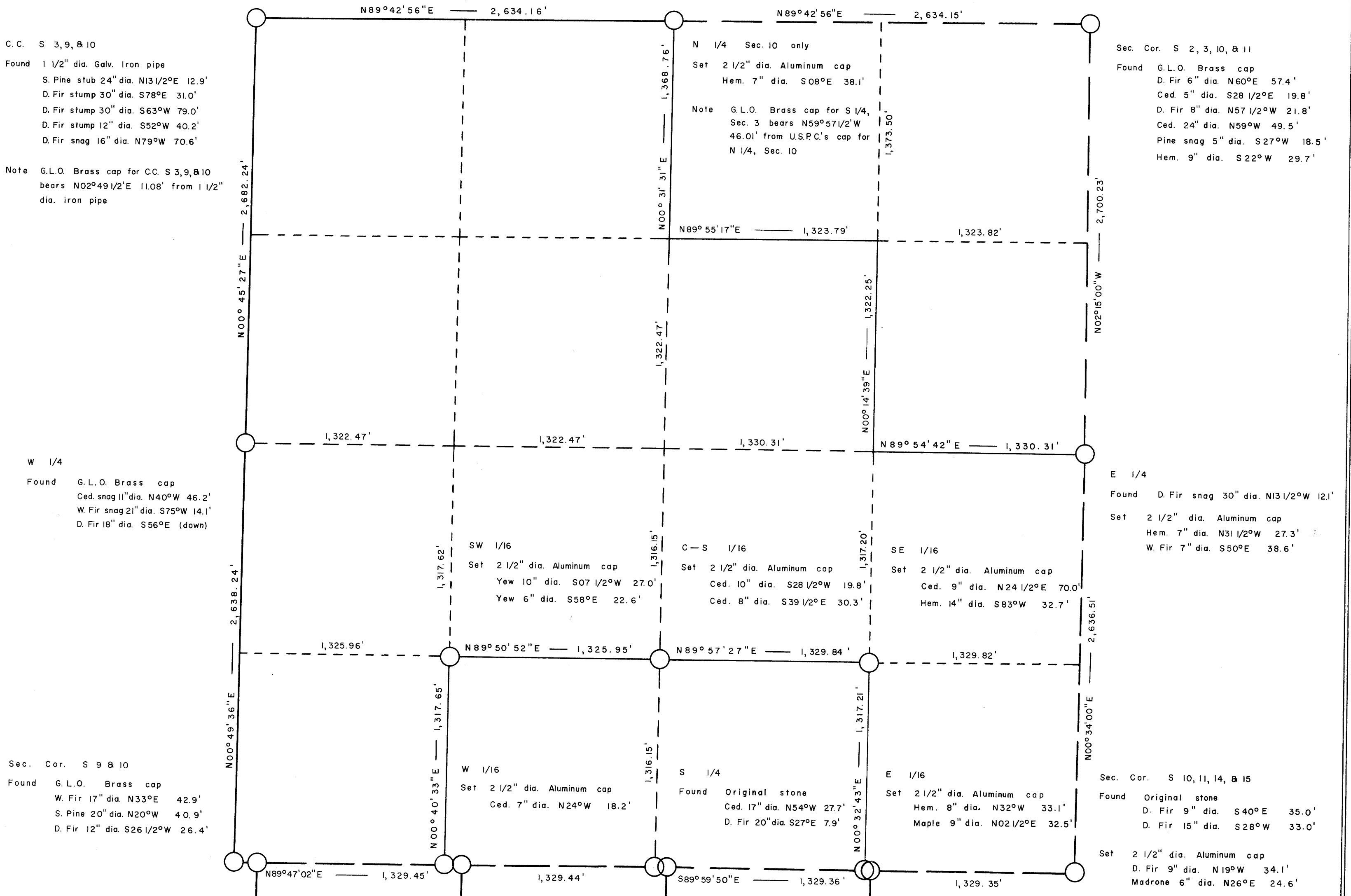
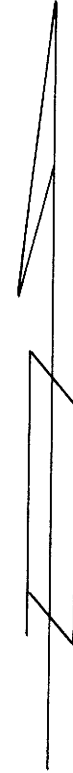
MARCH, 1964

SCALE 1" = 500'

Thomas E. Shrum, Jr.

FILED *LL*
RECEIVED

COUNTY SURVEYOR
DOUGLAS COUNTY, WIS.



28-01/264
FILE M. 29 F. 27