

PROPERTY SURVEYORS FILE DATA
TO THE PLANNING BOARD OFFICE

SURVEY OF SECTION 11, T.27 S., R.2 W., W.M.

SURVEYED FOR U.S. PLYWOOD CORP. FEBRUARY, 1964

SURVEYED BY T. E. SHRUM, JR.

SCALE 1" = 500'

FILED
RECEIVED

MAR 8 1965

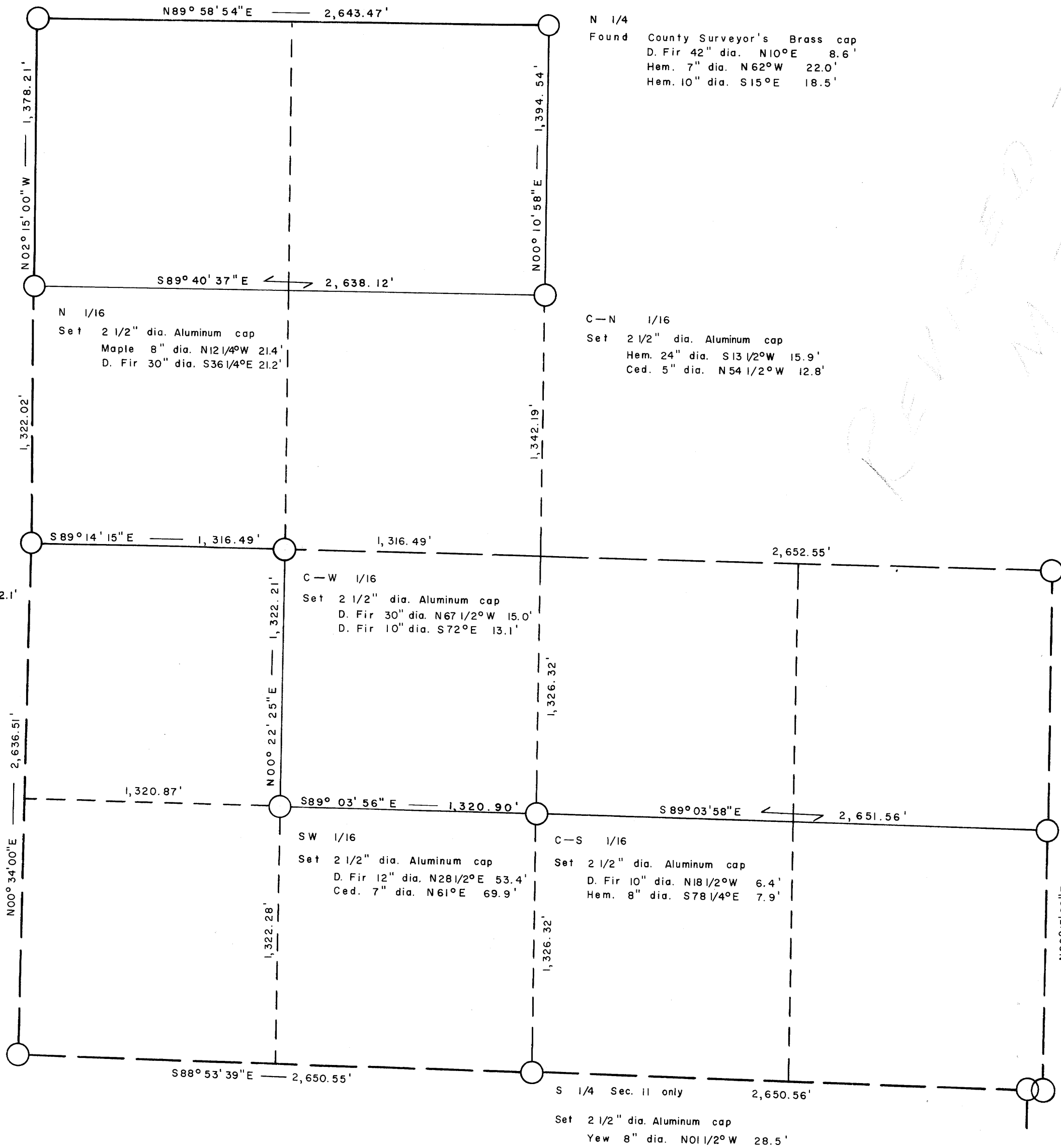
COUNTY SURVEYOR
CLATSOP COUNTY, ORE.

Thomas E. Shrum, Jr.



Sec. Cor. S 2, 3, 10, & 11
Found G.L.O. Brass cap
D. Fir 6" dia. N60°E 57.4'
Ced. 5" dia. S28 1/2°E 19.8'
D. Fir 8" dia. N57 1/2°W 21.8'
Ced. 24" dia. N59°W 49.5'
Pine snag 5" dia. S27°W 18.5'
Hem. 9" dia. S22°W 29.7'

N 1/4
Found County Surveyor's Brass cap
D. Fir 42" dia. N10°E 8.6'
Hem. 7" dia. N62°W 22.0'
Hem. 10" dia. S15°E 18.5'



W 1/4
Found D. Fir snag 30" dia. N13 1/2°W 12.1'
Set 2 1/2" dia. Aluminum cap
Hem. 7" dia. N31 1/2°W 27.3'
W. Fir 7" dia. S50°E 38.6'

C-N 1/16
Set 2 1/2" dia. Aluminum cap
Hem. 24" dia. S13 1/2°W 15.9'
Ced. 5" dia. N54 1/2°W 12.8'

E 1/4
Found Original stone
D. Fir 10" dia. S72°E 34.3'
Set 2 1/2" dia. Aluminum cap
Hem. 8" dia. S30°W 26.3'

Sec. Cor. S 10, 11, 14, & 15
Found Original stone
D. Fir 9" dia. S40°E 35.0'
D. Fir 15" dia. S28°W 33.0'
Set 2 1/2" dia. Aluminum cap
D. Fir 9" dia. N19°W 34.1'
Madrone 6" dia. N26°E 24.6'

S 1/16
Set 2 1/2" dia. Aluminum cap
D. Fir 7" dia. N76°W 62.9'
W. Fir 10" dia. N40°E 46.6'

Sec. Cor. S 11 & 12
Found County Surveyor's Brass cap
W. Fir stump 16" dia. N23°W 27.1'
W. Fir stump 14" dia. N28°E 46.9'
Hem. 38" dia. S35°W 24.4'
D. Fir stump 52" dia. N57 1/2°W 38.0'
D. Fir 58" dia. N26°E 113.7'

SEE SURVEY, 1968
M31-18

FILE M 29 + 26