

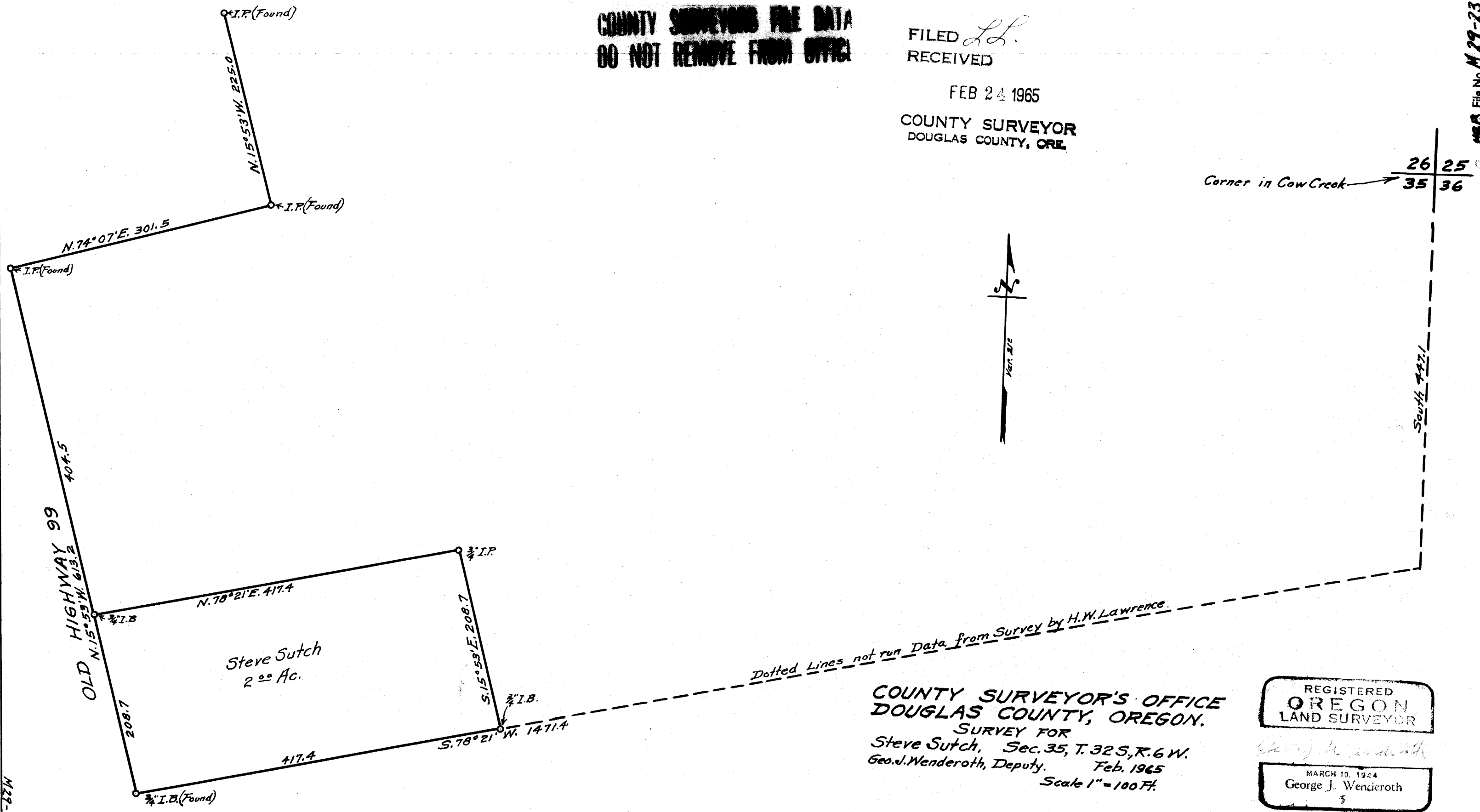
COUNTY SURVEYORS FILE DATA  
DO NOT REMOVE FROM OFFICE

FILED *L.L.*  
RECEIVED

FEB 24 1965

COUNTY SURVEYOR  
DOUGLAS COUNTY, ORE.

M.S.S. File No. M 29-23



COUNTY SURVEYOR'S OFFICE  
DOUGLAS COUNTY, OREGON.  
SURVEY FOR  
Steve Sutch, Sec. 35, T. 32 S., R. 6 W.  
Geo. J. Wenderoth, Deputy. Feb. 1965  
Scale 1" = 100 Ft.

REGISTERED  
OREGON  
LAND SURVEYOR

*George J. Wenderoth*  
MARCH 10, 1964  
George J. Wenderoth  
5

M 29-23