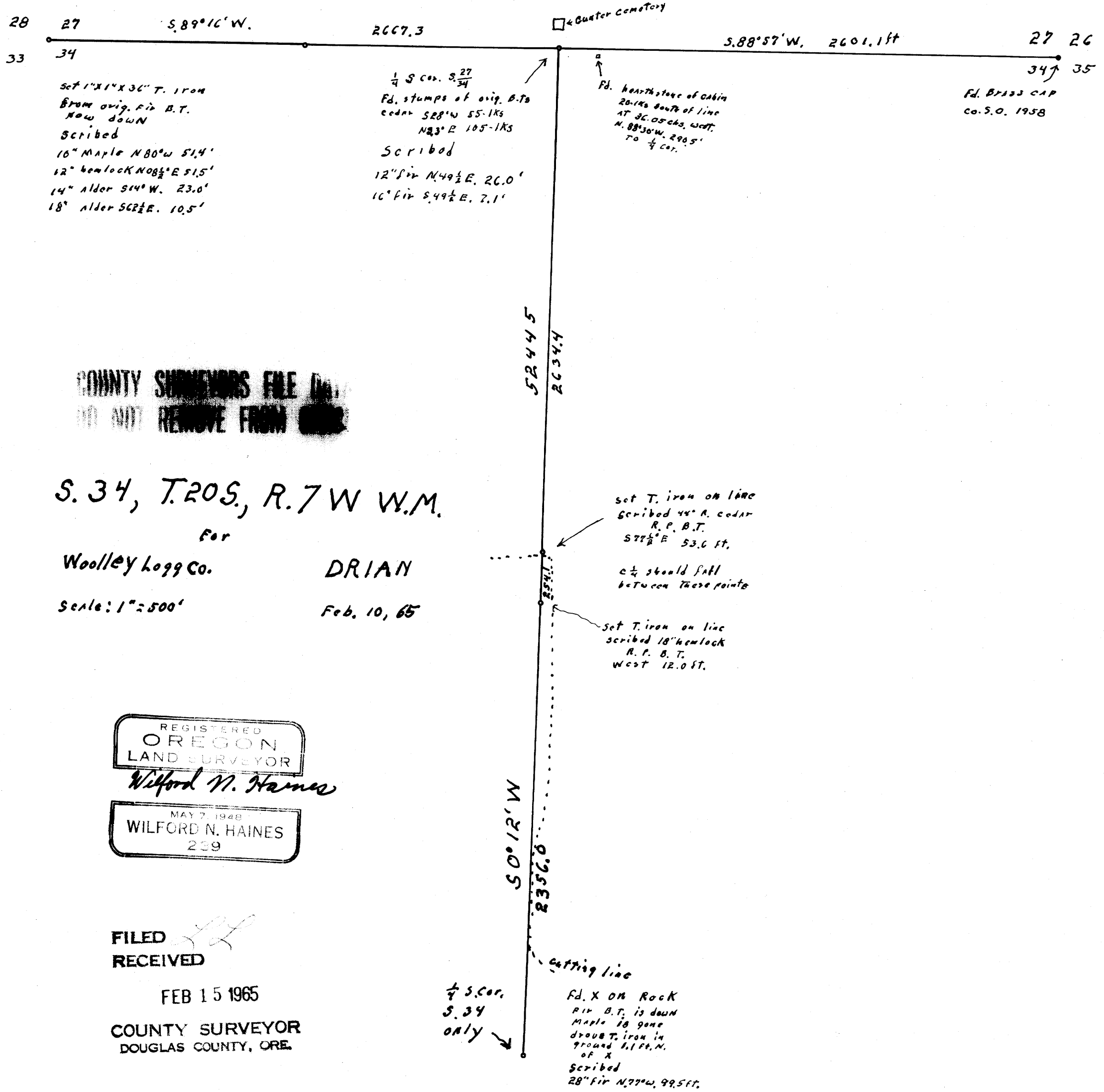


M 29 - 19
F.B. H-9; H-15



28
33

Set 1" X 1" X 36" T. IRON
FROM orig. P. B. T.
NOW DOWN
Scribed
10" Maple N80°W 51.4'
12" hemlock N08½°E 51.5'
14" Alder S14°W. 23.0'
18" Alder S62½E. 10.5'

¼ S. cor. S. 27
24
Fd. stumps of orig. P. B. T.
cedar S28°W 55-1Ks
N23°E 105-1Ks
Scribed
12" Fir N. 49½ E. 26.0'
16" Fir S. 49½ E. 2.1'

Fd. hearthstone of cabin
20-1Ks south of line
AT 26.05 chs. west.
N. 88°30' W. 290.5'
To ¼ cor.

Fd. BRASS CAP
CO. S. O. 1958

COUNTY SURVEYORS FILE IN
DO NOT REMOVE FROM

S. 34, T. 20 S., R. 7 W W.M.
For
Woolley Logg Co. DRIAN
Scale: 1" = 500' Feb. 10, 65

REGISTERED
OREGON
LAND SURVEYOR
Wilford N. Haines
MAY 7, 1948
WILFORD N. HAINES
239

FILED
RECEIVED
FEB 15 1965
COUNTY SURVEYOR
DOUGLAS COUNTY, ORE.

¼ S. cor.
S. 34
only

Fd. X ON Rock
P. B. T. is down
Maple is gone
doubt T. iron in
ground 1/2 ft. N.
of X
Scribed
28" Fir N. 77°W. 99.5ft.

F.B. H-9; H-15

M 29 - 19