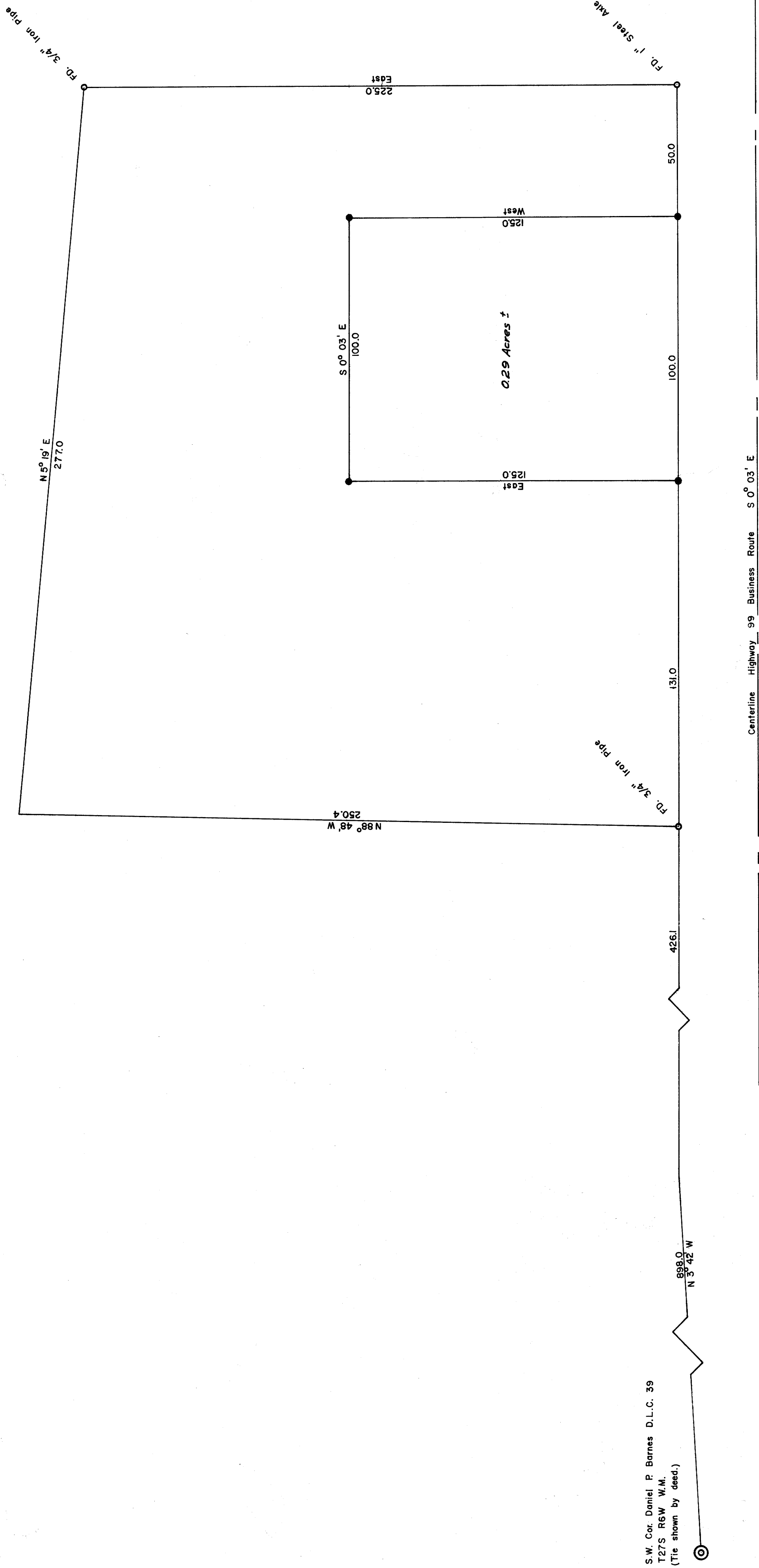


COUNTY SURVEYORS FILE DATA
DO NOT REMOVE FROM OFFICE

N.E. 1/4 SEC. 12 T27S R6W W.M.
Surveyed for S&S Builders Inc.
Surveyed by Don E. Garrett
Feb. 6, 1965
Scale 1" = 30'

● - DENOTES 5/8" IRON ROD SET
Note: Bearings are based on the West Line US 99
Business Route. S 0° 03' E.



S.W. Cor. Daniel P. Barnes D.L.C. 39
T27S R6W W.M.
(Tie shown by dead.)

REGISTERED
OREGON
LAND SURVEYOR
Don E. Garrett
JULY 14, 1961
DON E. GARRETT
544

FILED
RECEIVED

FEB 9 1965

COUNTY SURVEYOR
DOUGLAS COUNTY, ORE.