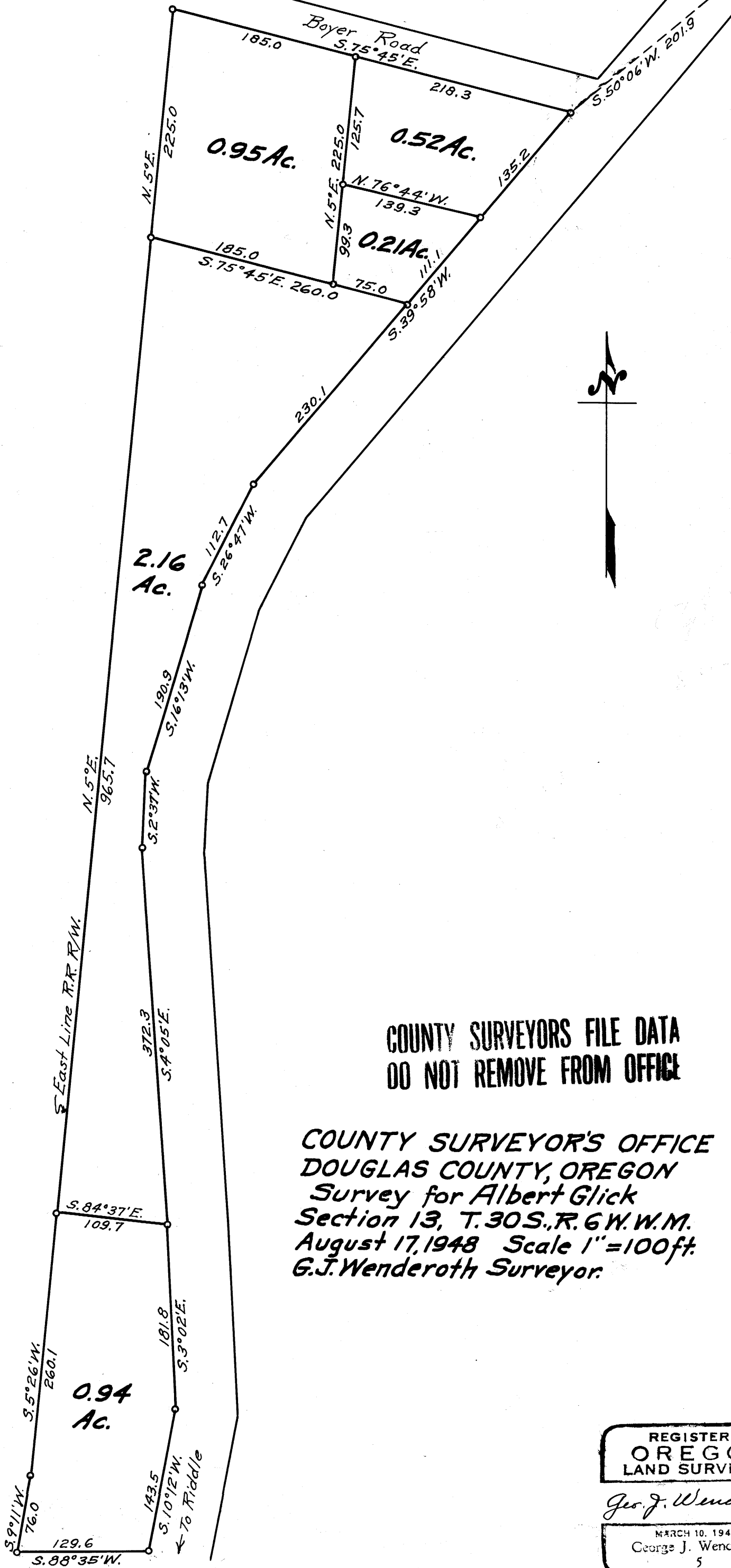


Wm. Judd D.L.C. No. 51



COUNTY SURVEYORS FILE DATA
DO NOT REMOVE FROM OFFICE

COUNTY SURVEYOR'S OFFICE
DOUGLAS COUNTY, OREGON
Survey for Albert Glick
Section 13, T.30S., R.6W.W.M.
August 17, 1948 Scale 1"=100ft.
G.J. Wenderoth Surveyor.

REGISTERED
OREGON
LAND SURVEYOR

George J. Wenderoth

MARCH 10, 1944
George J. Wenderoth
5