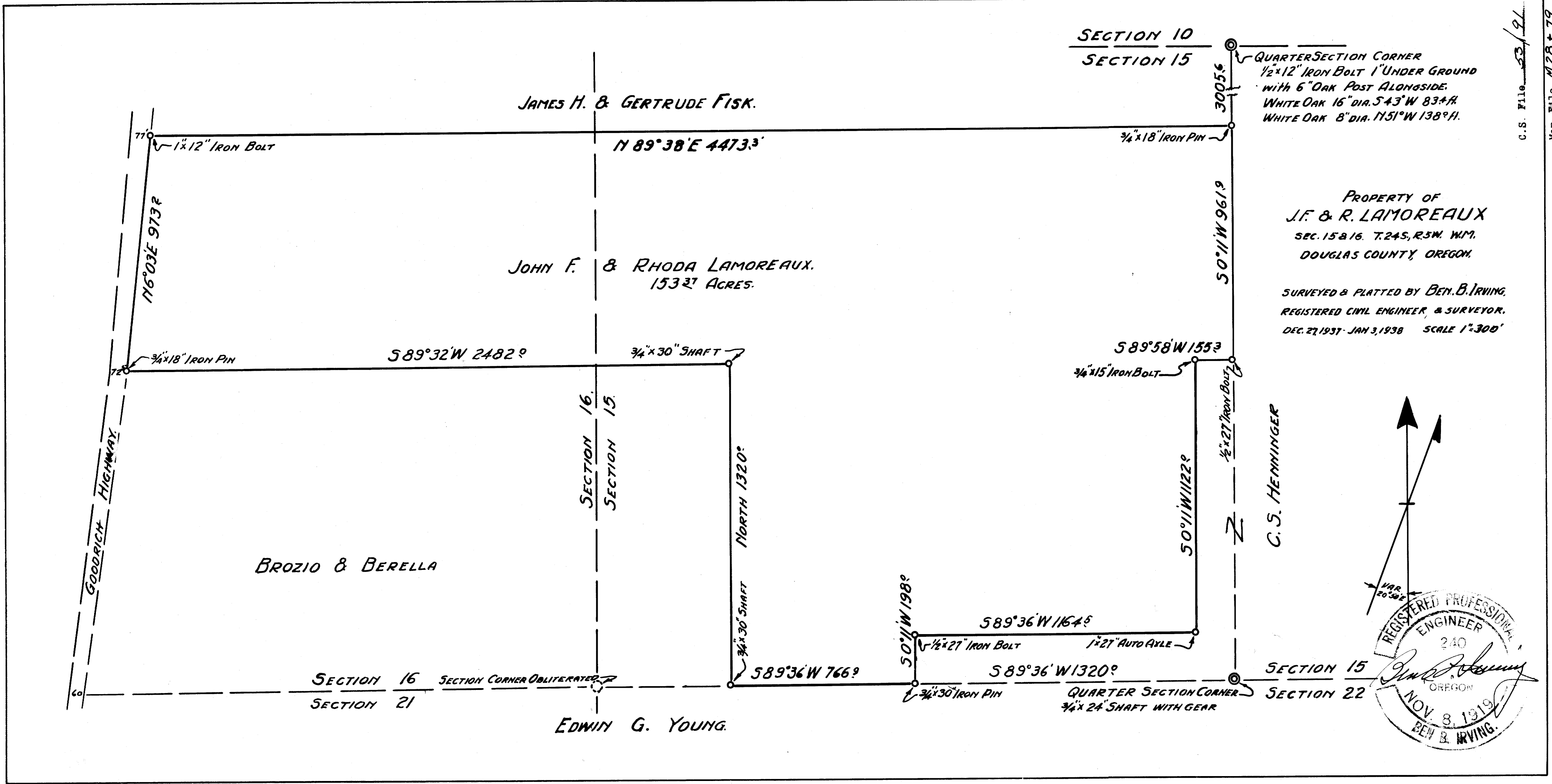
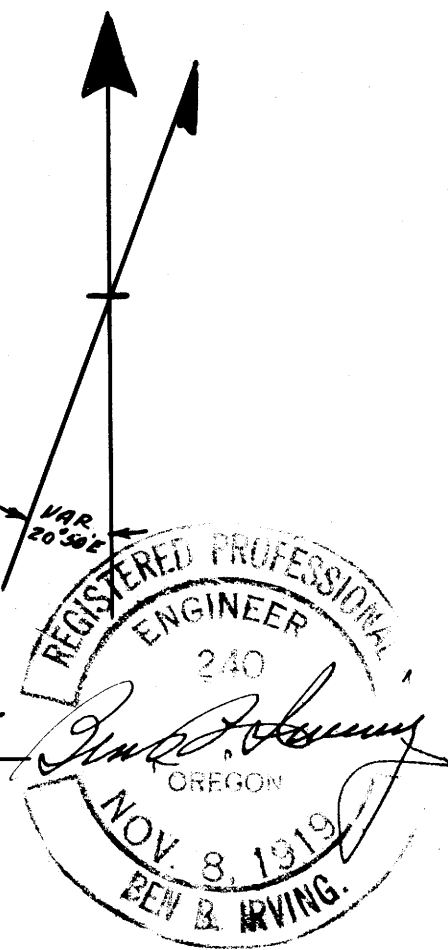


COUNTY SURVEYORS WILL
DO NOT REMOVE FROM OFFICE



PROPERTY OF
J.F. & R. LAMOREAUX
SEC. 15 & 16, T. 24 S., R. 5 W., W.M.
DOUGLAS COUNTY, OREGON.

SURVEYED & PLATTED BY **BEN. B. IRVING**,
REGISTERED CIVIL ENGINEER, & SURVEYOR.
DEC. 27, 1937 - JAN. 3, 1938 SCALE 1"=300'



C. S. HENNINGER

C.S. File 53/91

Map File M 28179