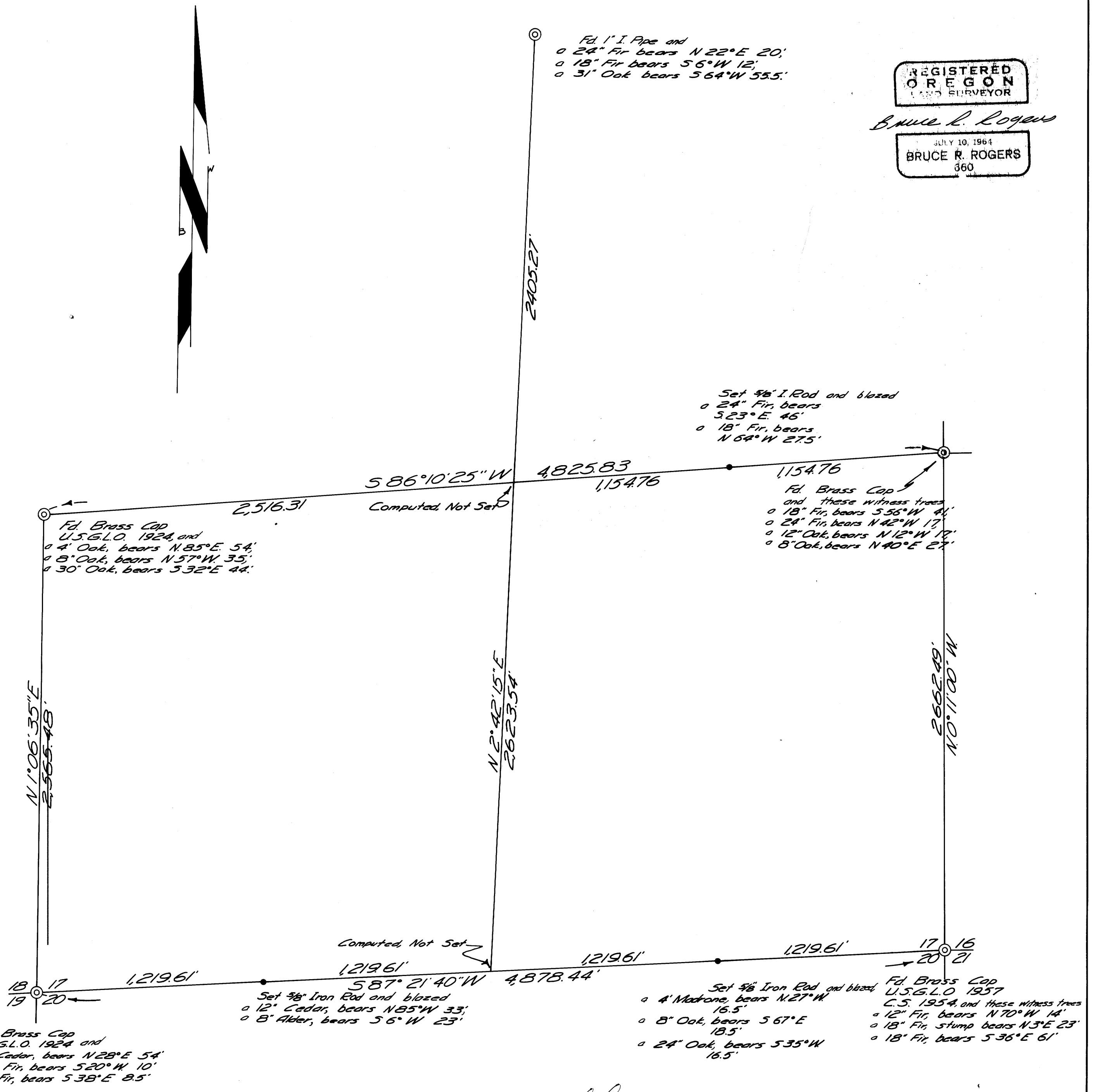


COUNTY SURVEYORS
DO NOT REMOVE FROM FILE

SEC. 17 T. 29S. R. 7W. W.M.

SURVEY TO ESTABLISH W. 1/16, E. 1/16, & C.E. 1/16 CORNERS
SURVEYED FOR E. ZUVER SURVEYED BY BRUCE ROGERS
BEARINGS BASED ON SOLAR OBSERVATION, TAKEN 9-19-1964
SCALE 1"=400' SEPT. 28, 1964



REGISTERED
OREGON
LAND SURVEYOR

Bruce R. Rogers

JULY 10, 1964
BRUCE R. ROGERS
660

FILED L.L.
RECEIVED

OCT 9 1964

COUNTY SURVEYOR
DOUGLAS COUNTY, ORE.