

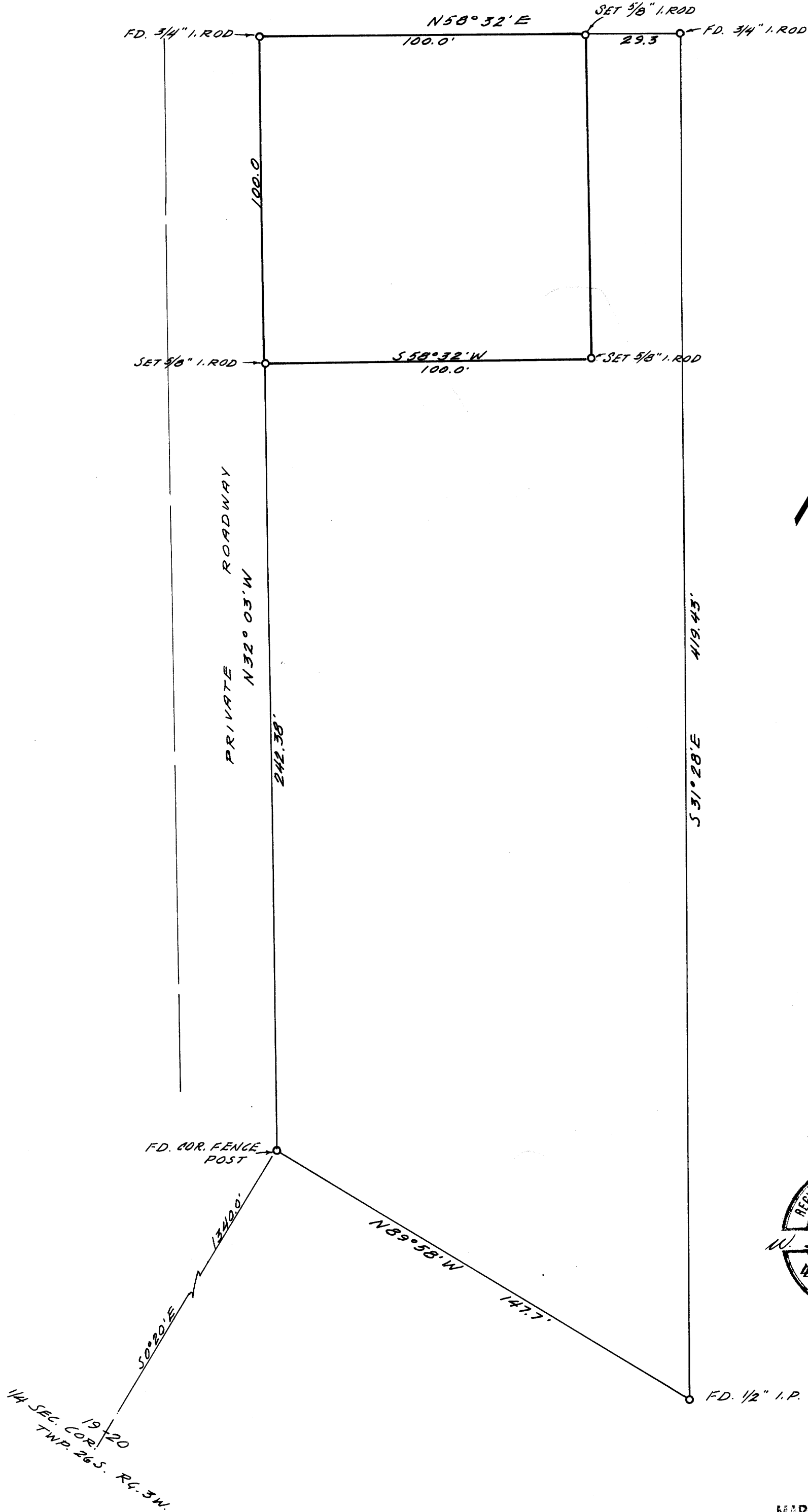
COUNTY SURVEYORS FILE
DO NOT REMOVE FROM OFFICE

SURVEY FOR DEED DESCRIPTION
IN SEC.S 19 & 20, T. 26 S., R. 3 W. W.M.

SURVEYED FOR - CARL HASTINGS
SURVEYED BY - W.S. BARNES

SEPT. 1964.
SCALE - 1" = 30'

GRANDVIEW ST.



FILED *LL*
RECEIVED

SEP 16 1964

COUNTY SURVEYOR
DOUGLAS COUNTY, ORE.

