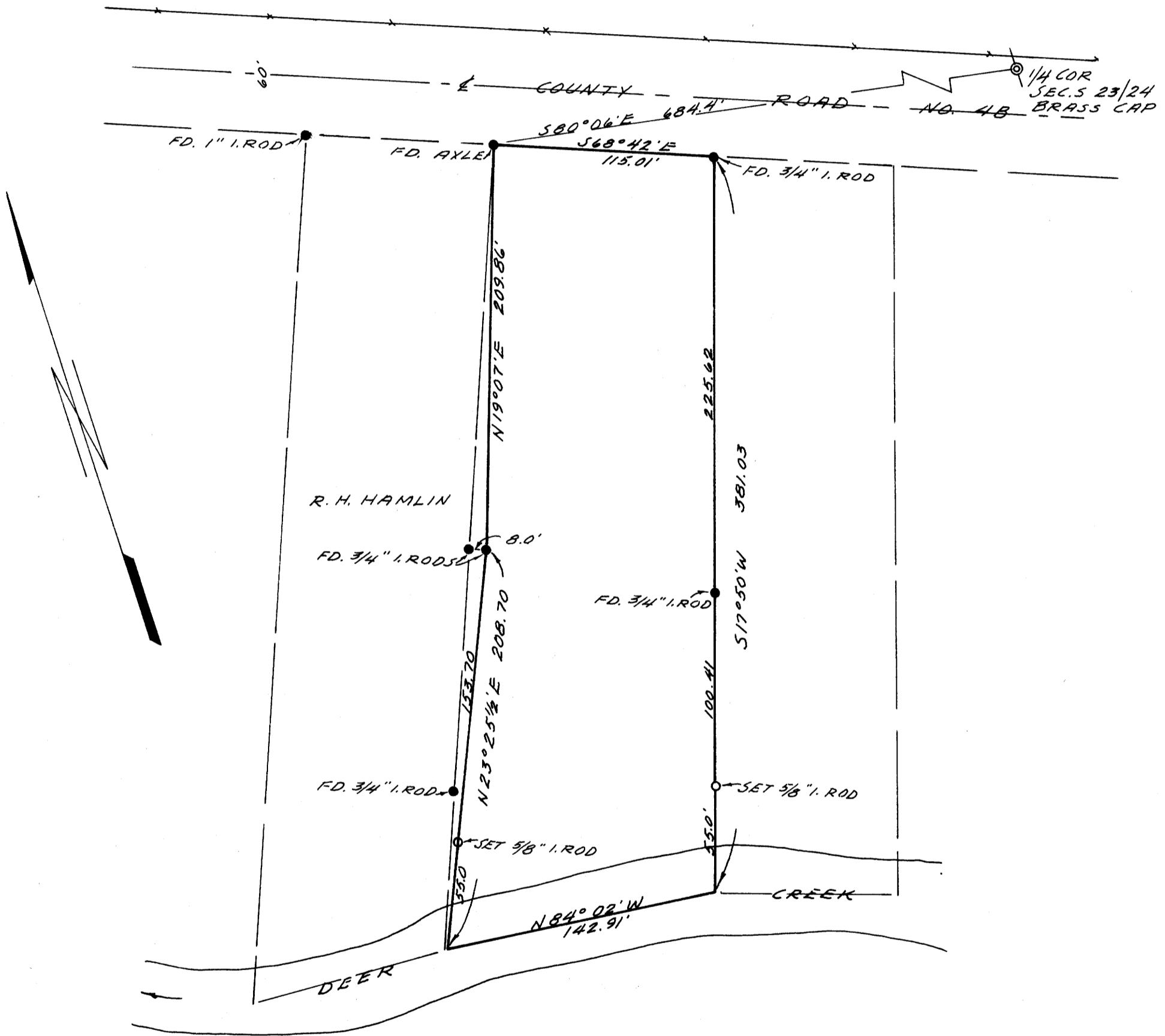


COUNTY SURVEYORS
DO NOT REMOVE FROM OFF

SURVEY FOR DEED DESCRIPTION IN SEC. 23, T.27 S., R.5 W. W. M.

SURVEYED FOR - LOUIS H. BELL
SURVEYED BY - W. S. BARNES

SEPT. 1964
SCALE 1" = 60'



NOTE: BEARINGS BASED ON S68°42'E PER C.S. FILE NO. 45/19.

FILED
RECEIVED

SEP 8 1964

COUNTY SURVEYOR
DOUGLAS COUNTY, ORE.

