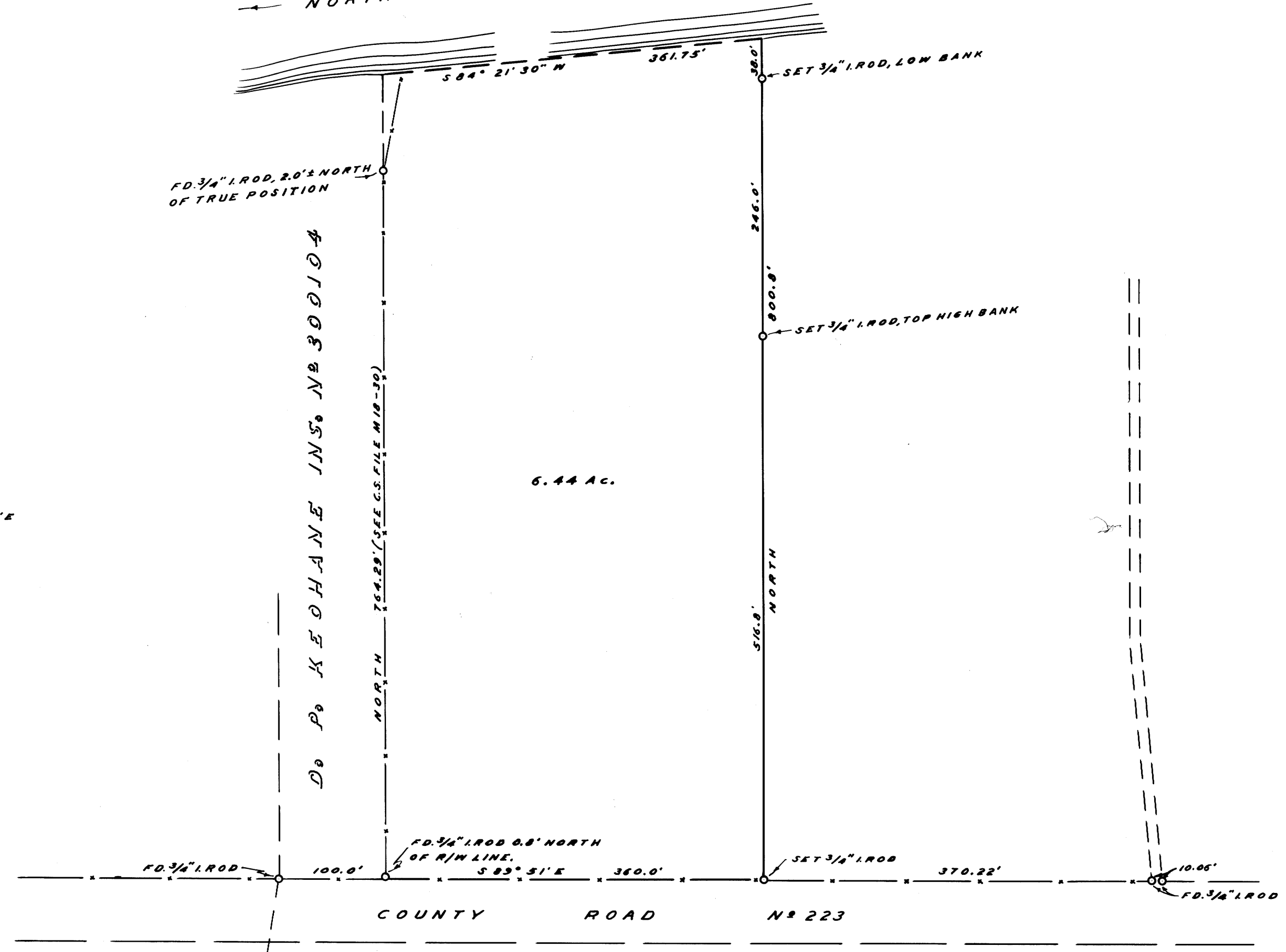


NORTH UMPQUA RIVER

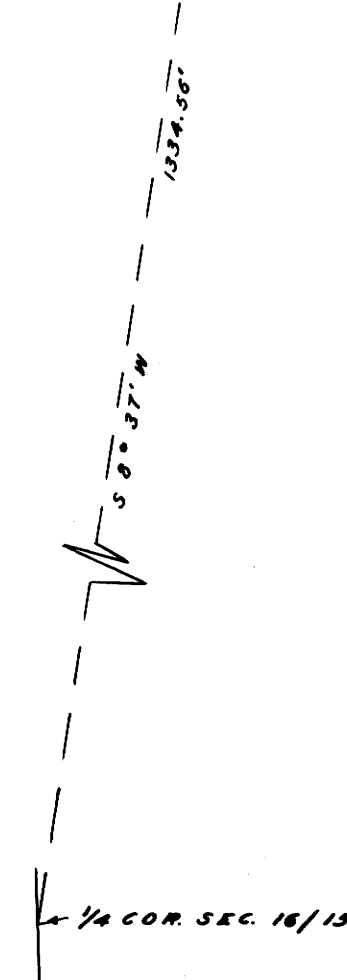


NOTE: BEARINGS BASED ON S 83° 51' E
PER C.S. FILE M 18-30

DEED NO. 300104

6.44 AC.

COUNTY ROAD NR 223



COUNTY SURVEYORS FILE UP
DO NOT REMOVE FROM OFFICE

COUNTY SURVEYOR'S OFFICE
DOUGLAS COUNTY, OREGON

SURVEY FOR DEED DESCRIPTION,
SECTION 15, T26S., R.4W., W.M.

FRED M. DARBY COUNTY SURVEYOR
SURVEYED SEPT. 9, 1964 BY
MILO E. GODFREY - DEPUTY SCALE 1" = 100'
SURVEYED FOR WM. MAGNESS

REGISTERED
OREGON
LAND SURVEYOR

Milo E. Godfrey

MAY 13, 1960
MILO E. GODFREY
496

CS FILE FOLDER

CONTAINS

MORE

INFORMATION