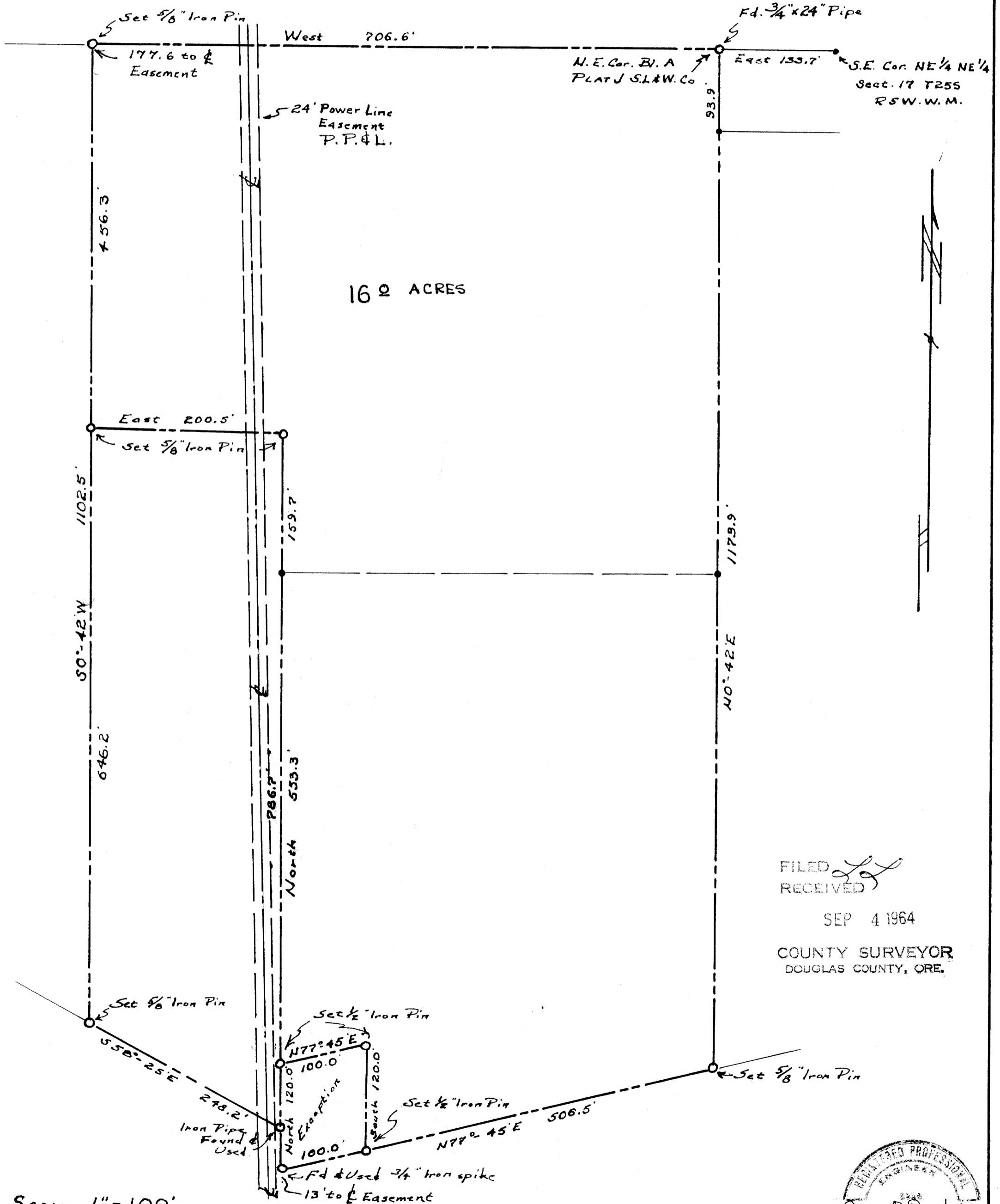


WILLIS WHEELAND PARCELS

in BLOCK A, PLAT J, SUTHERLIN L & W. CO.
SECT. 17 T255 R5W.W.M.

COUNTY SURVEYORS FILE IN
DO NOT REMOVE FROM OFFICE



FILED
RECEIVED

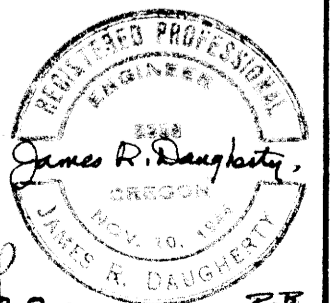
SEP 4 1964

COUNTY SURVEYOR
DOUGLAS COUNTY, ORE.

SCALE: 1" = 100'

JULY 20, 1964

JAMES R. DAUGHERTY
CIVIL-SANITARY ENGINEER
WINSTON, OREGON



FILE M 287-55 P.P.