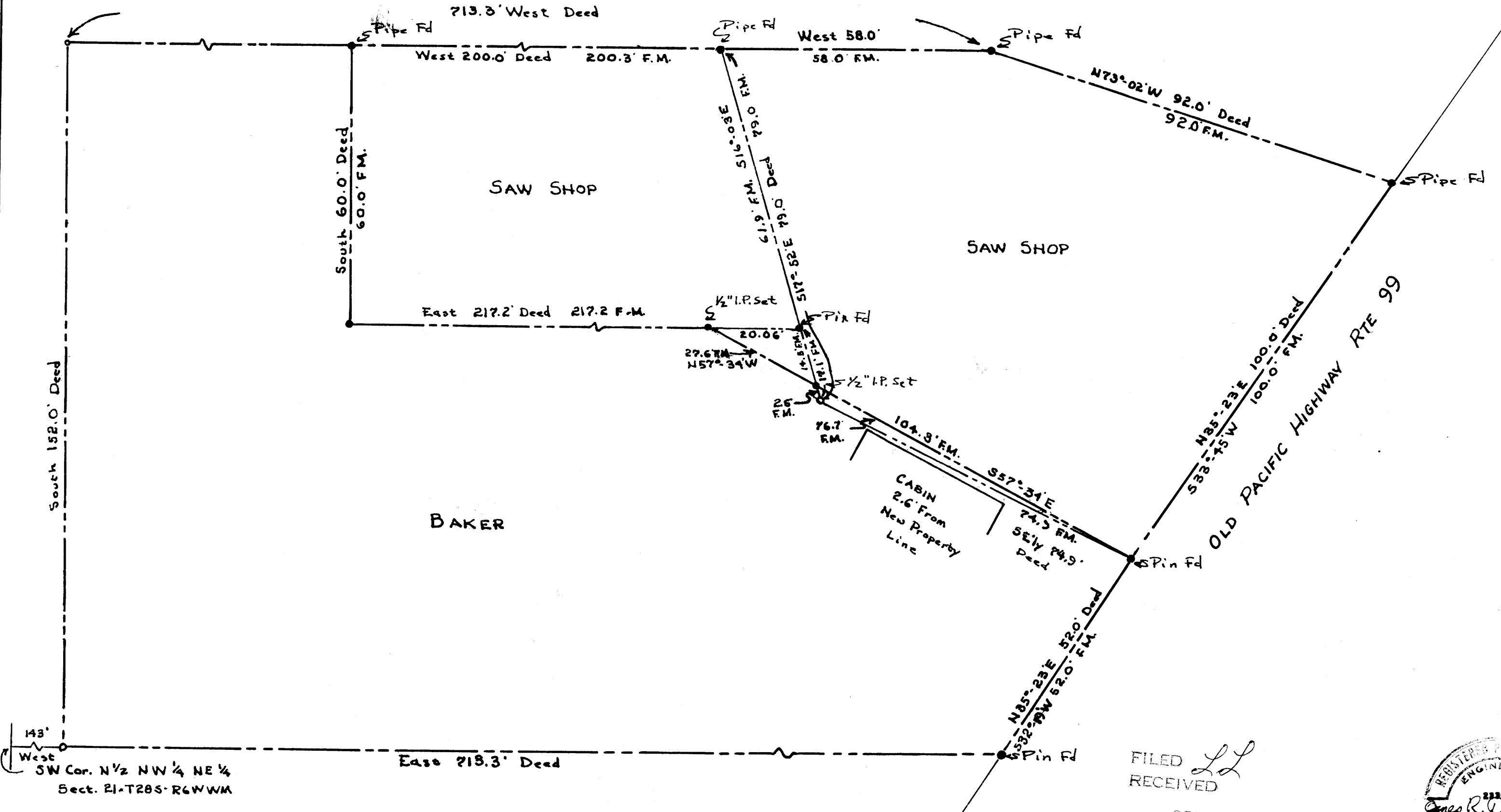


COUNTY SURVEYORS FILE DATA
DO NOT REMOVE FROM OFFICE

VIVIAN M. BAKER PARCELS

SECT. 21-T28S-R6WWM in
DOUGLAS COUNTY OREGON

FILE M 28 152



143'
West SW Cor. N 1/2 NW 1/4 NE 1/4
Sect. 21-T28S-R6WWM

East 218.3' Deed

SCALE: 1"=20'
MAY 30, 1964
REV. JUNE 16, 1964

JAMES R. DAUGHERTY
CIVIL-SANITARY ENGINEER
WINSTON, OREGON

FILED *LL*
RECEIVED

SEP 4 1964

COUNTY SURVEYOR
DOUGLAS COUNTY, ORE.

