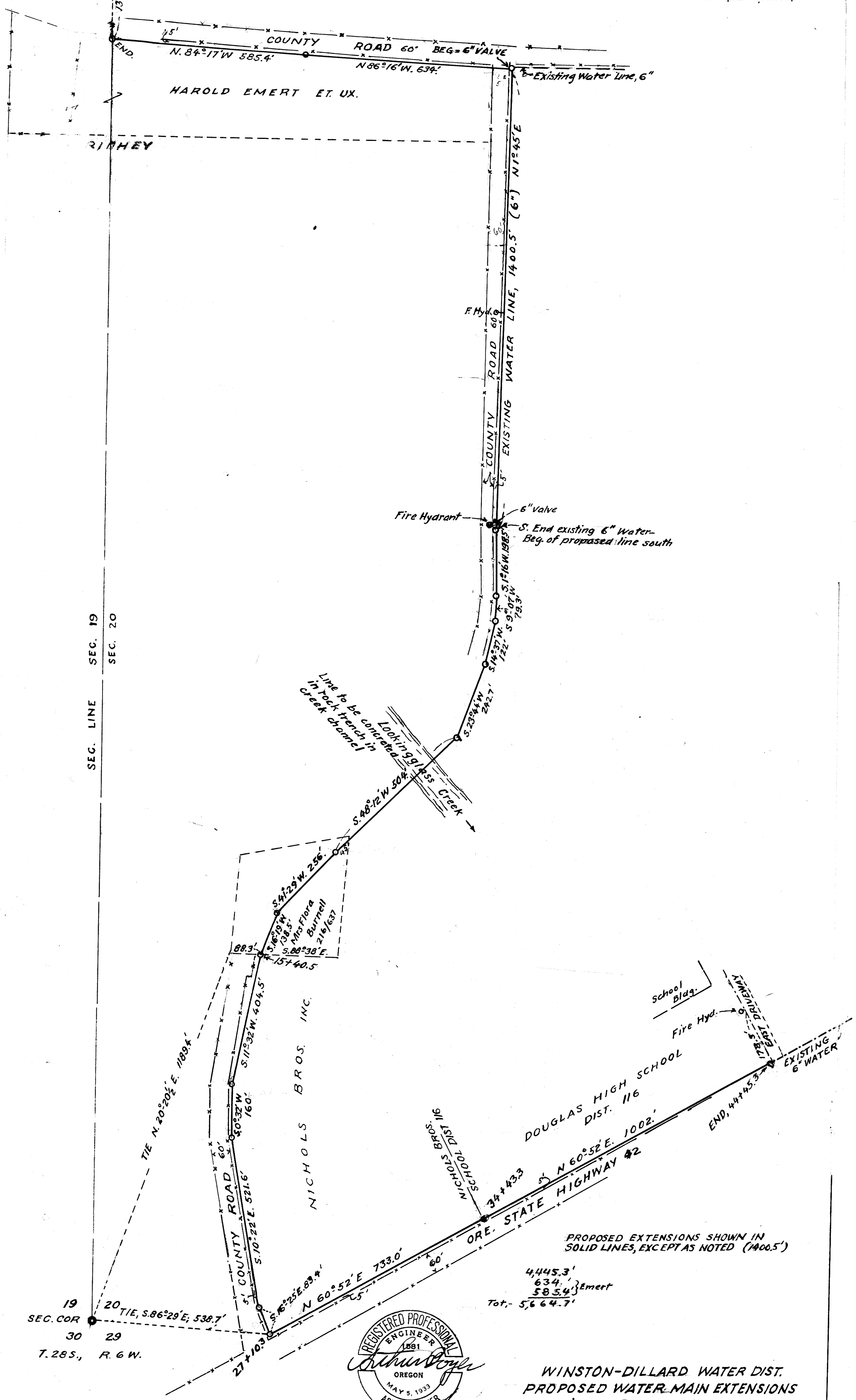


SEC. COR 18 17
T. 28S. R. 6W. 19 20



FILED
RECEIVED
MAY 25 1964
COUNTY SURVEYOR
DOUGLAS COUNTY, ORE.

SEC. COR 19 20
30 29
T. 28S., R. 6W.



WINSTON-DILLARD WATER DIST.
PROPOSED WATER MAIN EXTENSIONS
IN SEC'S. 20 & 29, T. 28S.; R. 6W.; W. M.
DOUGLAS COUNTY, ORE.
MAY 1964 1" = 200 ft.

COUNTY SURVEYORS FILE DATA
DO NOT REMOVE FROM OFFICE