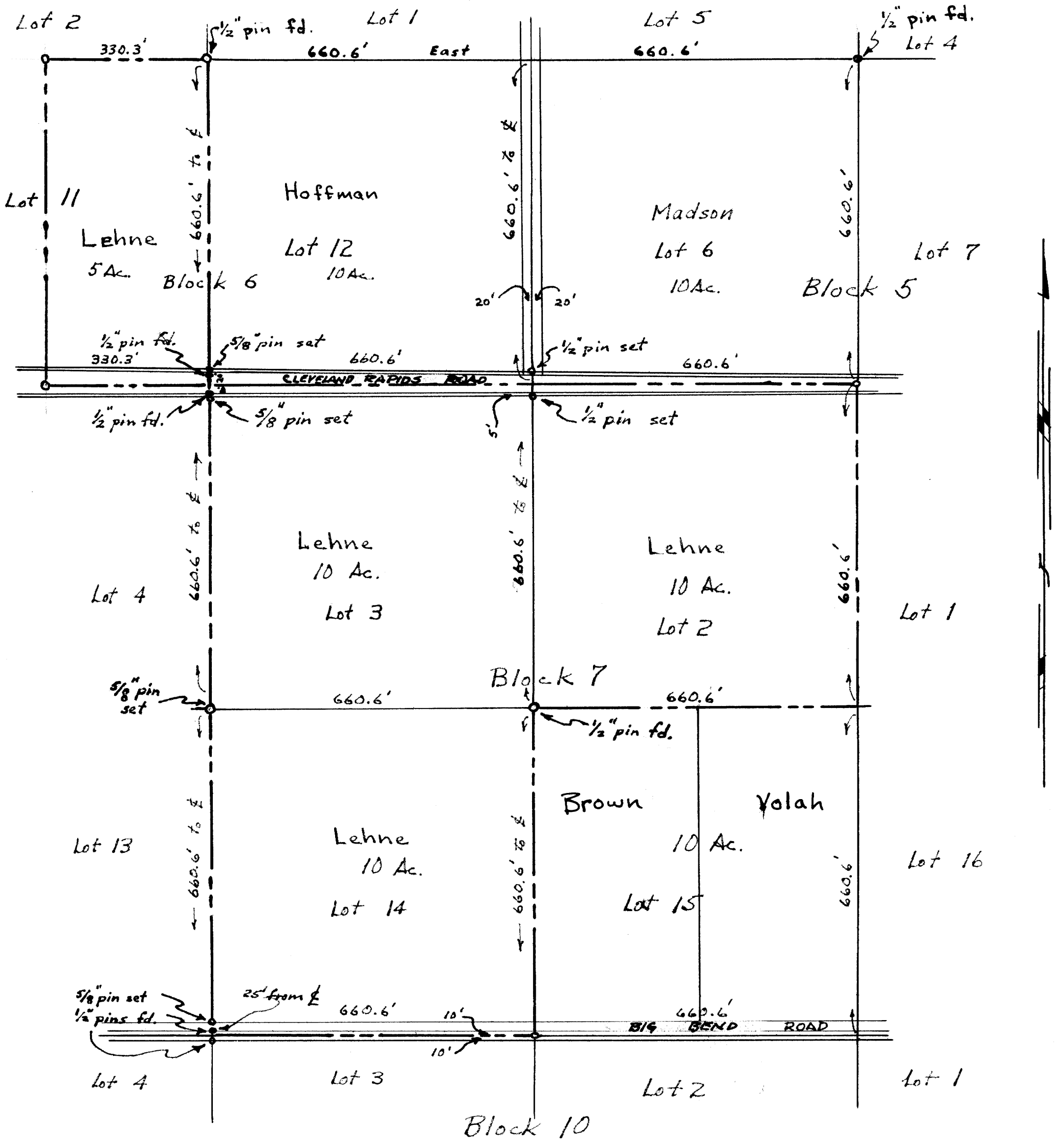


# MYRON LEHNE SURVEY West Line Lots 3+14 - Bl. 7 Plat "A" R.H.O.T. Douglas Co. Ore.



Note: surplus 0.10 feet per 100 ft on lot lines.

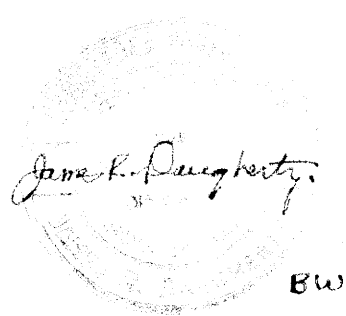
COUNTY SURVEYOR'S OFFICE  
DO NOT REMOVE FROM OFFICE

Scale 1" = 200'  
August 13, 1964

FILED RECEIVED

AUG 14 1964

COUNTY SURVEYOR  
DOUGLAS COUNTY, ORE.



BW

MAP FILE M28-43