

OREGON
LAND OFFICE
STUBBINS BLDG
125

SURVEY FOR COTTAGE GROVE LUMBER CO.

SECTIONS 21, 22, 23, 26, 27, & 28

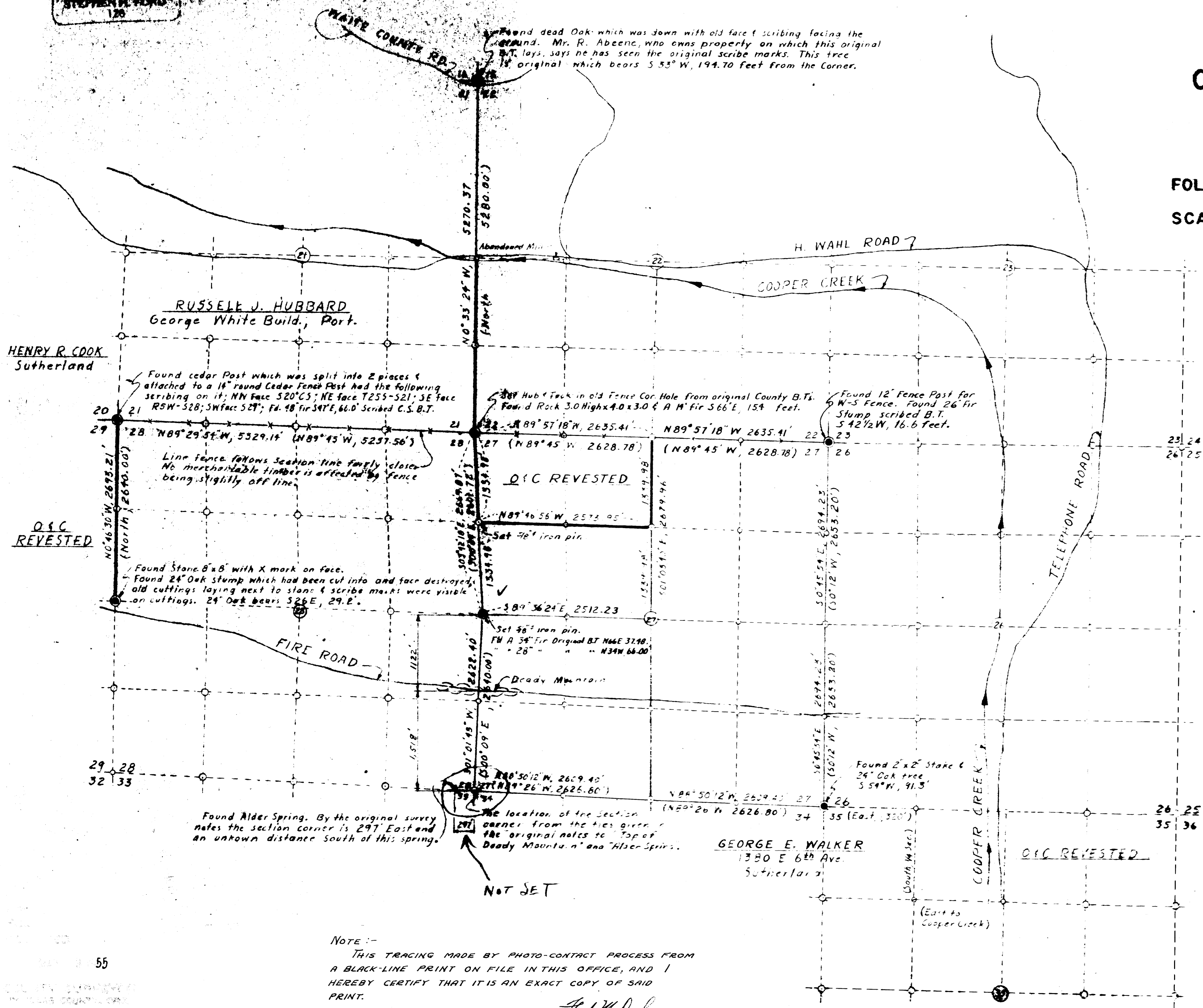
T25S-R5W-W.M.

FOLLETT & FORD, 202 TIFFANY BUILDING EUGENE

SCALE 1"=1,000'

APRIL, 1955

C.S. FILE 41/376
MAP FILE M28/41



LEGEND

- Point used as Corner — ○
 - Found Section Corner — ●
 - Traverse Line — ———
 - Blazed traverse Line ———
 - (5 st. Bearing) indicate recorded Distances & Bearing
 - Stumpage owned by Cottage Grove Lumber Co. — []
- The longitudinal location of the S.E. Corner N42-NW1/4 Section 27 may be in error due to the failure to definitely establish the S.W. Corner of said Section. It appears to us that any location would require that the call to the Alder Spring should be satisfied. Such a location could not move the S.E. Corner N42-NW1/4 Section 27 longitudinally appreciable from the location shown hereon.

NOTE:—
THIS TRACING MADE BY PHOTO-CONTACT PROCESS FROM A BLACK-LINE PRINT ON FILE IN THIS OFFICE, AND I HEREBY CERTIFY THAT IT IS AN EXACT COPY OF SAID PRINT.

8/13/64

Shad W. Deal
COUNTY SURVEYOR

GEORGE E. WALKER
1380 E 6th Ave
Sutherlan

C.S. FILE 41/376
MAP FILE M28/41