

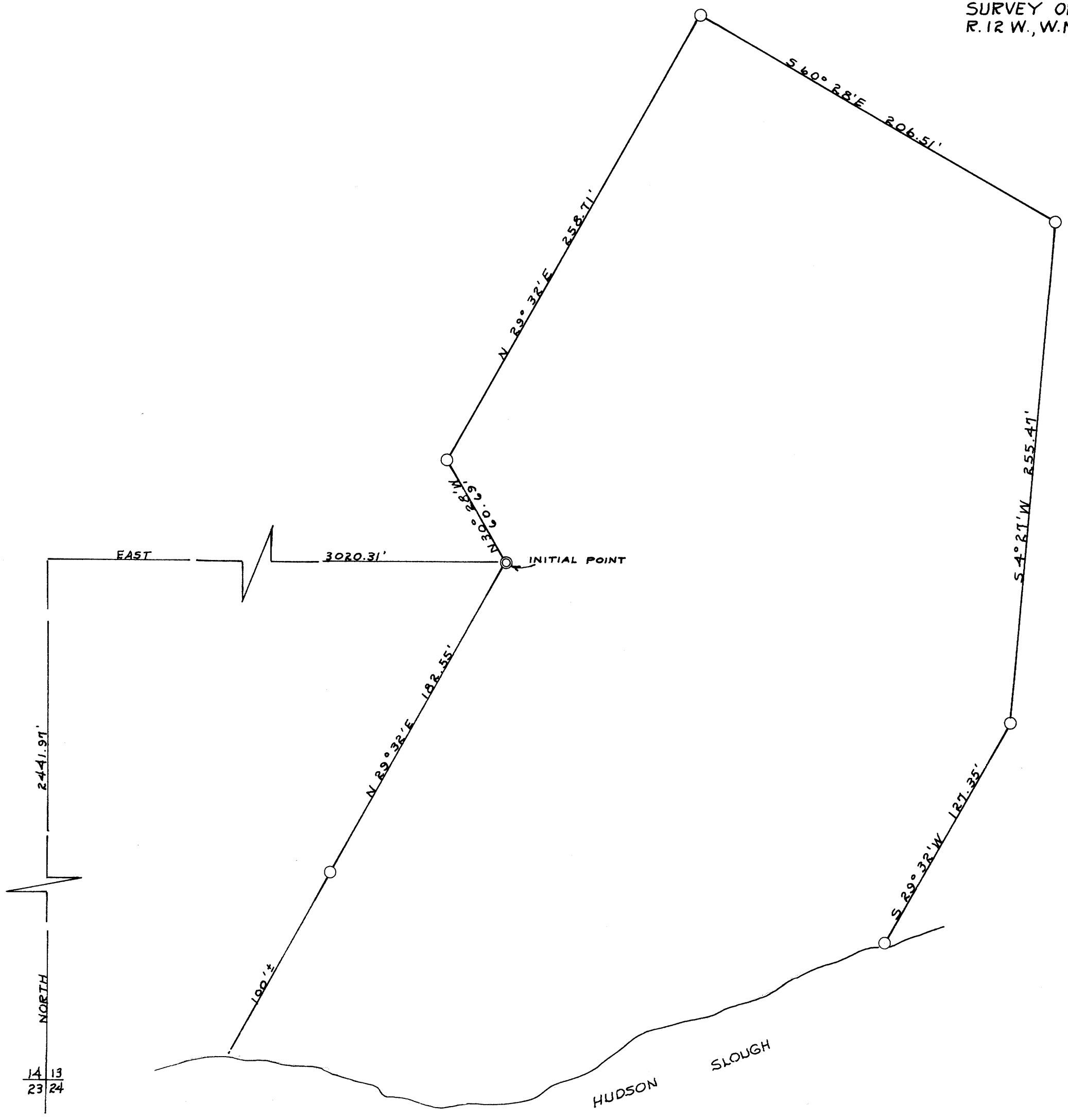
COUNTY SURVEYORS
DO NOT REMOVE FROM

SURVEY OF A PORTION OF SECTION 13, T. 21 S.,
R. 12 W., W.M., DOUGLAS COUNTY, OREGON

For: ELLIS W. KEY

Corners found: \odot
Corners set: \circ 1" pipe
Scale: 1" = 50'
July 1, 1964

Basis for bearings: Magnetic Variation
20° 30' East



FILED
RECEIVED

JUL 22 1964

COUNTY SURVEYOR
DOUGLAS COUNTY, ORE.

REGISTERED
OREGON
LAND SURVEYOR

Warren D. Footman

MAY 10, 1967
WARREN D. FOOTMAN
389

NORTH
Var. 20° 30' E

14 13
23 24