

COUNTY SURVEYORS FILE DATA
DO NOT REMOVE FROM OFFICE

C.S. FILE 37/105
MAP FILE M 28/29

13 7
24 18
Sec. Cor. 4" Post
16" Black Oak N78°30'E 39' Old BT.
14" Fir S 80°30'E 59' ft.
8" Black Oak N23°18'W 210' ft.
24" Black Oak N23°18'W 210' ft.

1/4 Sec. Cor. 2" x 3/8" iron pipe
14" Black Oak N22°0'E 72' ft.
1/2" Cedar 566°0'W 54' ft.

1/4 Sec. Cor. iron pipe in road at Wilmfreds
36" black oak S70°1/2'E 40' ft
24" Fir S 3° E 34' ft. (tree cut slump remains)

Sec. Cor. 2" x 3/8" iron pipe
18" Fir S41°30'W 215' ft.
30" 5 14'15"E 211' ft.
15" White Oak S47°45'E 611' ft.

1/16 Sec. Cor. 2" x 3/8" iron pipe
30" maple N 36°55'W 297' ft.

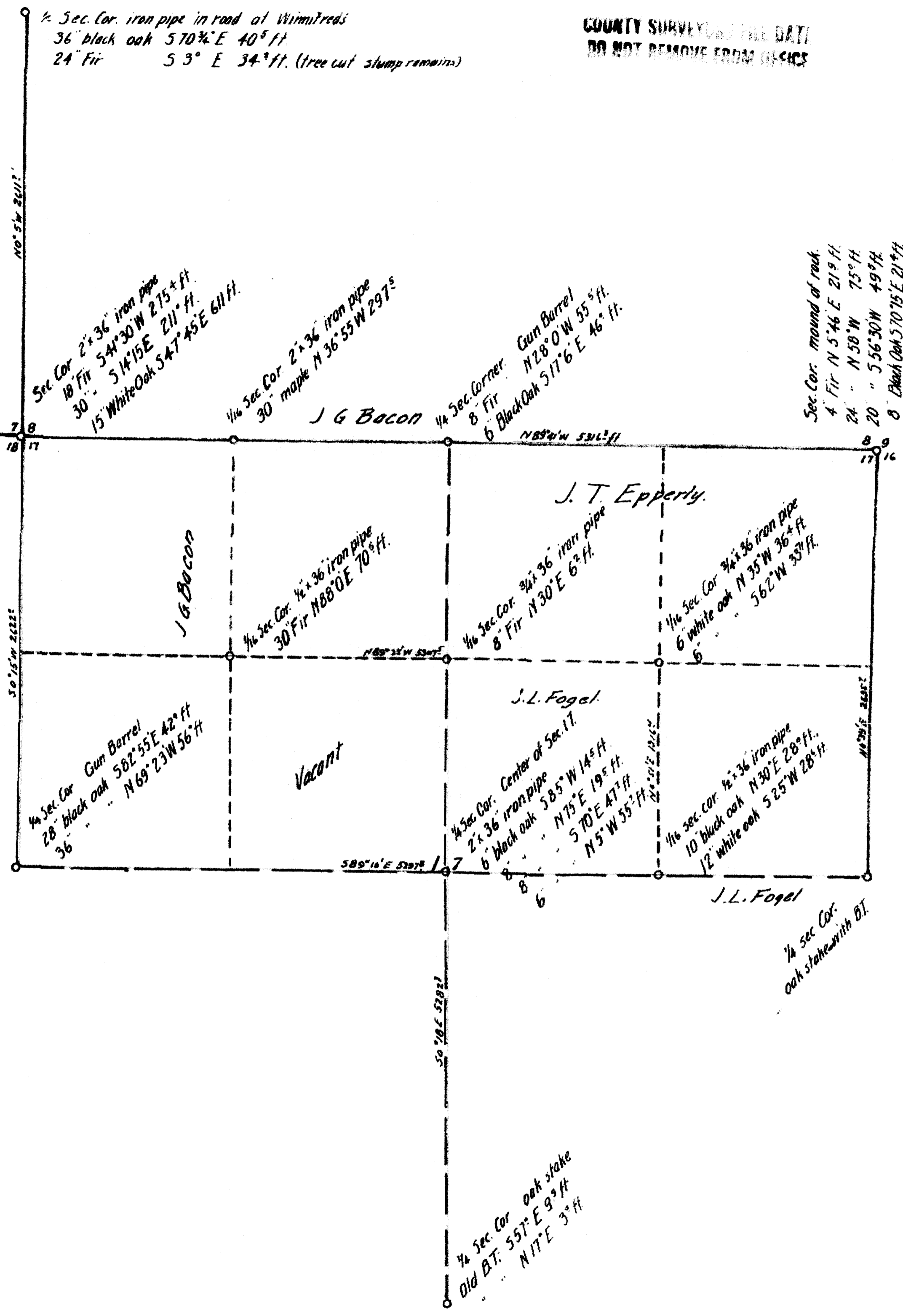
1/4 Sec. Corner Gun Barrel
8" Fir N28°0'W 55' ft.
6" Black Oak S77°6'E 46' ft.

Sec. Cor. mound of rock
4" Fir N 5°46'E 219' ft.
24" N 58°W 75' ft.
20" S 56°30'W 49' ft.
8" Black Oak S70°15'E 214' ft.

Map of Property of
J. T. EPPERLY
SECTION 17 T.26S., R.6 W., W.M.
Office of
BEN. B. IRVING
Civil Engineer and Surveyor
Scale 1" = 500'
Surveyed August 1926. Plotted Aug 21, 1926

Beginning at the N.E. corner of section 17 I ran a traverse west. On this traverse I found old line blazes but no corners until I reached the N.W. corner of section 18. I then ran a traverse from the 1/4 section corner common to sections 7 and 8, to the 1/4 section corner common to sections 17 & 18. This last corner I relocate from one original B.T. The missing corners were reestablished by proportional distances. The center of the section was established at the intersection of line connecting the 1/4 section corners at the opposite sides of the section as determined by traverses between the respective corners. The traverse through the north half of the section was then run and the 1/16 section corners located. A description of all corners established is indicated on the map together with a description of old corners found

Ben. B. Irving



C.S. FILE 37/105
MAP FILE M 28/29

COUNTY SURVEYORS FILE DATA
DO NOT REMOVE FROM OFFICE