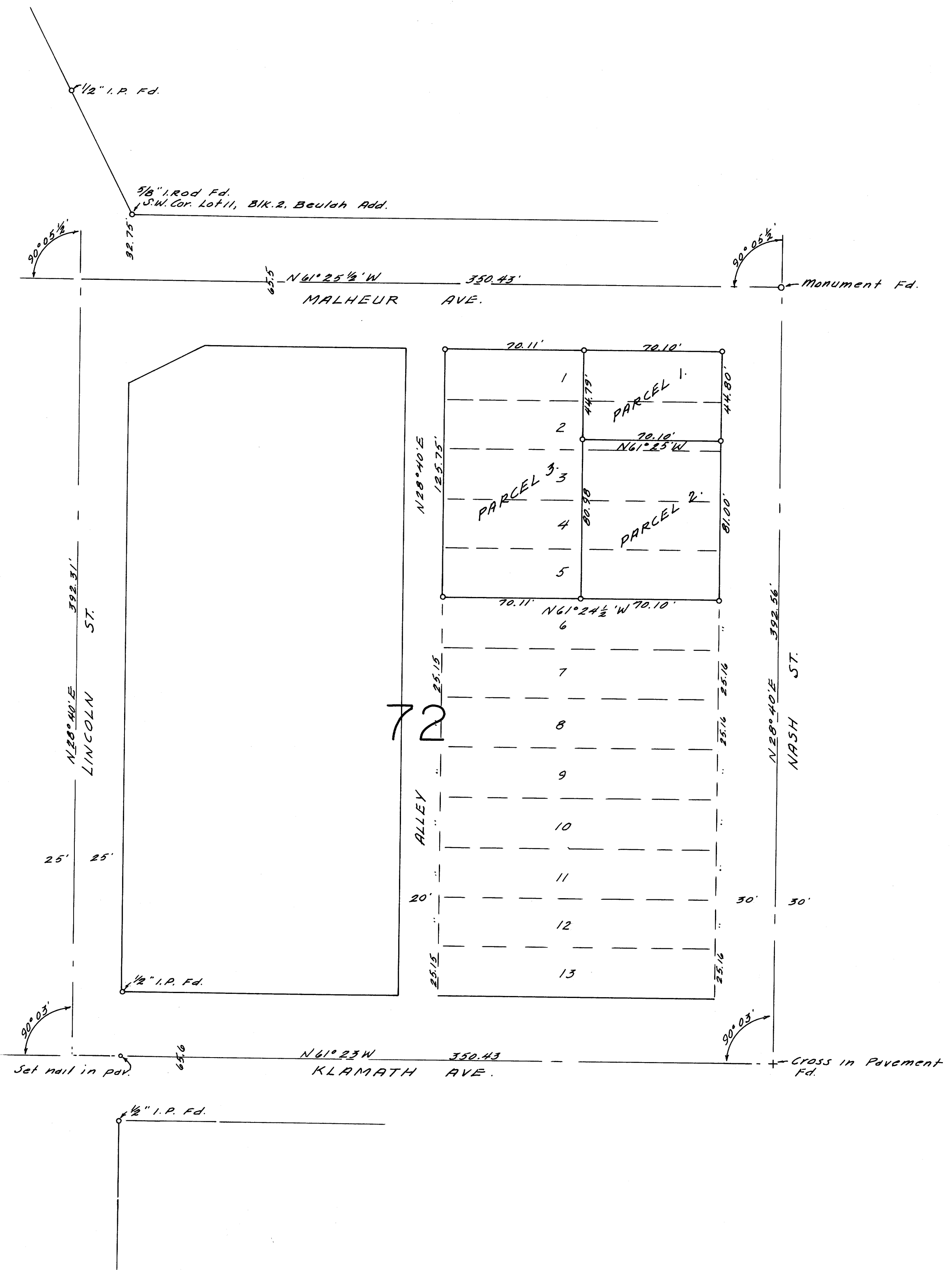


COUNTY SURVEYORS FILE DATA
DO NOT REMOVE FROM OFFICE

MAP OF
SURVEY FOR DEED DESCRIPTION
IN BLOCK 72, SUBDIVISION "A",
KINNEY'S IMPROVED PLAT,
ROSEBURG, ORE.

SURVEYED FOR - MRS. OSCAR BERRY JUNE 1964
SURVEYED BY - W. S. BARNES SCALE 1" = 40'



o - Denotes 1/2" steel tube with survey cap set unless otherwise noted.



FILED
RECEIVED

JUN 29 1964

COUNTY SURVEYOR
DOUGLAS COUNTY, ORE.