

DRIAN CITY LIMITS SURVEY

scale: 1" = 40'

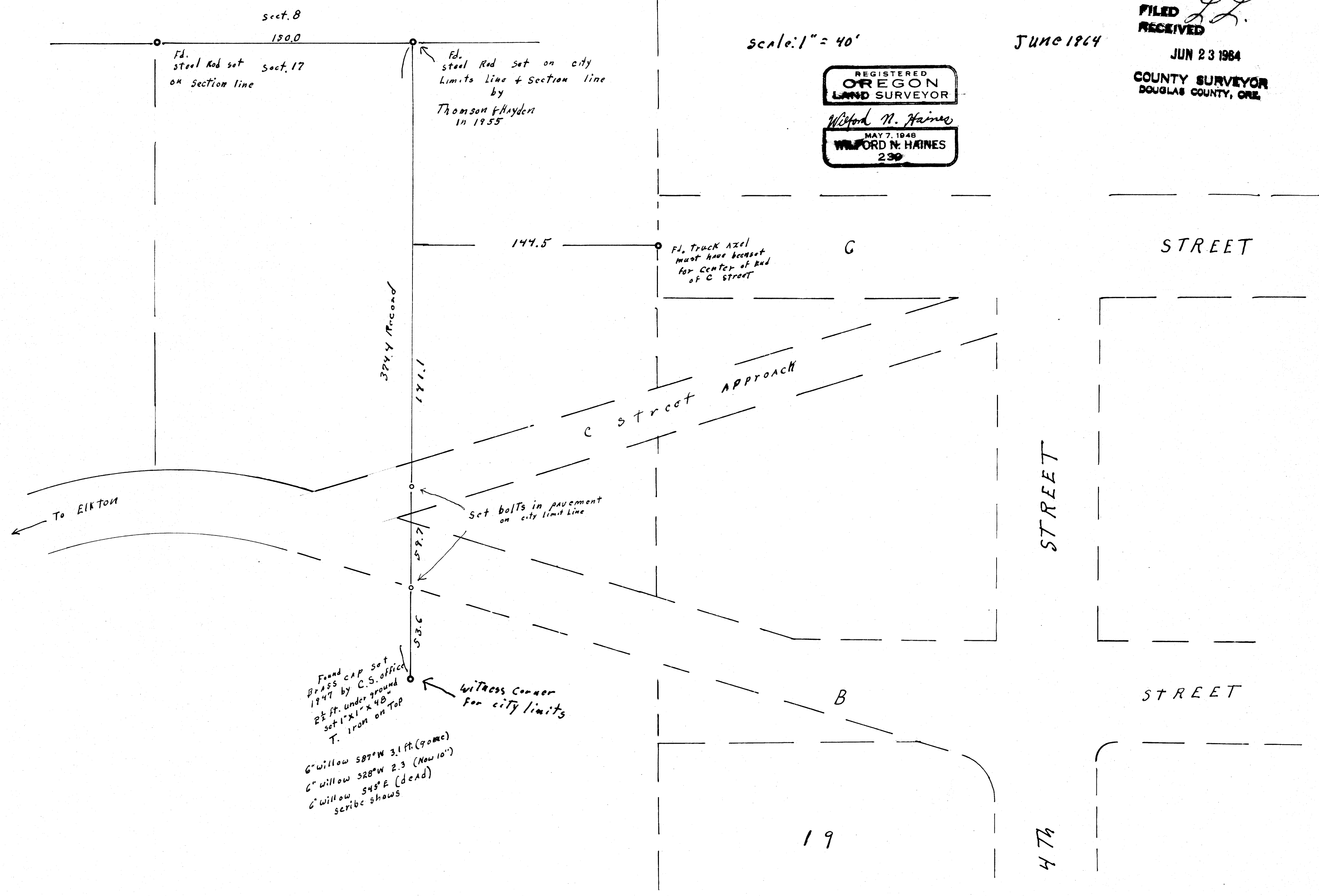
JUNE 1964

FILED *L.L.*
RECEIVED

JUN 23 1964

COUNTY SURVEYOR
DOUGLAS COUNTY, ORE.

REGISTERED
OREGON
LAND SURVEYOR
Wilford N. Haines
MAY 7, 1948
WILFORD N. HAINES
239



MAP FILE M28-21

M 28-21

T22-5 NE NW Sect 17