

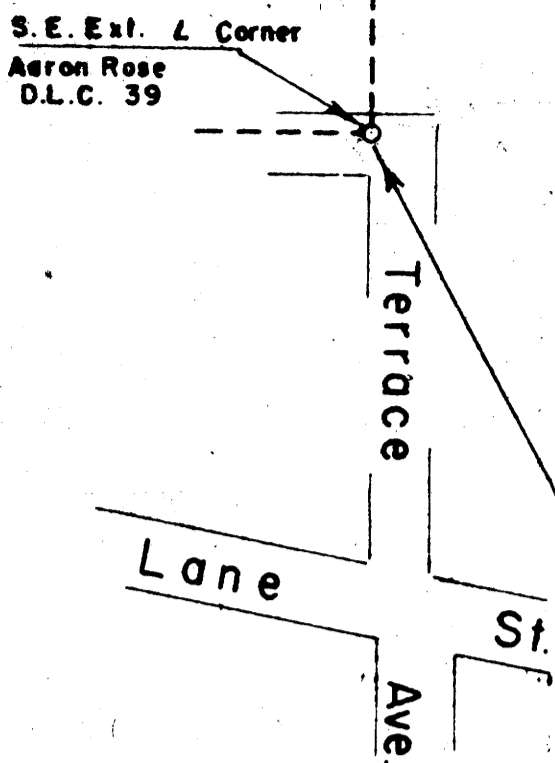
COUNTY SURVEYORS FILE OF
DO NOT REMOVE FROM OFFICE

PLAT OF LOTS 1 to 5 INC. TERRACE PARK ADD'N

Roseburg, Oregon.

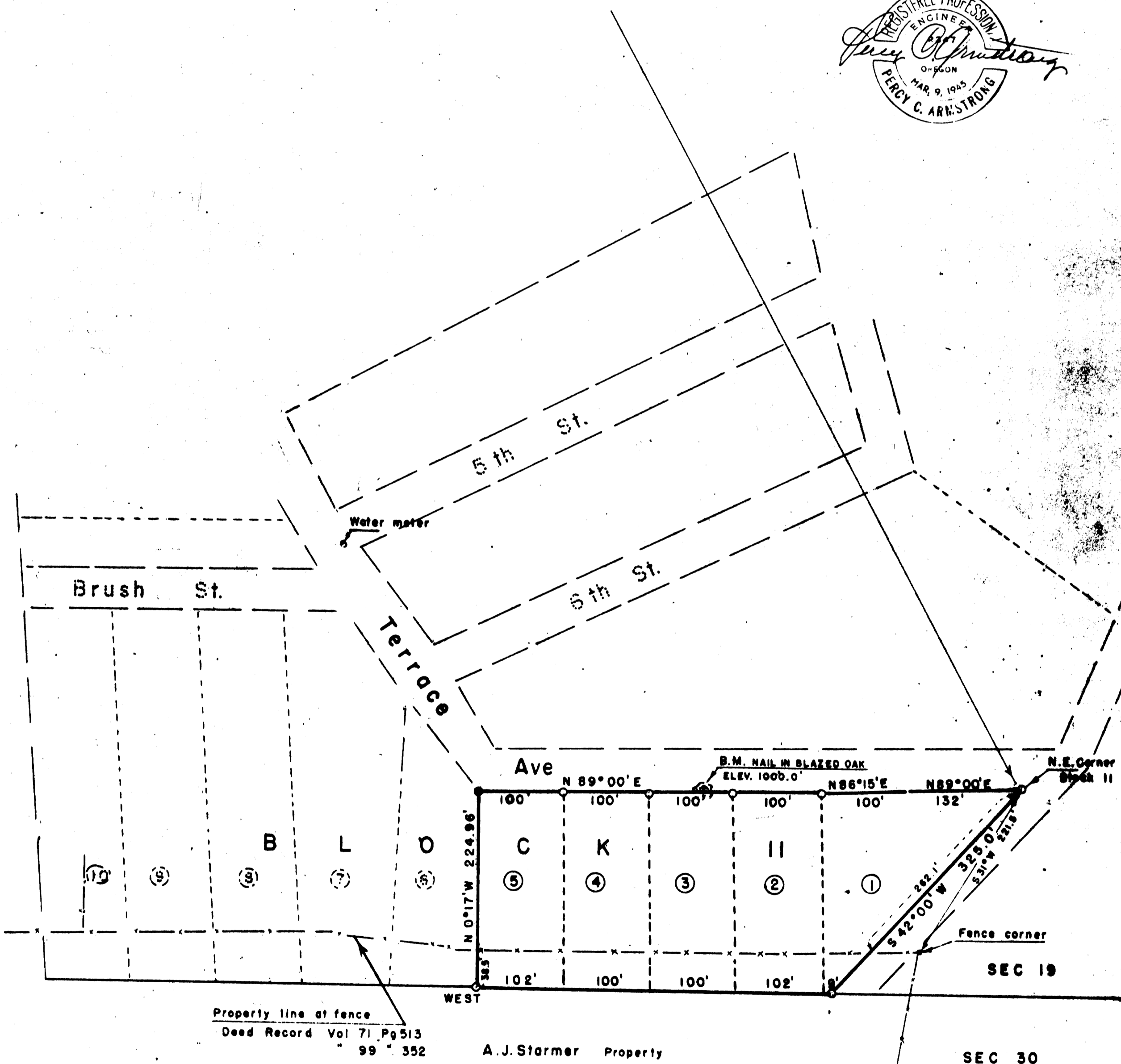
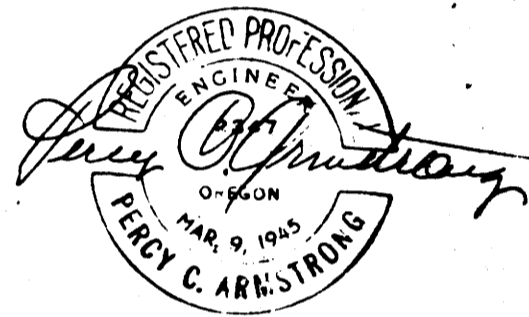
September 1952

Scale 1" = 100'



S 28°36'E
2043.98'

Ø = 3/4" x 24" iron rods



Property line of fence
Deed Record Vol 71 Pg 513
" 99 " 352

A. J. Starnes Property

SEC 30

FILED
RECEIVED

JUN 17 1964

COUNTY SURVEYOR
DOUGLAS COUNTY, ORE.

NOTE :-
THIS TRACING MADE BY "PHOTO-LINE" PROCESS FROM
A PRINT OF AN UN-FILED SURVEY, SAID PRINT BEING
TENDERED THIS OFFICE FOR COPYING PURPOSE, BY
OREGON WATER CORR. I HEREBY CERTIFY THIS TRACING
TO BE AN EXACT COPY OF SAID PRINT.

6/17/64

Fred W. Darby
Co. Surveyor