

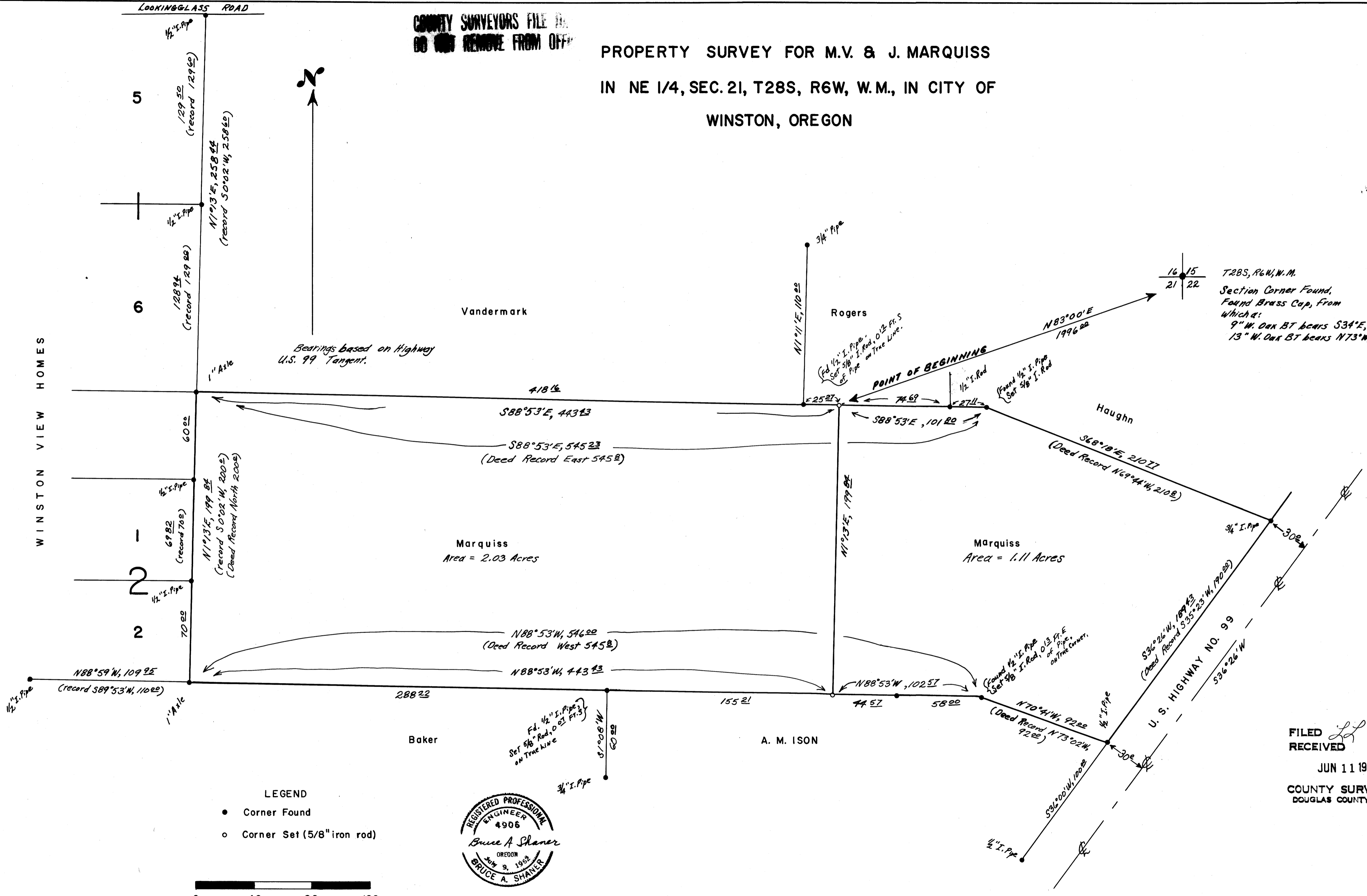
COUNTY SURVEYORS FILE NO. DO NOT REMOVE FROM OFFICE

PROPERTY SURVEY FOR M.V. & J. MARQUISS
IN NE 1/4, SEC. 21, T28S, R6W, W.M., IN CITY OF
WINSTON, OREGON

MAP FILE M.28. & 13

WINSTON VIEW HOMES

Bearings based on Highway U.S. 99 Tangent.

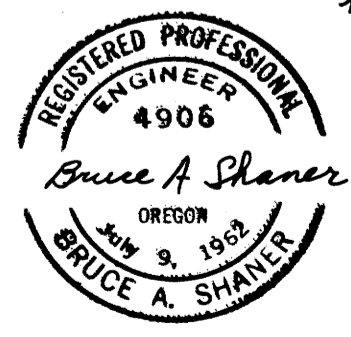


T28S, R6W, W.M.
Section Corner Found,
Found Brass Cap, from
which:
9" W. Oak BT bears S34°E, 56.2 ft.
13" W. Oak BT bears N73°W, 37.2 ft.

LEGEND

- Corner Found
- Corner Set (5/8" iron rod)

0 40 80 120
Scale: 1 inch = 40 ft.



Surveyed June, 1964

FILED RECEIVED
JUN 11 1964
COUNTY SURVEYOR
DOUGLAS COUNTY, ORE.

M 28-13