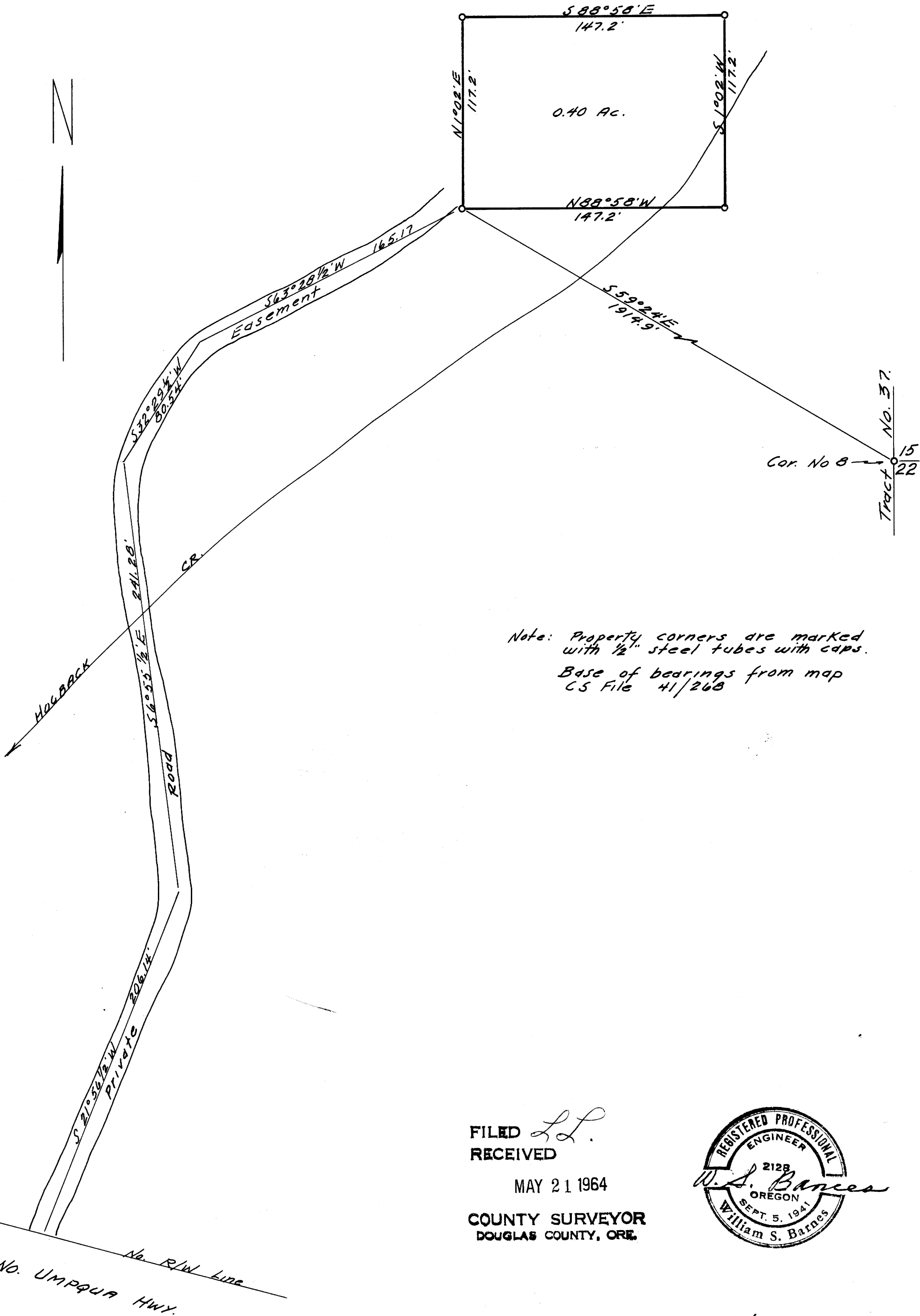


COUNTY SURVEYORS FILE DATA  
DO NOT REMOVE FROM OFFICE

MAP OF SURVEY FOR DEED DESCRIPTION  
SEC. 16, T26S, R2W, W.M.  
DOUGLAS COUNTY, OREGON.

SURVEYED FOR - MAX LOCKWOOD  
SURVEYED BY - W.S. BARNES

MAY 1964  
SCALE - 1" = 50'



Note: Property corners are marked  
with 1/2" steel tubes with caps.  
Base of bearings from map  
CS File 41/268

FILED *L.L.*  
RECEIVED

MAY 21 1964

COUNTY SURVEYOR  
DOUGLAS COUNTY, ORE.

