

COUNTY SURVEYOR'S OFFICE
DO NOT REMOVE FROM OFFICE

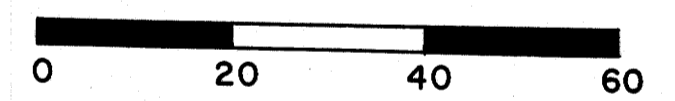
PROPERTY SURVEY FOR THE FIRST NATIONAL BANK OF ROSEBURG

IN THE NWNE, SEC. 21, T28S, R6W, WINSTON, OREGON

FILED *LL*
RECEIVED
MAY 14 1964
COUNTY SURVEYOR
DOUGLAS COUNTY, ORE.

LEGEND

- Corner Found
- Corner Set (5/8" x 36" Iron Rod)



Scale: 1 inch = 20 feet

REGISTERED
OREGON
LAND SURVEYOR

Bruce A. Shaner

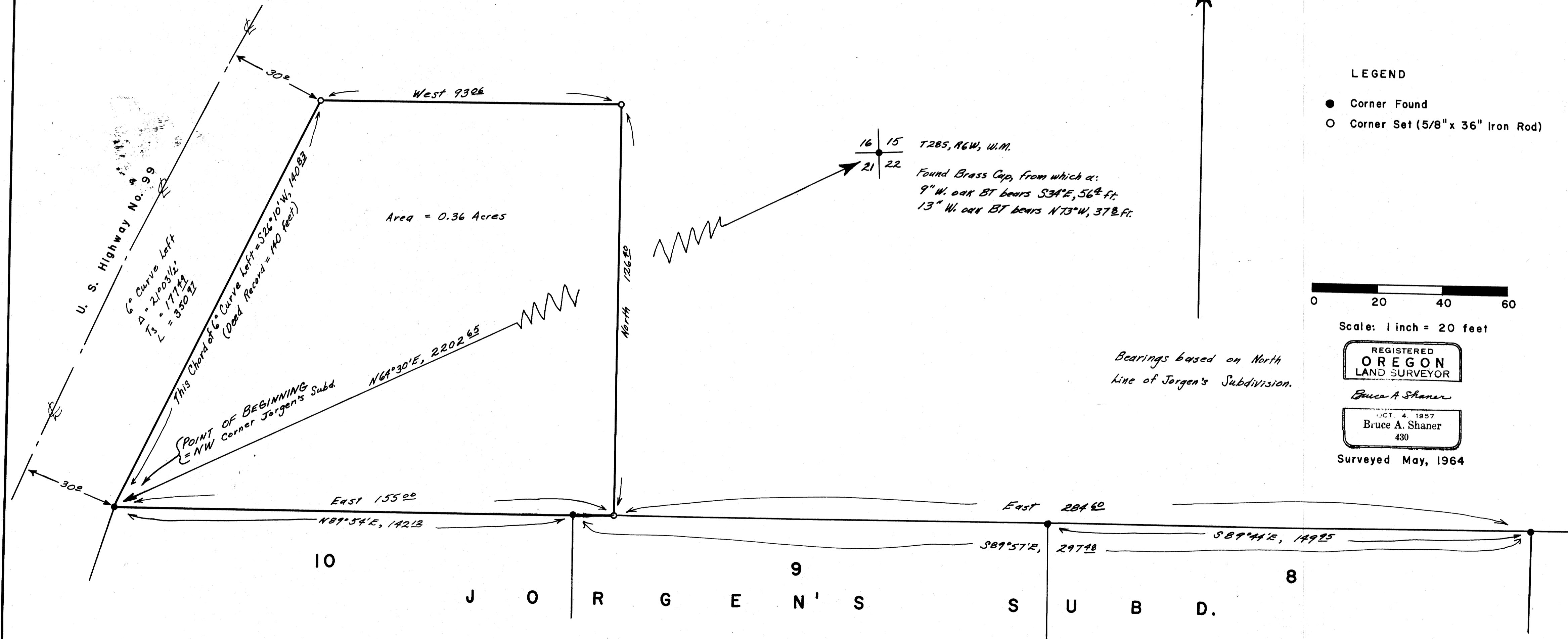
JULY 4, 1957
Bruce A. Shaner
430

Surveyed May, 1964

Bearings based on North
Line of Jorgen's Subdivision.

16 | 15 T28S, R6W, W.M.
21 | 22
Found Brass Cap, from which a:
9" W. oak BT bears S34°E, 56 1/2 ft.
13" W. oak BT bears N73°W, 37 1/2 ft.

Area = 0.36 Acres



M 27-80

MAP FILE M. 27. P. 80