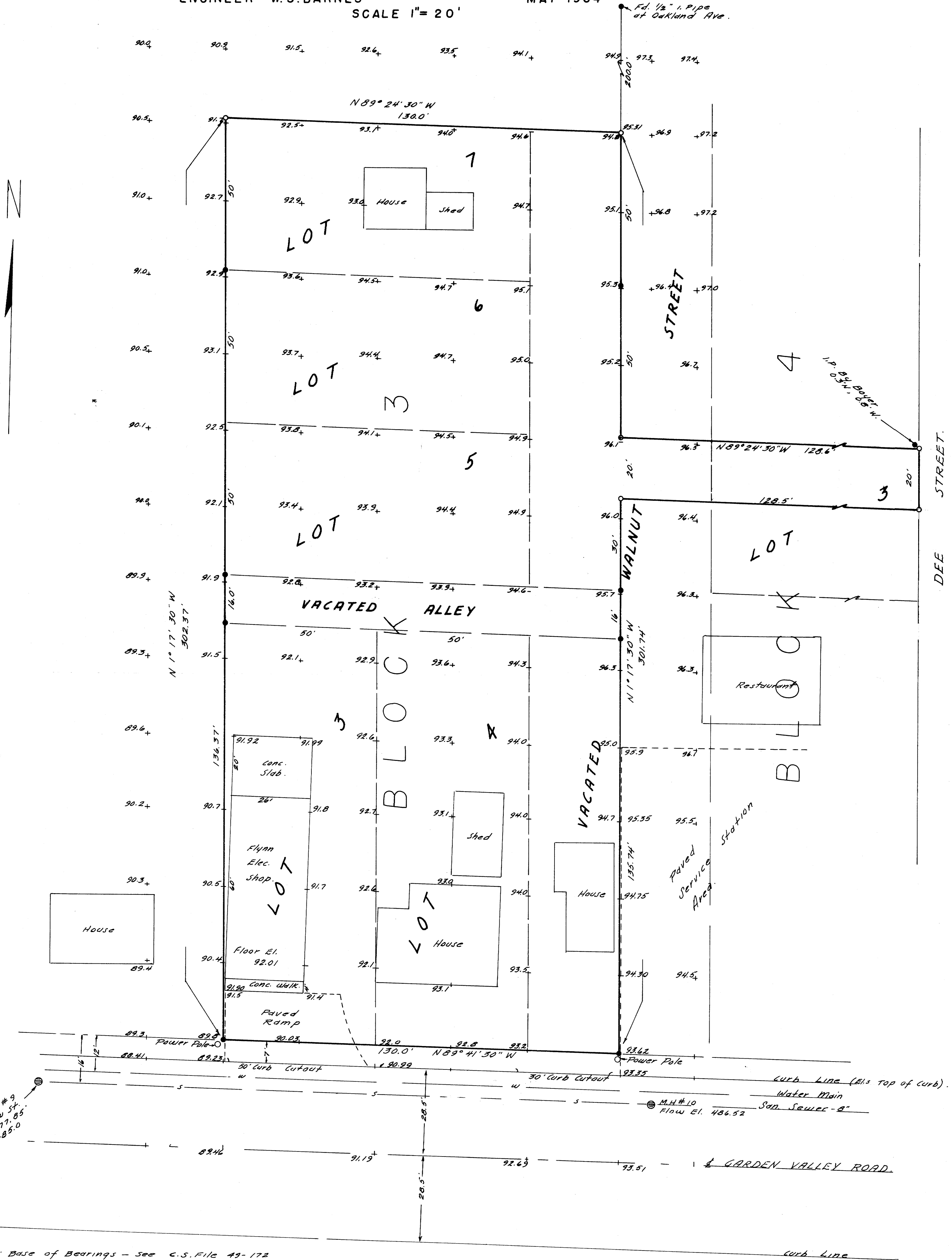


COUNTY SURVEYORS FILE DATA
DO NOT REMOVE FROM OFFICE

MAP OF SURVEY TO ESTABLISH PROPERTY CORNERS AND 25 FT. GRID ELEVATIONS IN PORTIONS OF BLOCKS 3 AND 4, BAHRKE'S SUBDIVISION OF FRUITVALE, T. 27 S., R. 6 W., W.M., DOUGLAS COUNTY, OREGON.

SURVEYED FOR - FIRST NAT. BANK OF ROSEBURG
ENGINEER - W.S. BARNES
MAY 1964
SCALE 1" = 20'



At Willow St. #9
Flow El. 477.85
Rim El. 485.0

Note: Base of Bearings - See C.S. File 49-172
M-15-34.
● Denotes 3/4" I. Rods Found
○ Denotes 3/4" I. Rods Set.

FILED
RECEIVED
MAY 6 1964
COUNTY SURVEYOR
DOUGLAS COUNTY, ORE.

