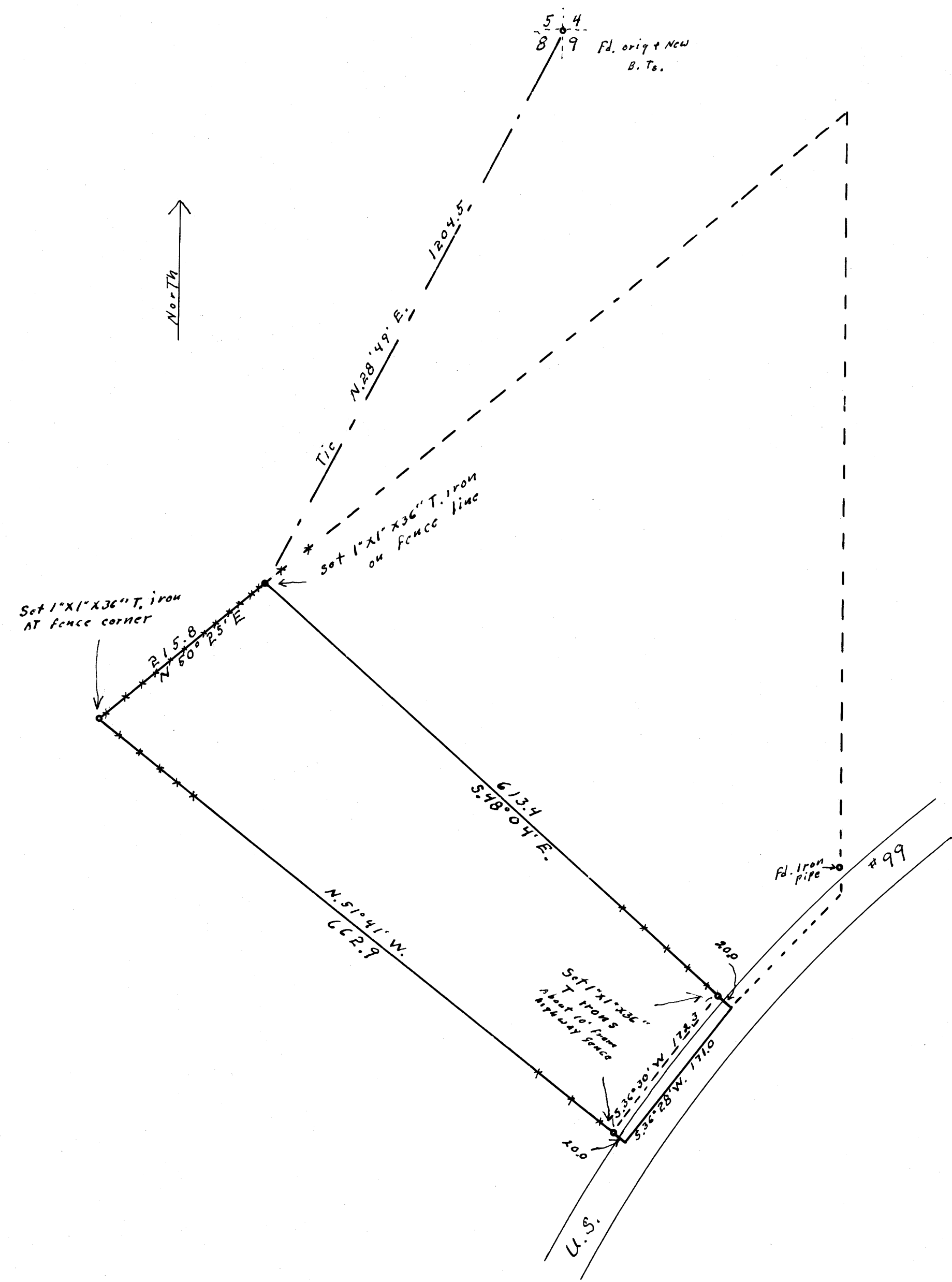


FILE M 27-70



COUNTY SURVEYORS FILE  
REMOVE FROM FILE

# SURVEY FOR DEED DESCRIPTION SECT 8, T.22S., R.5W. W.M.

Scale: 1" = 100' April 1964

for  
ARLO THOMAS DRAIN, OREG.

REGISTERED  
OREGON  
LAND SURVEYOR

*Wilford N. Haines*

MAY 7, 1948  
WILFORD N. HAINES  
239

FILED *LL*  
RECEIVED

APR 23 1964

COUNTY SURVEYOR  
DOUGLAS COUNTY, ORE.

M 27-70