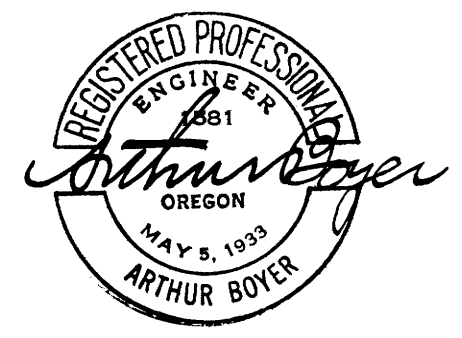
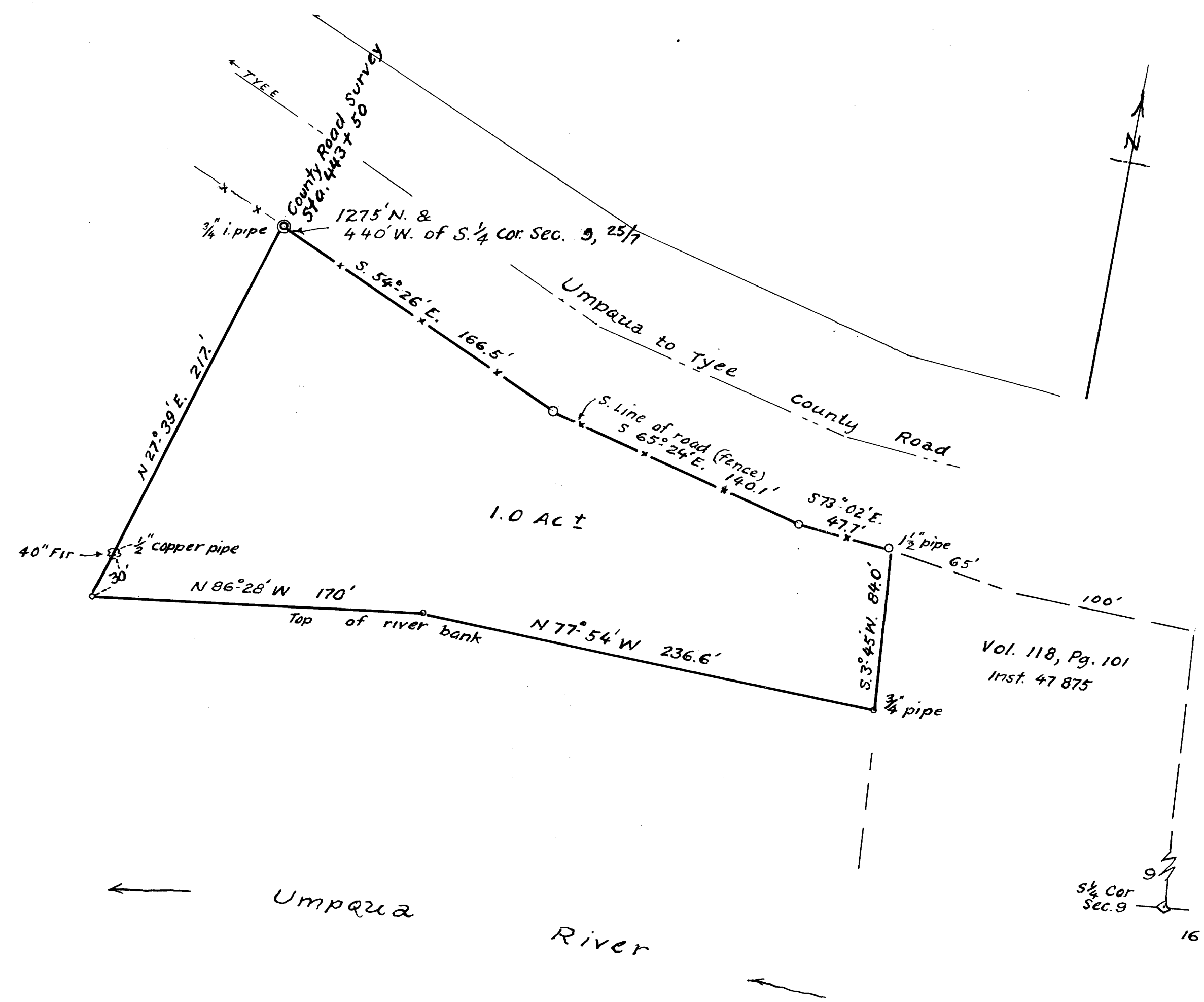


FILED L.L.
RECEIVED

DEC 20 1963

COUNTY SURVEYOR
DOUGLAS COUNTY, ORE.

MAP FILE M 27-7-1



SEE CONNECTION
SURVEY M 25-15

THENNES TO COOK
PORTION OF SEC. 9, T.25S; R.7W; W.M.
DOUGLAS COUNTY, ORE.
DEC. 1963
1" = 50'

COUNTY SURVEYORS FILE DATA
DO NOT REMOVE FROM OFFICE

M 27-7