

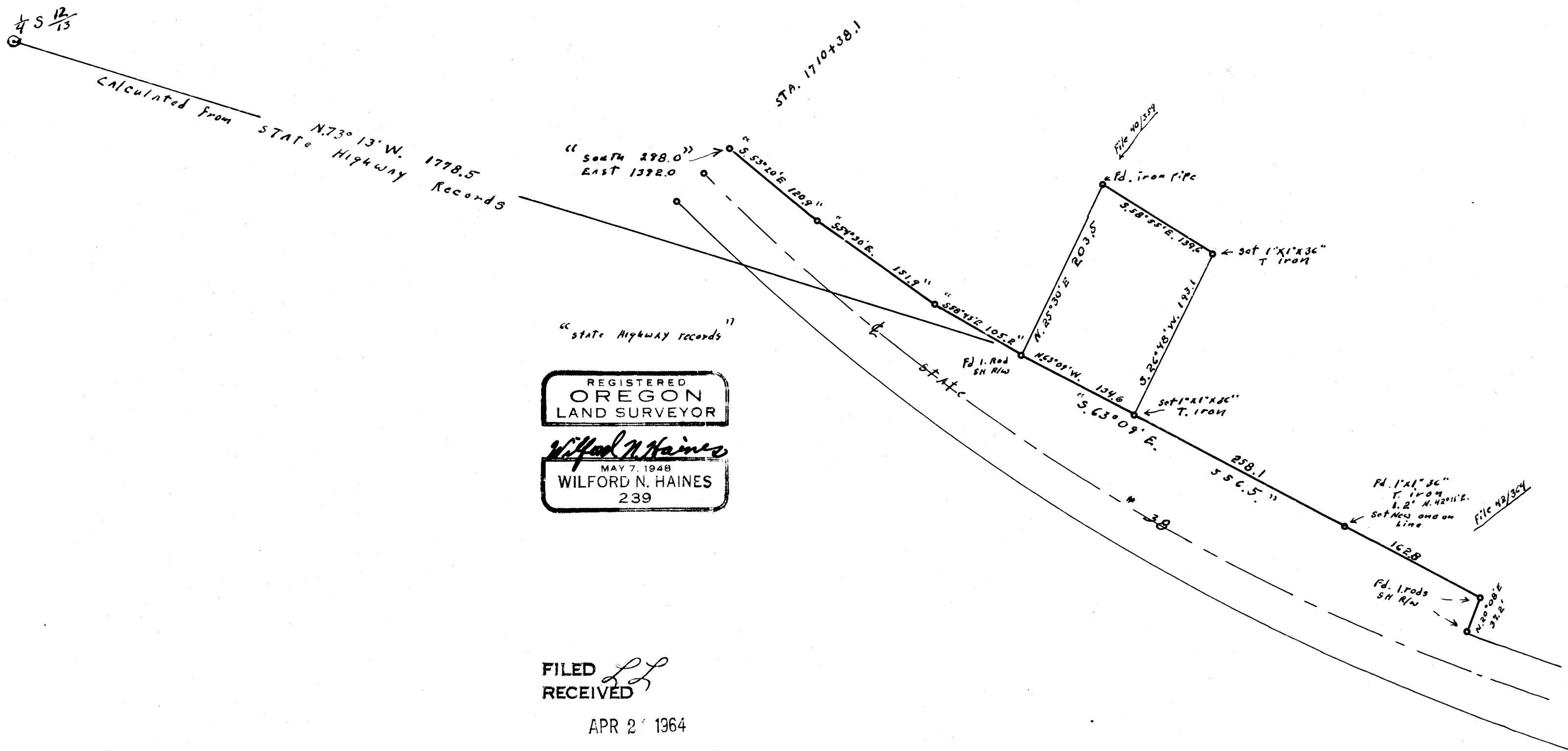
RECORDED FILE NO.
INDEXED FILE NO.

SURVEY FOR DEED DESCRIPTION SECT. 13, T22S. R6W W.M.

Scale 1"=100

APRIL 1964

C.S. FILE 51/286
MAP FILE M 27-69



REGISTERED
OREGON
LAND SURVEYOR

Wilford N. Haines
MAY 7, 1948
WILFORD N. HAINES
239

FILED *LL*
RECEIVED

APR 21 1964

COUNTY SURVEYOR
DOUGLAS COUNTY, ORE.

1/10/64

C.S. FILE 51/286
MAP FILE M 27-69