

COUNTY SURVEYORS FILE DATA  
DO NOT REMOVE FROM OFFICE

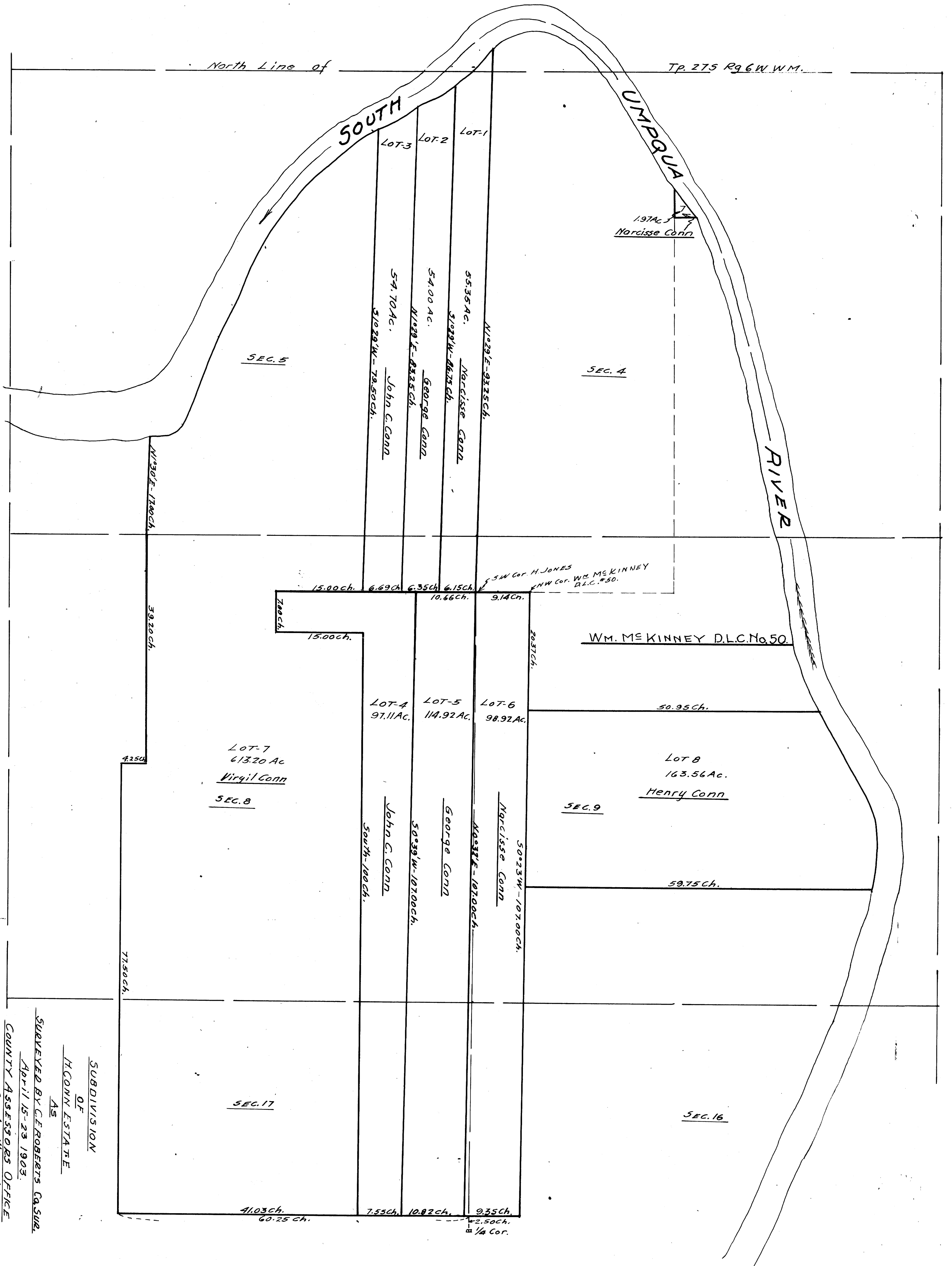
NOTE:

THIS TRANSPARENCY MADE FROM TRACING PREPARED BY COUNTY ASSESSOR, SOURCE DATA OF WHICH IS UNKNOWN. ONLY RECORD FOUND IN THIS OFFICE IS OLD BLUEPRINT IN CS FILE 49/33, OF UNKNOWN SOURCE. POSSIBLY SURVEY WAS PART OF SUIT IN CIRCUIT COURT, SEE C.C.J. 16/485 & C.C.J. 17/590.

Fred M. Dardy

3/31/64

FRED M. DARDY, Co. SURVEYOR.



SUBDIVISION  
OF  
H. CONN ESTATE  
AS  
SURVEYED BY C. ROBERTS CASLER  
APRIL 15-23 1903.  
COUNTY ASSESSORS OFFICE  
SCALE - 1" = 10 CH.  
SEE NOTE AT LEFT"