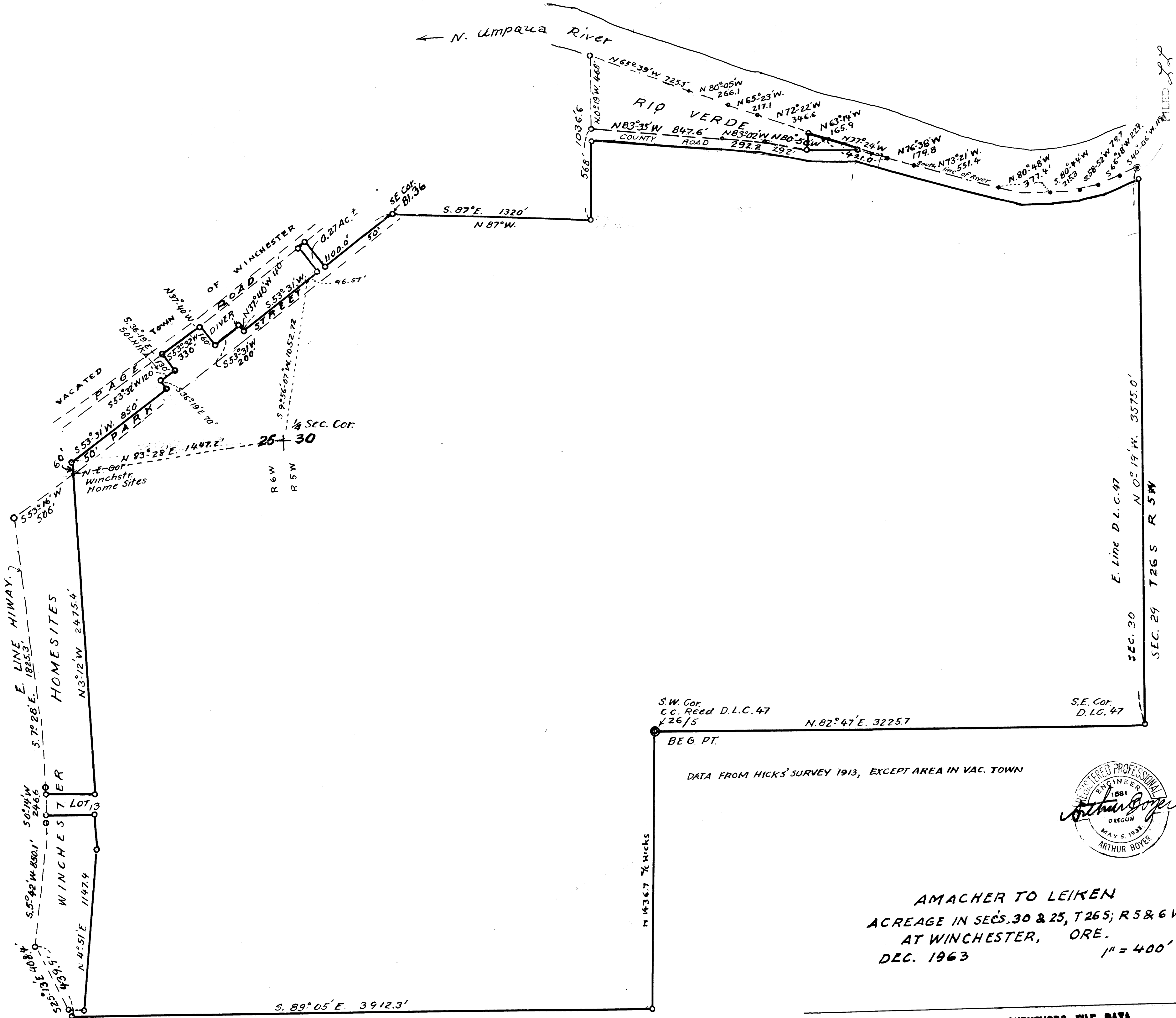


M 27-6



DEC 20 1963

COUNTY SURVEYOR DOUGLAS COUNTY, ORE.

MAP FILE M.217-6

FILED RECEIVED



S.W. Cor. C.C. Reed D.L.C. 47 126/5 N. 82° 47' E. 3225.7  
BEG. PT.

DATA FROM HICKS' SURVEY 1913, EXCEPT AREA IN VAC. TOWN



AMACHER TO LEIKEN  
ACREAGE IN SECS. 30 & 25, T26 S; R 5 & 6 W, WM.  
AT WINCHESTER, ORE.  
DEC. 1963 1" = 400'

COUNTY SURVEYORS FILE DATA  
DO NOT REMOVE FROM OFFICE