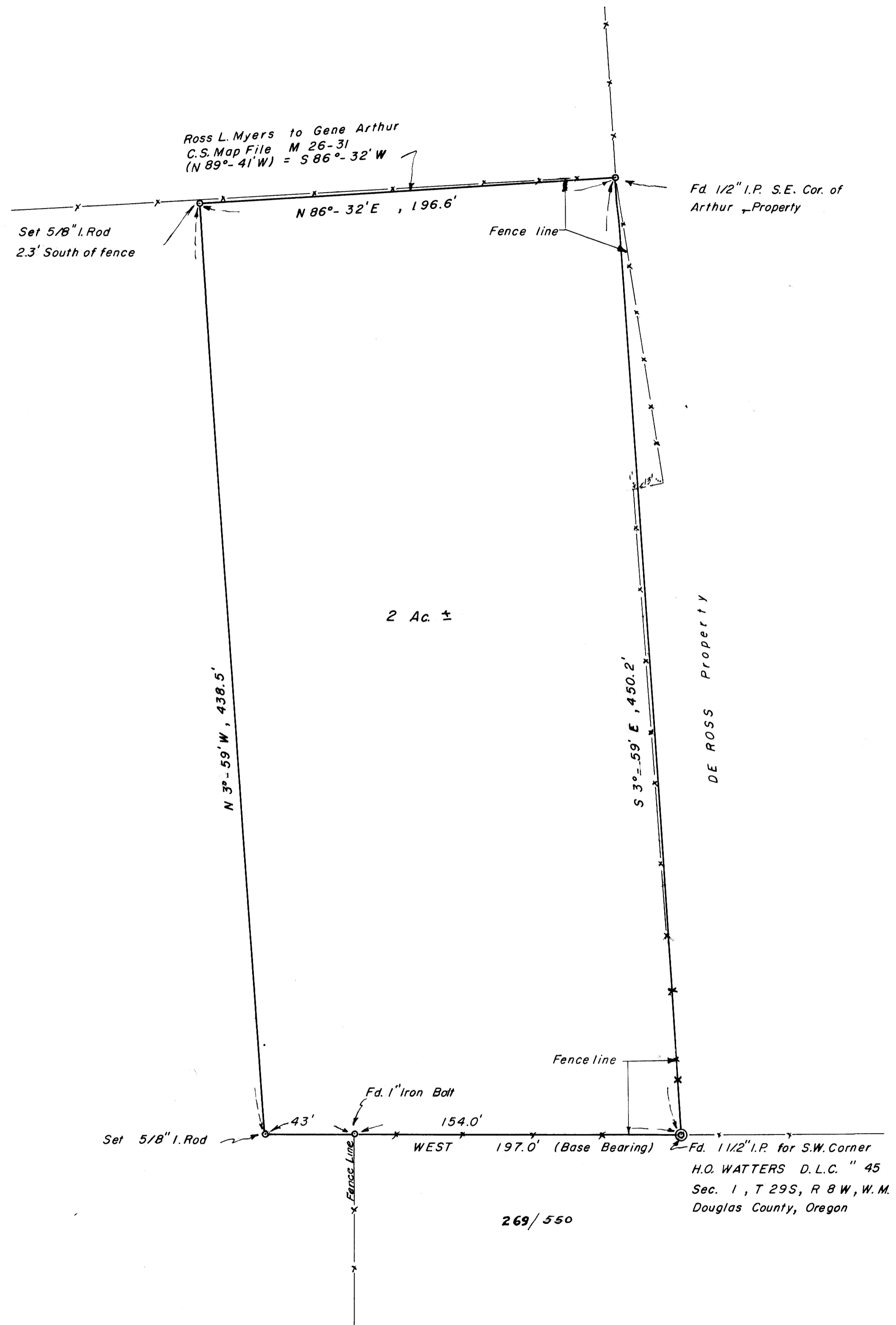


FILE M.27. r. 59.



Ross L. Myers to Gene Arthur  
 C.S. Map File M 26-31  
 (N 89°-41'W) = S 86°-32'W

Set 5/8" I. Rod  
 2.3' South of fence

N 86°-32'E, 196.6'

Fd. 1/2" I.P. S.E. Cor. of  
 Arthur Property

2 Ac. ±

N 3°-59'W, 438.5'

S 3°-59'E, 450.2'

DE ROSS Property

Set 5/8" I. Rod

Fd. 1" Iron Bolt

154.0'

WEST 197.0' (Base Bearing)

Fd. 1 1/2" I.P. for S.W. Corner  
 H.O. WATTERS D.L.C. " 45  
 Sec. 1, T 29S, R 8W, W.M.  
 Douglas County, Oregon

269/550

FILED *LL*  
 RECEIVED  
 MAR 27 1964  
 COUNTY SURVEYOR  
 DOUGLAS COUNTY, ORE.



COUNTY SURVEYORS FILE ONLY  
 DO NOT REMOVE FROM OFFICE

**RAY STEVENS**  
 FROM  
**A.L. JENNIE**  
 SEC. 1, T 29 S, R 8 W, W.M. DOUGLAS CO.  
 OREGON  
 Scale 1" = 40' Mar, 1964  
 A.B. H.N.

M.27-59