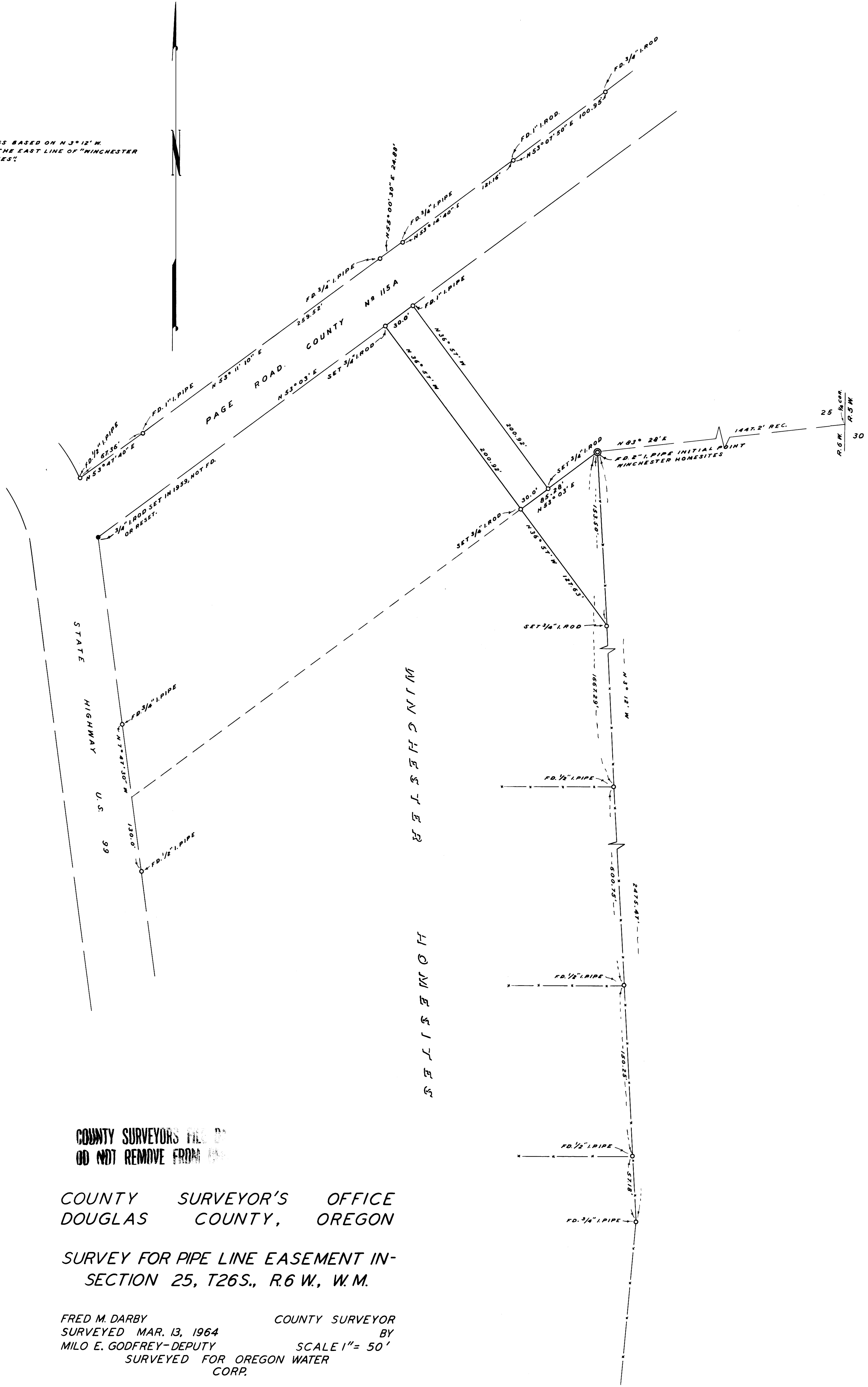


NOTE: BEARINGS BASED ON N 3° 12' W
ALONG THE EAST LINE OF "WINCHESTER
HOMESITES"



COUNTY SURVEYORS FILE NO.
DO NOT REMOVE FROM FILE

COUNTY SURVEYOR'S OFFICE
DOUGLAS COUNTY, OREGON

SURVEY FOR PIPE LINE EASEMENT IN-
SECTION 25, T26S., R.6 W., W.M.

FRED M. DARBY COUNTY SURVEYOR
SURVEYED MAR. 13, 1964 BY
MILO E. GODFREY-DEPUTY SCALE 1" = 50'
SURVEYED FOR OREGON WATER
CORP.

Milo E. Godfrey