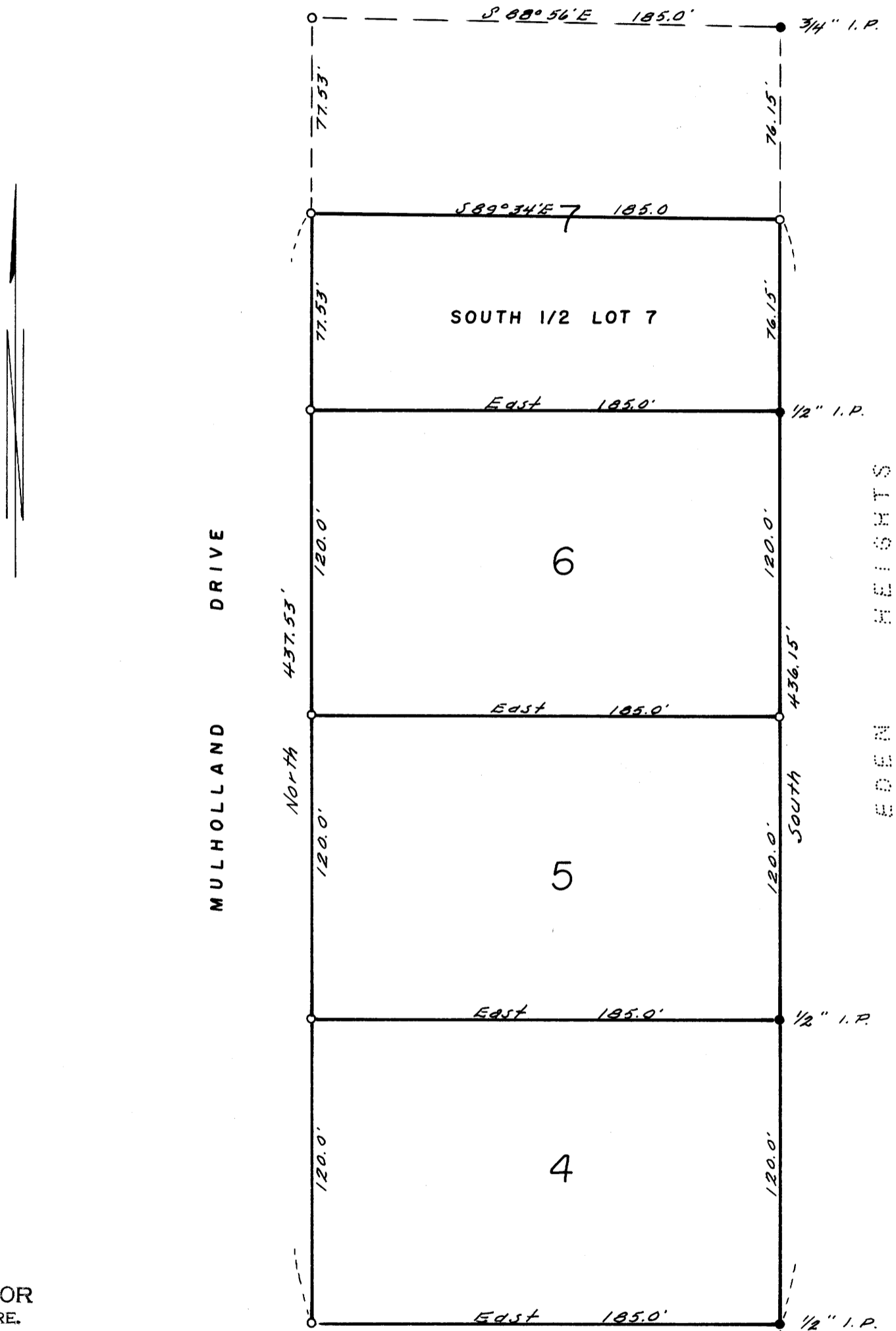


COUNTY SURVEYORS FILE
DO NOT REMOVE FROM OFFICE

MAP OF
SURVEY TO ESTABLISH PROPERTY CORNERS,
LOTS 4, 5, 6, & S 1/2 OF LOT 7, BLOCK 3,
MULHOLLAND MEADOWS,
ROSEBURG, OREGON

SURVEYED FOR - MRS. AGNES MULHOLLAND
SURVEYED BY - W. S. BARNES

MAR. 1964
SCALE 1" = 50'

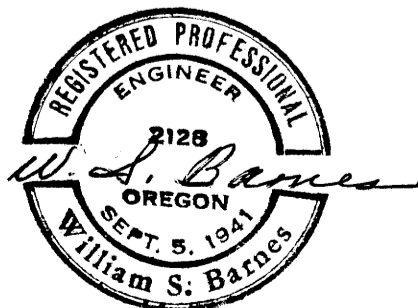


FILED *LL*
RECEIVED

MAR 6 1964

COUNTY SURVEYOR
DOUGLAS COUNTY, ORE.

o Denotes 5/8" iron rods set.
• " monuments found.
Base of bearings taken from
East line BIK 3, "MULHOLLAND MEADOWS."



1/2" I.P. S.E. COR LOT 3.
3/4" I.P. S.E. COR LOT 1.