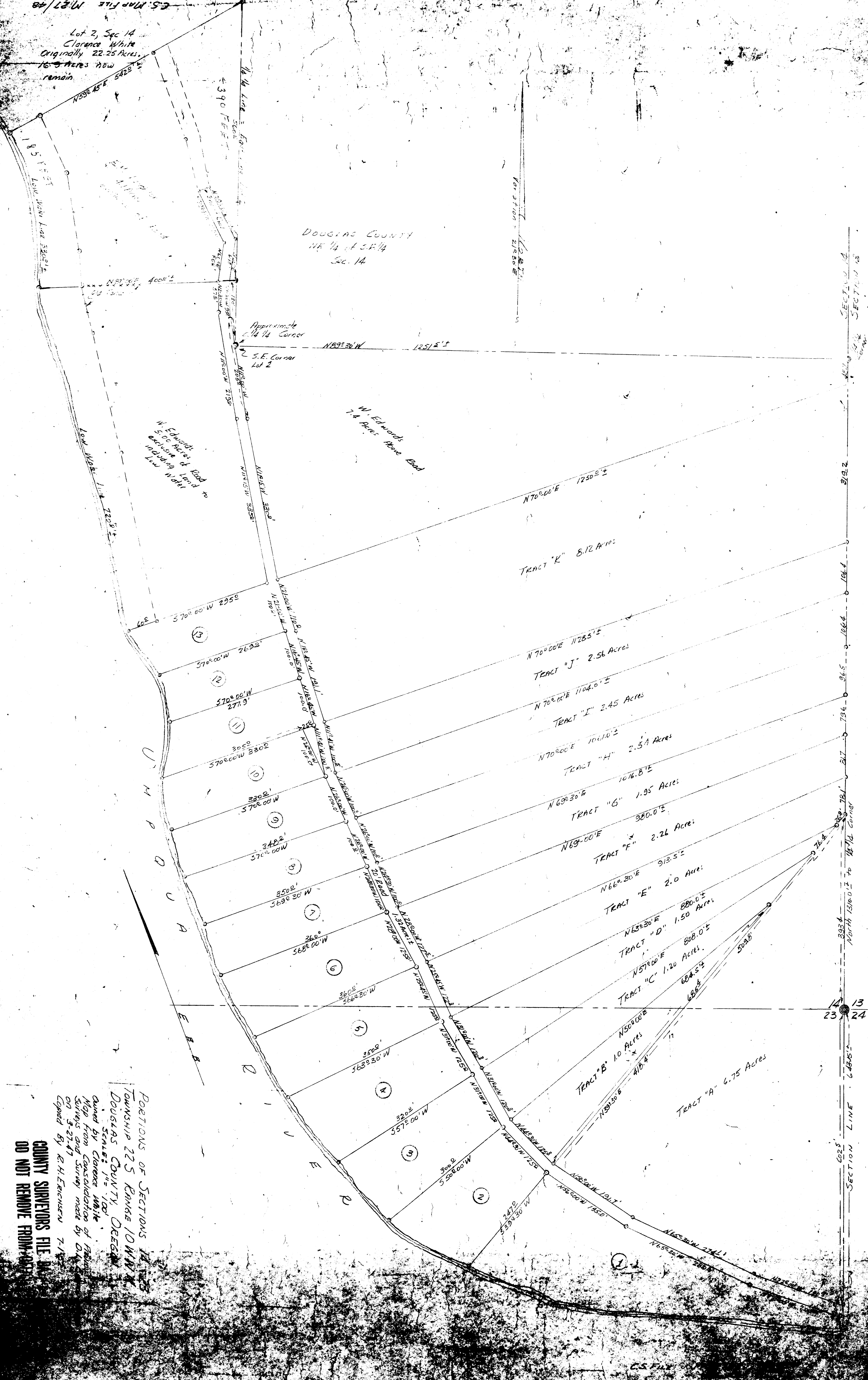


Lot 2, Sec 14
Clarence White
Originally 22.25 Acres.
16.5 Acres now
remain

DOUGLAS COUNTY
NE 1/4 of SE 1/4
Sec. 14



W. Edwards Road
5.00 Acres of Road
exclusive of Land
Low Water

W. Edwards Road
7.4 Acres Above Road

TRACT "K" 8.12 Acres

TRACT "J" 2.56 Acres

TRACT "I" 2.45 Acres

TRACT "H" 2.54 Acres

TRACT "G" 1.95 Acres

TRACT "F" 2.26 Acres

TRACT "E" 2.0 Acres

TRACT "D" 1.50 Acres

TRACT "C" 1.20 Acres

TRACT "B" 10 Acres

TRACT "A" 6.75 Acres

U
M
P
Q
U
A

E
B
B

SECTION 14
TOWNSHIP 22 S
RANGE 10 W

SECTION 14

SECTION 14

SECTION 14

SECTION 14

SECTION 14

SECTION 14

SECTION 14

SECTION 14

SECTION 14

SECTION 14

PORTIONS OF SECTIONS 14, 15,
TOWNSHIP 22 S RANGE 10 W W. 1/4
DOUGLAS COUNTY, OREGON
SCALE: 1" = 100'
Owned by Clarence White
Map from Consolidation of
Surveys and Survey made by D.H.
ON 5-27-47
Copied by R.H. EICHSEN 7-1-52

COUNTY SURVEYORS FILE
DO NOT REMOVE FROM FILE