

FILED *L.L.*
RECEIVED

FEB 23 1964

COUNTY SURVEYOR
DOUGLAS COUNTY, ORE.

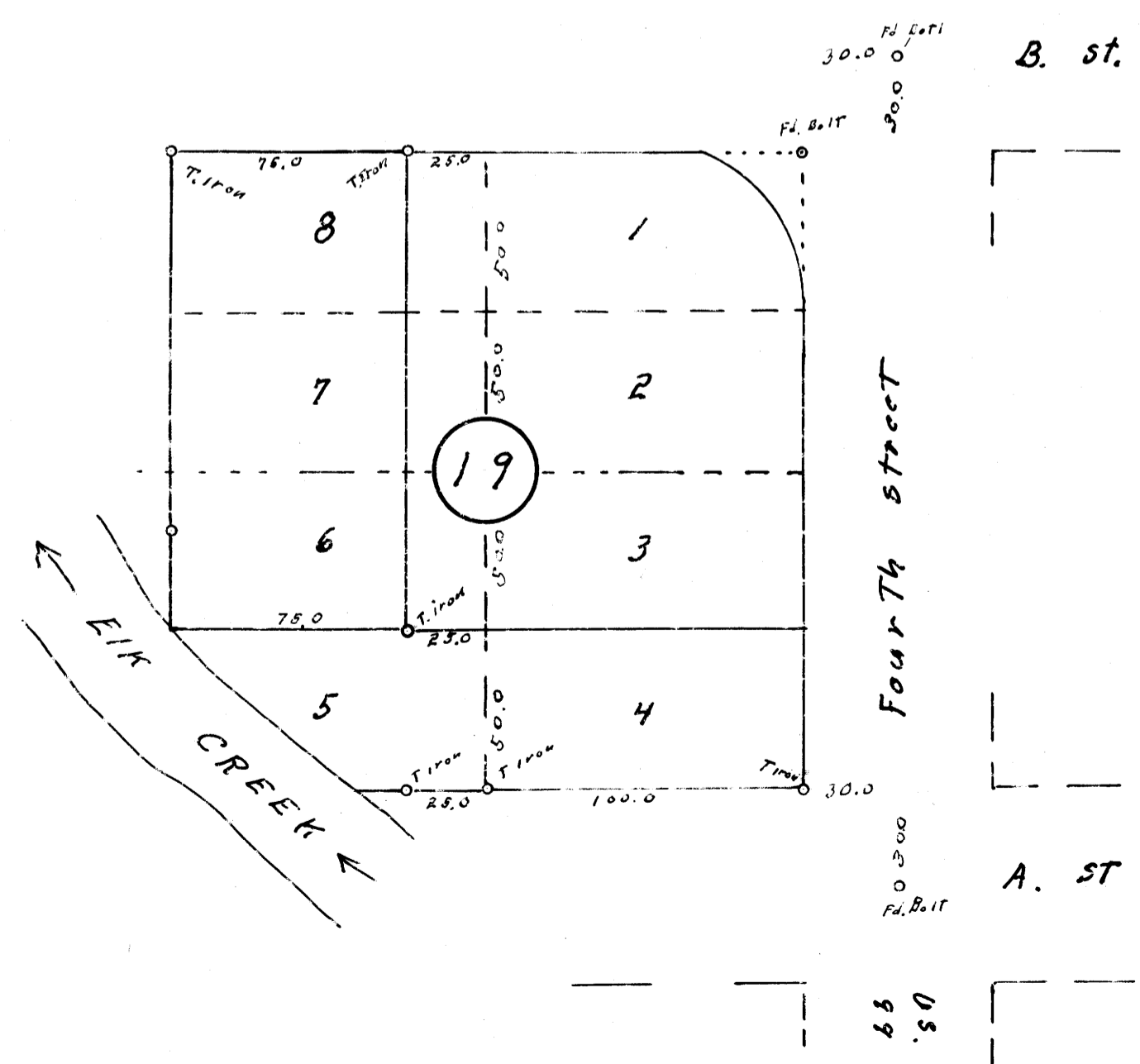
COUNTY SURVEYORS WILL NOT
DO NOT REMOVE FROM OFFICE

BLOCK 19 PLAT OF DRAIN

Survey for lease agreement
scale 1" = 50'

For
Unitri oil Co. Drain ore.

REGISTERED
OREGON
LAND SURVEYOR
Wilford N. Haines
MAY 7 1948
WILFORD N. HAINES
239



M 27-43

MAP FILE M 27-43

T22-5 NE NW SEC. 17