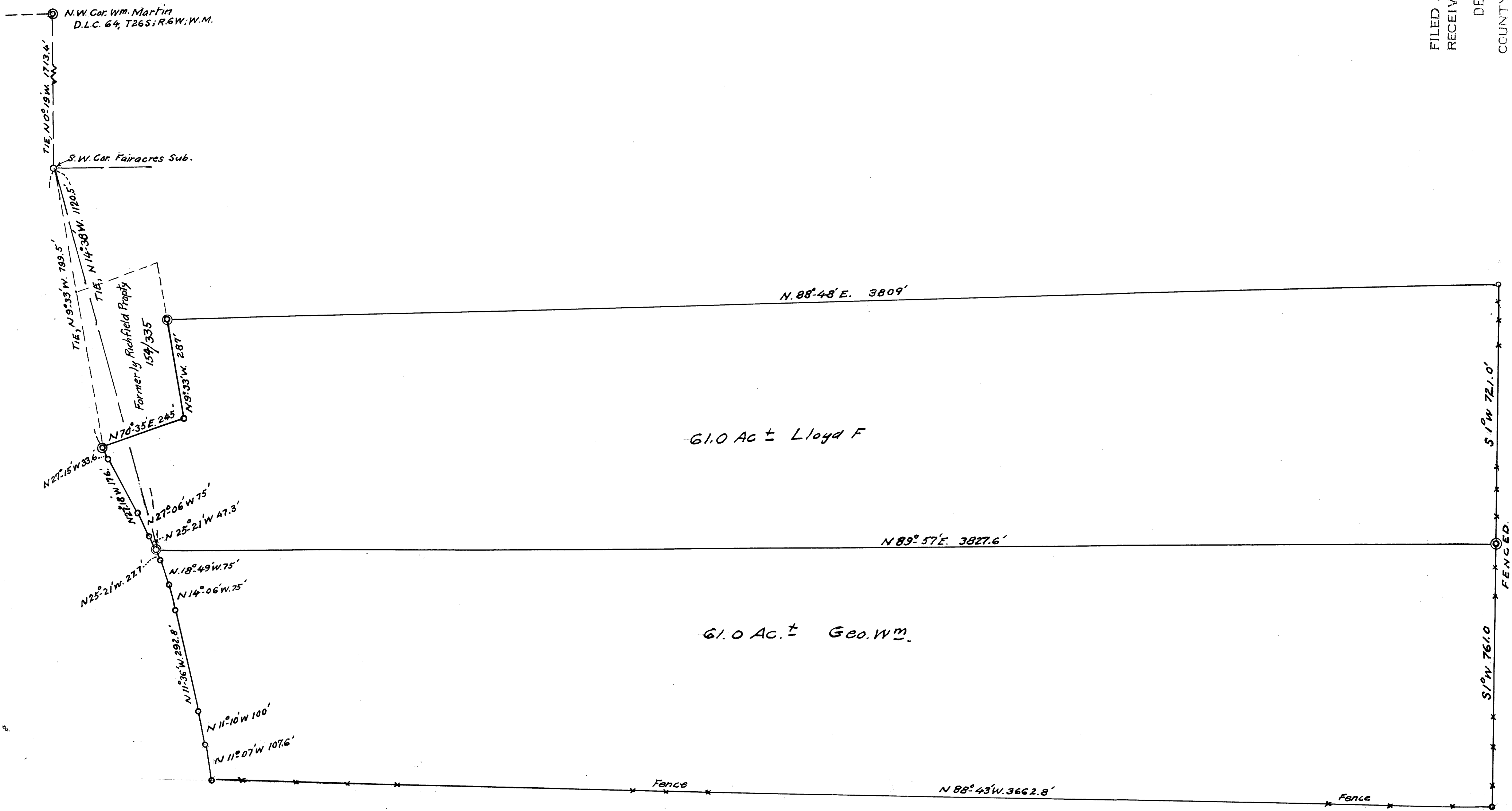


FILED
RECEIVED

DEC 20 1963

COUNTY SURVEYOR OF
DOUGLAS COUNTY, ORE.



W.G. GILLAM RANCH, WINCHESTER, ORE.
 S. 122 AC ± IN SECS 36 & 31,
 T. 26 S; RGS. 5 & 6 W; W.M.,
 DOUGLAS COUNTY, ORE.
 MAY, 1961 *AB.* 1" = 200'

COUNTY SURVEYORS FILE DATA
 DO NOT REMOVE FROM OFFICE