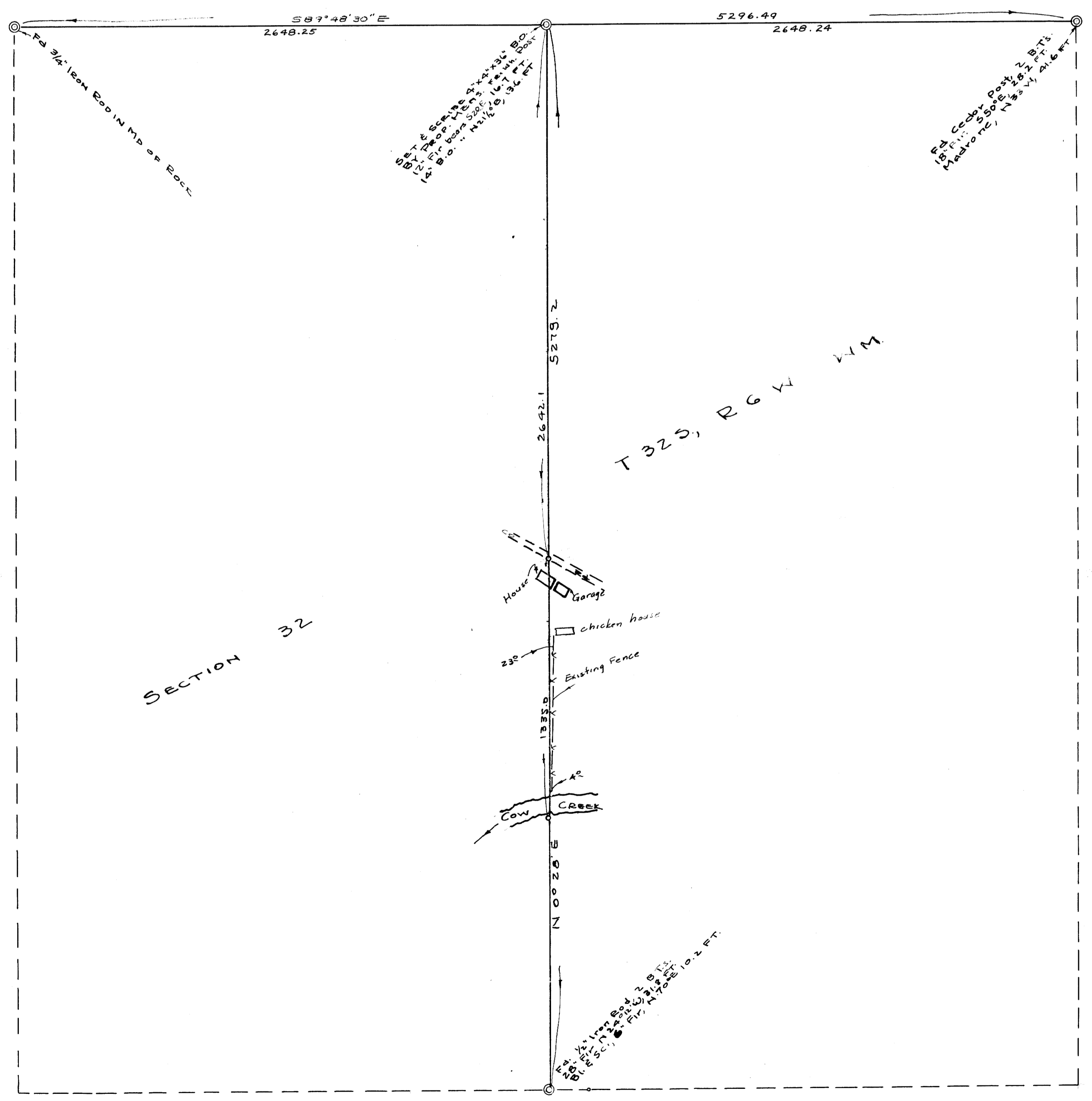


COUNTY SURVEYORS FILE NO. 41
DO NOT REMOVE FROM GRANT

SURVEY TO ESTABLISH NORTH-SOUTH CENTER-LINE
SECTION 32, TWP 32 SOUTH, RGE. 6 WEST, W.M.
DOUGLAS COUNTY, OREGON
FOR
CLAUDE W. DRAKE, JR.

GRANT AND EVANS, ENGINEERS ROSEBURG, OREGON
SURVEYED 9/2/53 - 10/10/53 SCALE 1" = 400'

C. W. Drake



SECTION 32

T 32 S, R 6 W W.M.

FILED
RECEIVED

JAN 5, 1954

COUNTY SURVEYOR
DOUGLAS COUNTY, ORE.