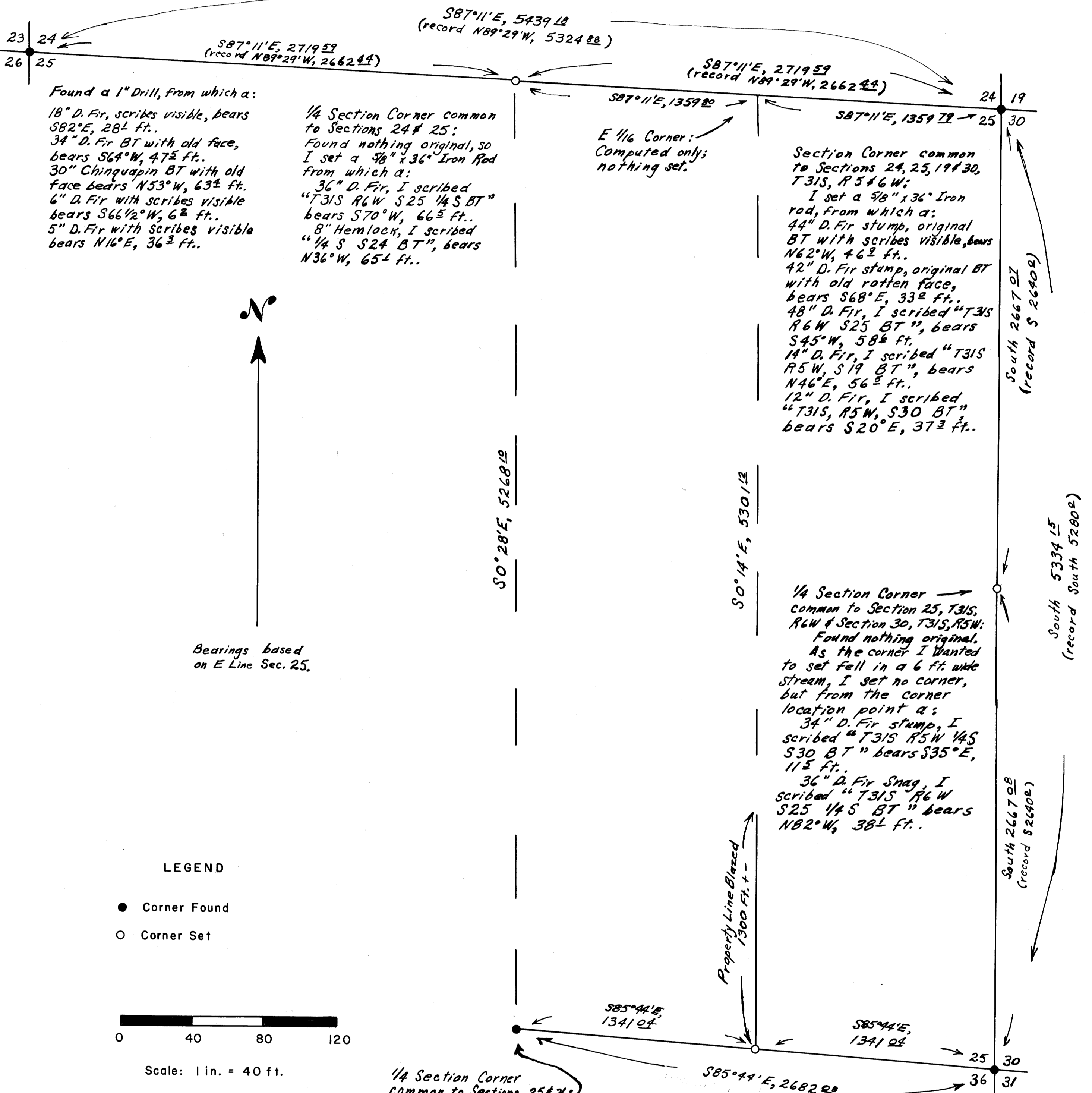


PROPERTY SURVEYORS FILE NO. 10000000000000000000

PROPERTY LINE SURVEY FOR BATE LUMBER CO. IN SECTION 25, T31S, R6W, W.M.



Found a 1" Drill, from which a: 18" D. Fir, scribes visible, bears S82°E, 28 1/2 ft. 34" D. Fir BT with old face, bears S64°W, 47 1/2 ft. 30" Chinquapin BT with old face bears N53°W, 63 1/2 ft. 6" D. Fir with scribes visible bears S66 1/2°W, 6 1/2 ft. 5" D. Fir with scribes visible bears N16°E, 36 1/2 ft.

1/4 Section Corner common to Sections 24 & 25: Found nothing original, so I set a 5/8" x 3/6" Iron Rod from which a: 36" D. Fir, I scribed "T31S R6W S25 1/4 S BT" bears S70°W, 66 1/2 ft. 8" Hemlock, I scribed "1/4 S S24 BT", bears N36°W, 65 1/2 ft.

E 1/16 Corner: Computed only; nothing set.

Section Corner common to Sections 24, 25, 19 & 30, T31S, R5 & 6 W: I set a 5/8" x 3/6" Iron rod, from which a: 44" D. Fir stump, original BT with scribes visible, bears N62°W, 46 1/2 ft. 42" D. Fir stump, original BT with old rotten face, bears S68°E, 33 1/2 ft. 48" D. Fir, I scribed "T31S R6W S25 BT", bears S45°W, 58 1/2 ft. 14" D. Fir, I scribed "T31S R5W, S19 BT", bears N46°E, 56 1/2 ft. 12" D. Fir, I scribed "T31S, R5W, S30 BT", bears S20°E, 37 1/2 ft.

1/4 Section Corner common to Section 25, T31S, R6W & Section 30, T31S, R5W: Found nothing original. As the corner I wanted to set fell in a 6 ft wide stream, I set no corner, but from the corner location point a: 34" D. Fir stump, I scribed "T31S R5W 1/4 S S30 BT" bears S35°E, 11 1/2 ft. 36" D. Fir Snag, I scribed "T31S R6W S25 1/4 S BT" bears N82°W, 38 1/2 ft.

1/4 Section Corner common to Sections 25 & 36: Found 1" Steel Pipe, from which a: 10" Yew BT with scribes visible bears S77°E, 38 1/2 ft. 10" Maple BT with scribes visible bears S78°W, 17 1/2 ft. (Above corner had been proportioned in & set by Wenderoth.)

E 1/16 Corner: I set a 5/8" x 3/6" Iron Rod, from which a: 38" D. Fir, I scribed "E 1/16 S25 BT" bears N12°W, 35 1/2 ft. 14" I. Cedar, I scribed "E 1/16 S36 BT" bears S42°W, 4 1/2 ft.

Section Corner common to Sections 25, 36, 30 & 31, T31S, R5 & 6 W, W.M.: Found 3/4" Iron Pipe, from which a: Original BT stump with scribes "S25" visible bears N38°W, 10 1/2 ft. (Note: following BT's apparently marked by G. Wenderoth.) 42" D. Fir, with scribes visible, bears N86°W, 26 1/2 ft. 18" Yew BT, scribes visible, an original BT, bears N31°E, 42 1/2 ft. 38" D. Fir BT with scribes visible bears S22°W, 63 1/2 ft.

LEGEND

- Corner Found
- Corner Set



Scale: 1 in. = 40 ft.



Surveyed Feb., 1964

FILED RECEIVED

FEB 17 1964

COUNTY SURVEYOR DOUGLAS COUNTY, ORE.